

# T8

## 12.5T8/COR/48-850/FF18/G/DIM 25/1

Our TLEDs are available in InstantFit (Type A / Type C) or MainsFit (Ballast bypass / Type B) versions. The InstantFit lamps work on a broad variety of ballasts and LED drivers. Only InstantFit has over 15,000 lamp & ballast combinations delivering even light output, energy savings and a long lifetime. Our MainsFit products feature a double-ended design, simplifying installation while a proprietary safety circuit minimizes a shock risk. Lamp sizes range from 2-foot to 8-foot and U-bend with a variety of lumen outputs.

### Product data

General information	
Cap-Base	G13 [ Medium Bi-Pin Fluorescent]
EU RoHS compliant	Yes
Nominal Lifetime (Nom)	50000 h
Switching Cycle	50000X
Technical Type	12.5;13-32W
Light technical	
Color Code	850 [ CCT of 5000K]
Beam Angle (Nom)	240 °
Luminous Flux (Nom)	1800 lm
Color Designation	Daylight
Correlated Color Temperature (Nom)	5000 K
Luminous Efficacy (rated) (Nom)	144.00 lm/W
Color Consistency	<5
Color Rendering Index (Nom)	82
LLMF At End Of Nominal Lifetime (Nom)	70 %
Operating and electrical	
Input Frequency	50 to 60 Hz

Power (Nom)	12.5 13 W
Lamp Current (Max)	110 mA
Lamp Current (Min)	45 mA
Starting Time (Nom)	0.5 s
Warm Up Time to 60% Light (Nom)	0.5 s
UL Type	Type A+B - works with or without a ballast
Power Factor (Nom)	0.9
Voltage (Nom)	120-277 V
Temperature	
T-Ambient (Max)	45 °C
T-Ambient (Min)	-20 °C
T-Storage (Max)	65 °C
T-Storage (Min)	-40 °C
T-Case Maximum (Nom)	60 °C
Controls and dimming	
Dimmable	No

# T8

## Mechanical and housing

Bulb Finish	Frosted
Bulb Material	Glass
Product Length	1200 mm
Bulb Shape	Tube, double-ended

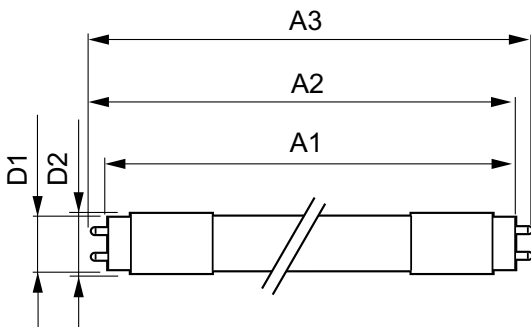
## Approval and application

Energy Saving Product	Yes
Approval Marks	RoHS compliance UL certificate DLC compliance

## Product data

Order product name	12.5T8/COR/48-850/FF18/G/DIM 25/1
EAN/UPC - Product	046677600198
Order code	929002317404
Numerator - Quantity Per Pack	1
Numerator - Packs per outer box	25
Material Nr. (12NC)	929002317404
Net Weight (Piece)	0.180 kg

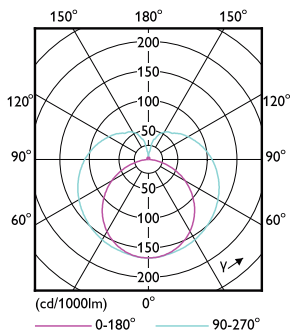
## Dimensional drawing



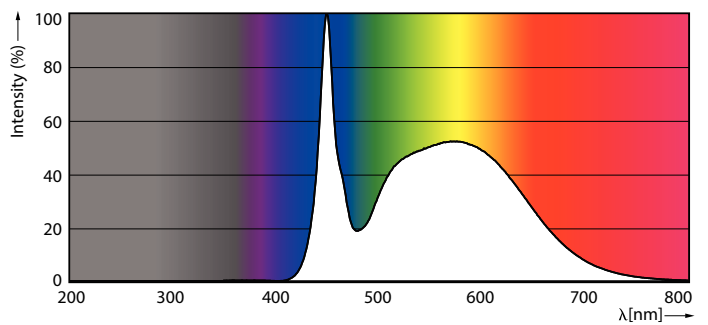
12.5T8/COR/48-850/FF18/G/DIM 25/1

Product	D1	D2	A1	A2	A3
12.5T8/COR/48-850/FF18/G/DIM 25/1	25.7 mm	28 mm	1198.2 mm	1205.3 mm	1212.4 mm

## Photometric data

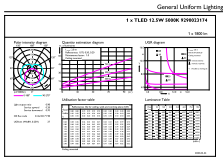


LEDtube COR 12,5W G13



LEDtube COR 12,5W G13 1800lm 850

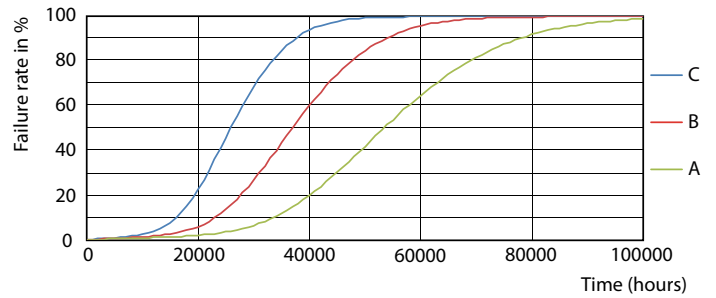
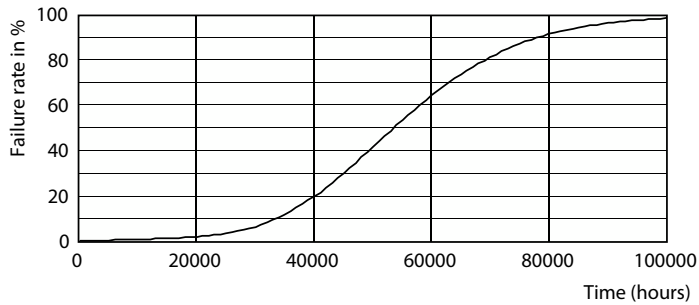
Photometric data



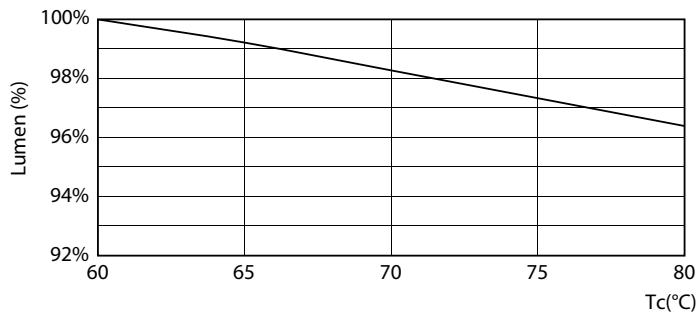
© 2021 Philips Lighting B.V. Page 10 of 11

LEDtube COR 12,5W G13 1800lm 850

Lifetime

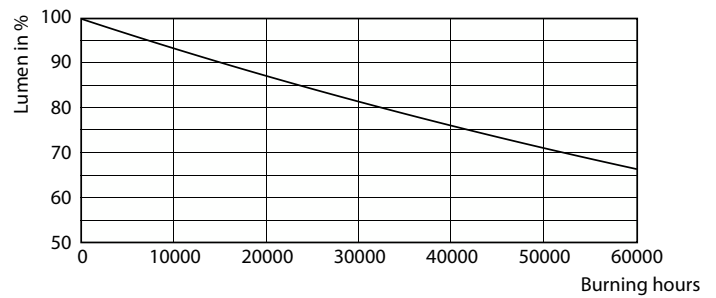


Life Expectancy Diagram



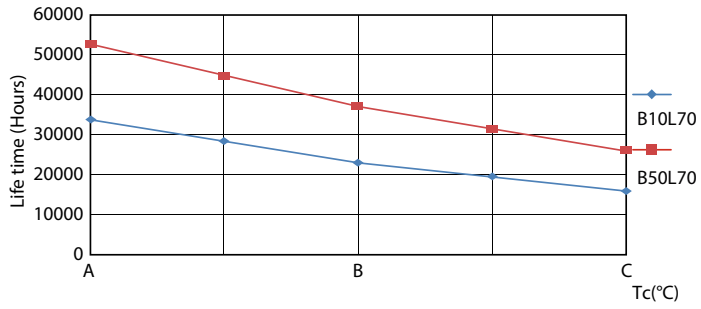
LEDtube 12,5W 50K 1 LumenVsTc

LEDtube 50K FailureRate-LED



Lumen Maintenance Diagram

Lifetime



LEDtube 50K LifetimeVsTc-LED

