



### Main

Range of Product	Modicon M171/M172
Product or Component Type	Additional I/O module
Product Specific Application	HVAC and pumping solution
Total inputs/outputs	14
Discrete input number	4
Discrete output number	1 relay outputs SPDT with independent common 3 relay outputs SPST with same common
Discrete output current	3 A relay
Analogue input number	4 configurable by pair
Analogue output number	2 voltage 0...10 V

### Complementary

Number of port	1 CAN port - screw terminal block
Input/output number	2 analog output 4 digital output 4 analog input 4 digital input
Discrete input logic	Sink or source (positive/negative)
Discrete input voltage	24 V AC/DC
Discrete input current	2.5 mA
Input impedance	20 kOhm
Analogue input type	Voltage 0...5 V ratiometric) Current 4...20 mA Voltage 0...10 V NTC temperature probe - 50...110 °C 0.1 °C NTC temperature probe - 40...137 °C 0.1 °C extended) PTC temperature probe - 50...150 °C 0.1 °C
Sensor power supply	12 V DC 85 mA
[Us] rated supply voltage	24 V

### Ordering and shipping details

Category	22537-M171 / M172 HVAC CONTROLLERS
Discount Schedule	PC12
GTIN	3606480752704
Nbr. of units in pkg.	1
Package weight(Lbs)	8.71 oz (247.0 g)
Returnability	Yes
Country of origin	IT

### Packing Units

Unit Type of Package 1	PCE
Package 1 Height	5.12 in (13 cm)
Package 1 width	3.58 in (9.1 cm)
Package 1 Length	7.48 in (19 cm)
Unit Type of Package 2	S02
Number of Units in Package 2	6
Package 2 Weight	3.94 lb(US) (1.789 kg)

Package 2 Height	5.91 in (15 cm)
Package 2 width	11.81 in (30 cm)
Package 2 Length	15.75 in (40 cm)

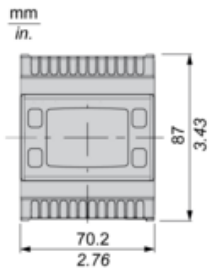
## Offer Sustainability

Sustainable offer status	Green Premium product
California proposition 65	WARNING: This product can expose you to chemicals including: Lead and lead compounds, which is known to the State of California to cause cancer and birth defects or other reproductive harm. For more information go to <a href="http://www.P65Warnings.ca.gov">www.P65Warnings.ca.gov</a>
REACH Regulation	<a href="#">REACH Declaration</a>
REACH free of SVHC	Yes
EU RoHS Directive	Pro-active compliance (Product out of EU RoHS legal scope) <a href="#">EU RoHS Declaration</a>
Mercury free	Yes
RoHS exemption information	<a href="#">Yes</a>
China RoHS Regulation	<a href="#">China RoHS Declaration</a>
Environmental Disclosure	<a href="#">Product Environmental Profile</a>
Circularity Profile	<a href="#">End Of Life Information</a>
WEEE	The product must be disposed on European Union markets following specific waste collection and never end up in rubbish bins.

---

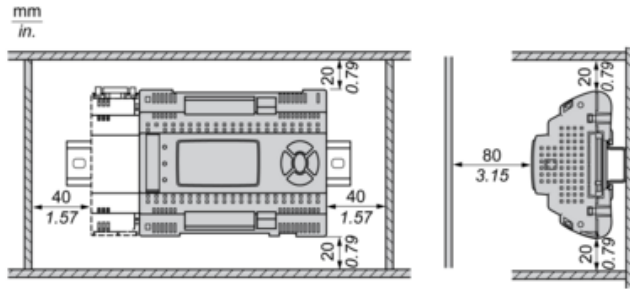
Dimensions

---

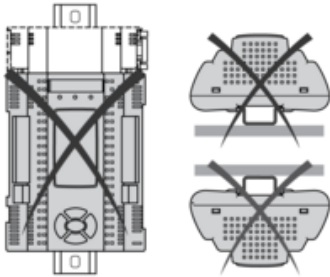


Mounting and Clearance

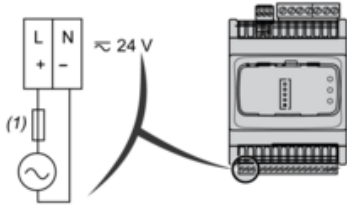
Clearance



Misplacement

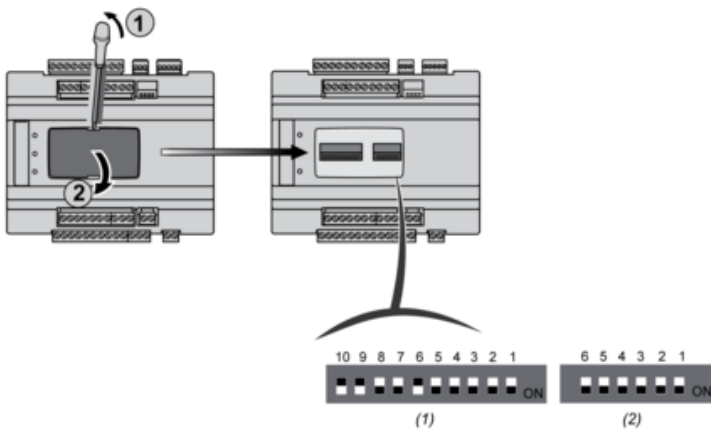


Power Supply



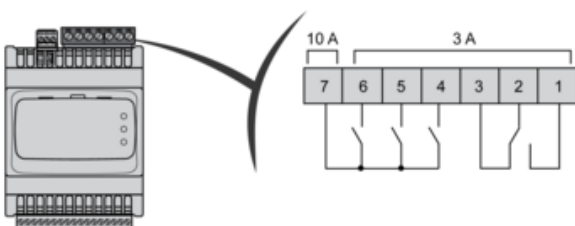
(1) Type T fuse 1.25 A

6 - 10 DipSwitches



(1) 10 DIP SWITCH  
(2) 6 DIP SWITCH

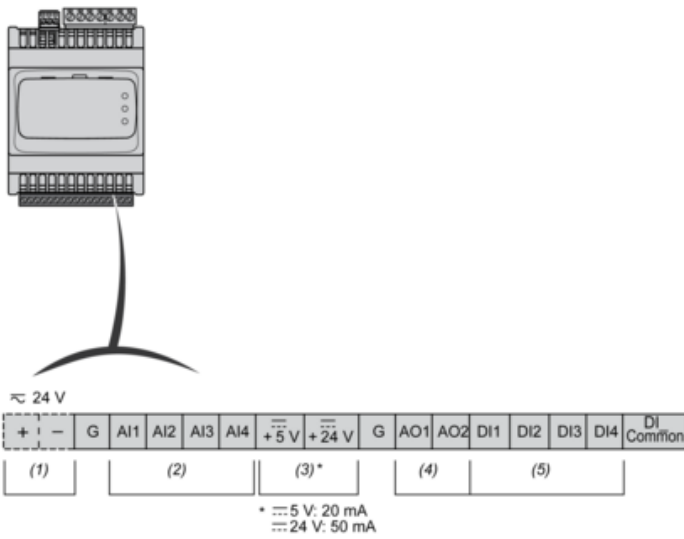
Digital Outputs



N°	Pin -out
1	DO1-N.O.
2	COMMON DO1
3	DO1-N.C.
4	DO2-N.O.
5	DO3-N.O.
6	DO4-N.O.
7	Common DO2, DO3,DO4

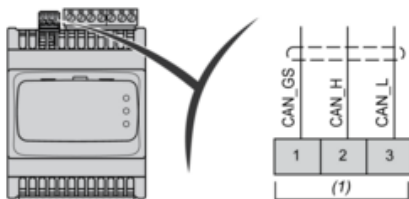
N.C.: Normally Closed  
N.O.: Normally Open

## Low Voltage I/O



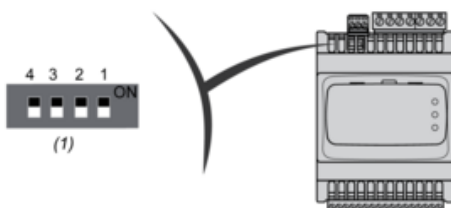
- (1) Power Supply
- (2) Analog Input
- (3) Power Out
- (4) Analog Output
- (5) Digital Input

## Expansion Bus (CAN)



- (1) CAN

## 4 DipSwitches



- (1) LOW Address