

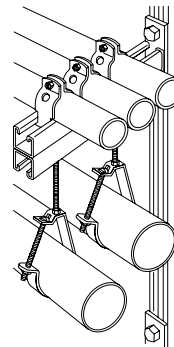
Wall and Support Brackets

Kindorf® wall brackets provide a ready-made shelving arrangement that can be attached quickly to the supporting channels.

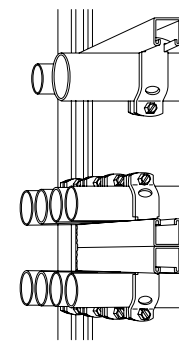
Utilizing the built-in advantages of the Kindorf® Channel, the support bracket members allow a great deal of flexibility in meeting the structural framing needs.

Axle supports and a variety of wall brackets all adapt to the standard Kindorf® channel and allow additional flexibility in the support of cables, conduit, pipe and other equipment.

The application of axle supports and bracket members can be made on either the continuous slot of the channel or the pre-punched hole side. Utilizing the 1½" hole spacing, greater adaptability is attained with a minimum of fittings.



F-721 Wall bracket hangs and supports pipe runs.



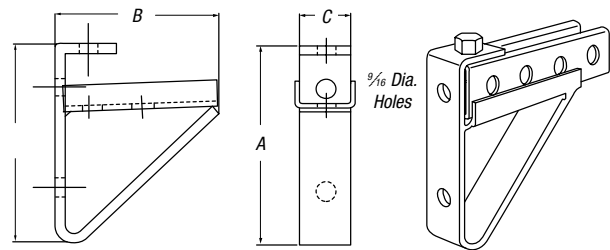
Conduit installations supported above and below by F-721 wall bracket.

F-715 Wall Bracket

Mounts on Kindorf® channel or directly to wall. F-715 bracket supports 1½" or 1⅝" channels. Brackets allow for a variety of support channel lengths. The continuous tray on brackets prevent lateral movement of supported channels. Support channels can be fastened from top, bottom or both.

CAT. NO.	DIMENSIONS (IN.)			WT. LBS./C.
	A	B	C	
F-715	5 ²⁷ / ₃₂	4 ⁵ / ₈	1½	163

Galv-Krom® finish.

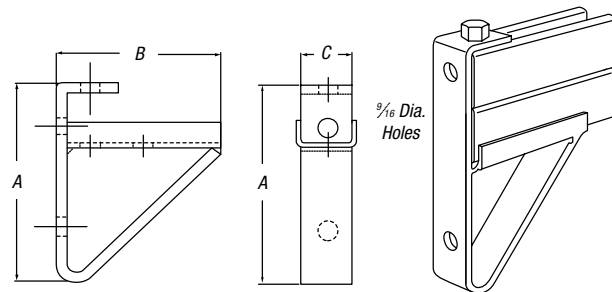


F-716-3 Wall Bracket

Mounts on Kindorf® channel or directly to wall. F-716-3 bracket supports 3" deep or back-to-back channels. Brackets allow for a variety of support channel lengths. The continuous tray on brackets prevent lateral movement of supported channels. Support channels can be fastened from top, bottom or both.

CAT. NO.	DIMENSIONS (IN.)			WT. LBS./C.
	A	B	C	
F-716-3	7 ¹¹ / ₃₂	4 ⁵ / ₈	1½	179

Galv-Krom® finish.



F-720 Wall Bracket

Mounts on Kindorf® channel, concrete inserts or directly to wall. Continuous-slot accepts C-105, C-106 and C-107 series pipe straps. Bracket is 12-gauge steel, 1½" x 1½" channel welded to a ¼" back plate. May be attached to either the continuous slot side or pre-punched holes in back or side of Kindorf® channel.

CAT. NO.	DIM. A (IN.)	END LOAD RATING LBS.*	WT. LBS./C
F720-6**	6	600	132
F-720-9**	9	450	155
F-720-12**	12	300	200
F-720-18	18	200	275
F-720-24**	24	150	350

* Safety factor of 3.

** This product available in green & hot-dipped galvanized.

Standard finish: Galv-Krom®.

