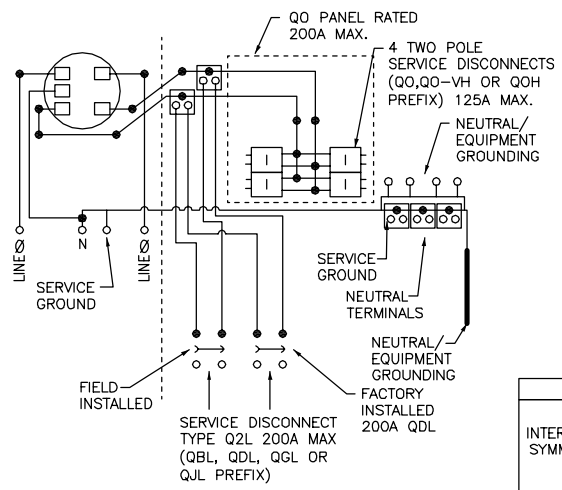
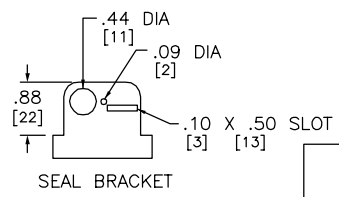
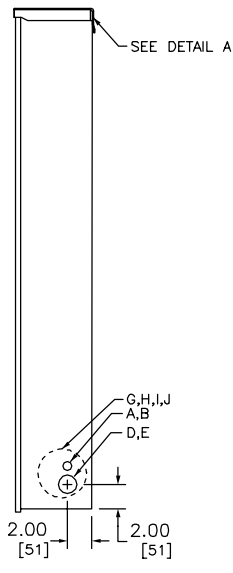
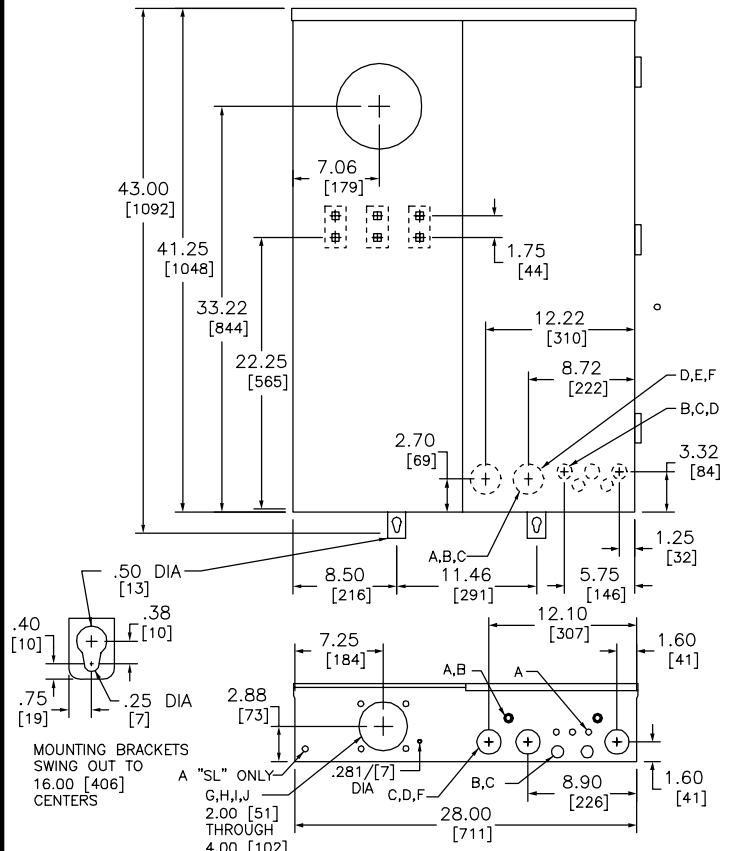


KNOCKOUTS		
SYMBOL	CONDUIT SIZE	
	IN	MM
A	.50	13
B	.75	19
C	1.00	25
D	1.25	32
E	1.50	38
F	2.00	51
G	2.50	64
H	3.00	76
I	3.50	89
J	4.00	102



TWO POLE TYPES QO, QOA OR QOC ONLY. INSTALL NO MORE THAN FOUR CIRCUIT BREAKERS. CIRCUIT BREAKER IS LIMITED TO 125 AMP MAX.

USE ONLY SQUARE D TYPE SERVICE DISCONNECTS WITH PREFIXES QO, QB, QD, QG OR QJ AND REPLACEMENT PARTS. WITH THIS PRODUCT. USE OF OTHER COMPONENTS VOIDS THE WARRANTY, MAY VOID THE UL LISTING AND MAY RESULT IN PROPERTY LOSS OR PERSONAL INJURY.

A SQUARE D UL LISTED SECONDARY SURGE ARRESTER MAY PLUG ON TWO ADJACENT SPACES. ORDER CATALOG NO Q02175SB.

INTERRUPTING RATING RMS SYMMETRICAL AMPERES @ 240 VAC MAX.	SERVICE DISCONNECT	
	CATALOG DESIGNATION	CURRENT RATING AMPERE MAX.
	10,000	QO
22,000	QO-VH	125
42,000	QOH	125
10,000	QBL	200
25,000	QDL	200
65,000	QGL	200
100,000	QJL	200

NOTES:
 FINISH - GRAY BAKED ENAMEL POWDER COAT PAINT OVER CLEANED GALVANNEALED STEEL.
 UL LISTED - FILE E-6294, VOL. M
 SUITABLE ONLY FOR USE AS SERVICE EQUIPMENT. INSTALL NO MORE THAN SIX MAIN DISCONNECTING MEANS.
 SUITABLE FOR UNDERGROUND SERVICE ONLY. FOR OVERHEAD SERVICE ENTRANCE, ORDER OCK400 OVERHEAD FEED TROUGH.
 FOR METER SOCKET COVER WITH HANDLES, ORDER R400L. (QU12L400CL ONLY)
 CONVERTIBLE TO SEMIFLUSH WITH FK400 FLANGE KIT. (QU12L400CL ONLY)
 QU12L400SL IS SURFACE MOUNT ONLY, NOT CONVERTIBLE TO SEMI-FLUSH.
 QU12L400SL DOES NOT HAVE A-L HUB MOUNTING HOLES IN BOTTOM ENDWALL.

CATALOG NUMBER	SERIES	METER SOCKET CLASS	BYPASS TYPE	MAXIMUM SYSTEM VOLTAGE	AMPERE RATING	SPACES	MAXIMUM NUMBER OF TWO POLE CIRCUITS	MAIN WIRE SIZE AWG/kcmil AL/CU
QU12L400CL	M01	CLASS 320 5 JAW	LEVER	120/240VAC 1Ø 3W	400	12	6	SUPPLIED WITH LUG PADS - ORDER LUGS SEPARATELY
QU12L400SL	M02							

COMBINATION SERVICE ENTRANCE DEVICES
 RINGLESS METER MAIN
 RAINPROOF NEMA TYPE 3R ENCLOSURE
 SURFACE/SEMIFLUSH



DWG# 3313
 NO.