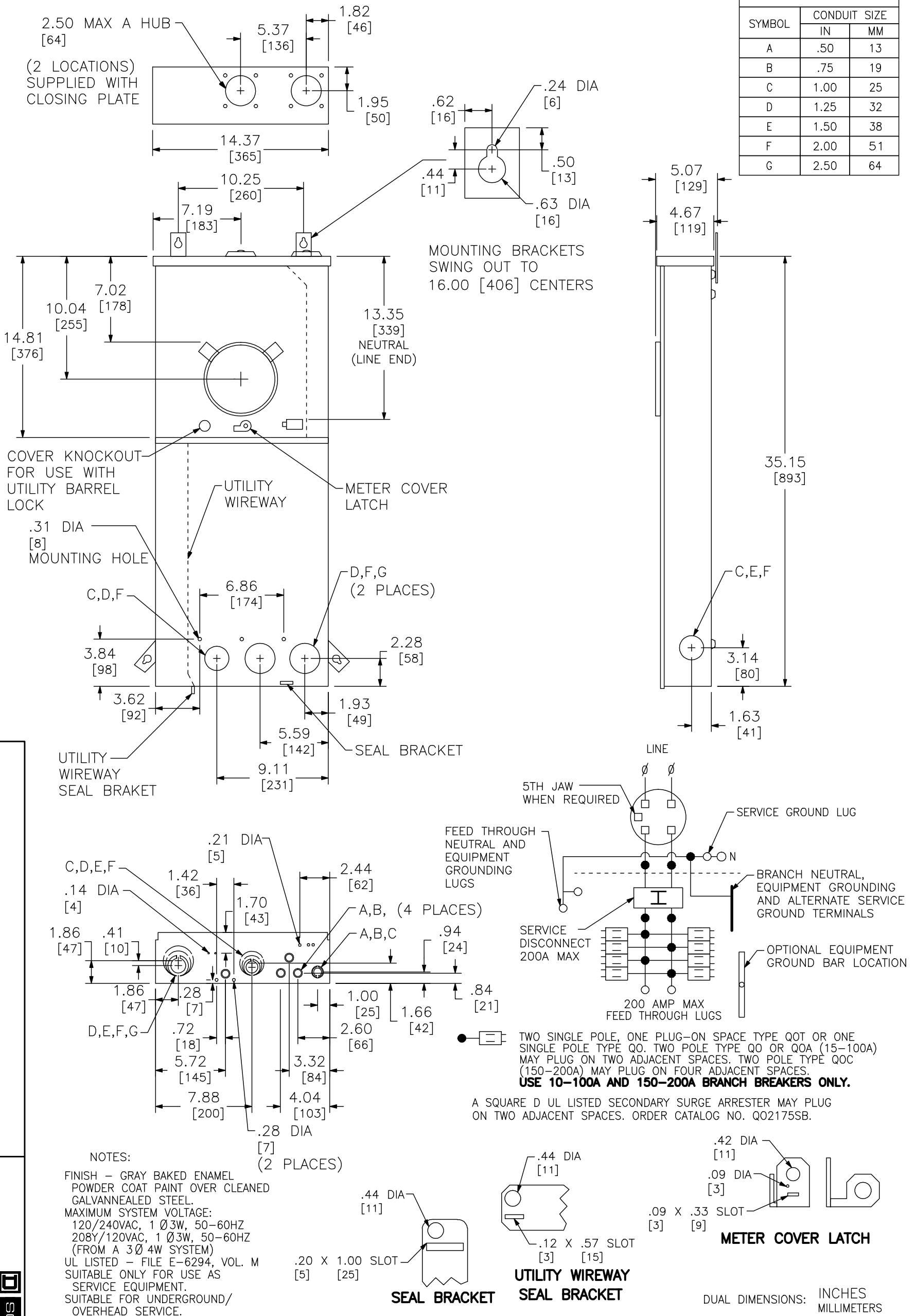


KNOCKOUTS		
SYMBOL	CONDUIT SIZE	
	IN	MM
A	.50	13
B	.75	19
C	1.00	25
D	1.25	32
E	1.50	38
F	2.00	51
G	2.50	64



NOTES:  
 FINISH - GRAY BAKED ENAMEL POWDER COAT PAINT OVER CLEANED GALVANNEALED STEEL.  
 MAXIMUM SYSTEM VOLTAGE:  
 120/240VAC, 1 Ø 3W, 50-60HZ  
 208Y/120VAC, 1 Ø 3W, 50-60HZ (FROM A 3 Ø 4W SYSTEM)  
 UL LISTED - FILE E-6294, VOL. M  
 SUITABLE ONLY FOR USE AS SERVICE EQUIPMENT.  
 SUITABLE FOR UNDERGROUND/OVERHEAD SERVICE.

DUAL DIMENSIONS: INCHES MILLIMETERS

MAINS AMPERE RATING	FACTORY INSTALLED BYPASS TYPE	SHORT CIRCUIT CURRENT RATING	CATALOG NUMBER	SERIES	SPACES	MAXIMUM NUMBER OF SINGLE POLE QO CIRCUITS	LINE SIDE PHASE & NEUTRAL LUGS AWG/KCMIL	SERVICE GROUND LUG	FEED THROUGH LUGS PHASE & NEUTRAL AWG/KCMIL
100	HORN	22K	QC816F100CH	M01	8	16	#6-350 CU/AL	#14-2/0 CU #12/2/0 AL	#6-300 CU/AL
125	NONE		QC816F125C						
	HORN		QC816F125CH						
150	NONE		QC816F150C						
	HORN		QC816F150CH						
200	NONE		QC816F200C						
	HORN	QC816F200CH							

COMBINATION SERVICE ENTRANCE DEVICES  
 RINGLESS METER MAIN  
 RAINPROOF MENA TYPE 3R ENCLOSURE  
 SURFACE ONLY

DWG# 3166  
 NO.

**SQUARE D**  
 by Schneider Electric