

Product data sheet

Specifications

SQUARE D



Safety switch, heavy duty, non fusible, 30A, 4 wire, 3 pole, 1 neutral, 30HP, 600V AC/DC, NEMA 3R, bolt on hub provision

HU361NRB

! Discontinued

! Discontinued on: Jan 31, 2024

Product availability: Non-Stock - Not normally stocked in distribution facility

Main

Product	Single Throw Safety Switch
Duty Rating	Heavy duty
Device Application	Heavy application
Disconnect Type	Non-fusible disconnect
Factory Installed Neutral	Neutral (factory installed)
Number of Poles	3
Current Rating	30 A
Voltage Rating	600 V AC/DC
Enclosure Rating	NEMA 3R galvanized steel
Motor power hp	2 hp at 120 V AC 50-60 Hz for 1 phase motors 5 hp at 240 V AC 50-60 Hz for 1 phase motors 10 hp at 240 V AC 50-60 Hz for 3 phase motors 7.5 hp at 480 V AC 50-60 Hz for 1 phase motors 20 hp at 480 V AC 50-60 Hz for 3 phase motors 10 hp at 600 V AC 50-60 Hz for 1 phase motors 30 hp at 600 V AC 50-60 Hz for 3 phase motors 3 hp at 125 V DC 5 hp at 250 V DC 15 hp at 600 V DC

Complementary

Mounting Type	Surface
Electrical Connection	Lugs
Wiring configuration	4-wire (3PH + N)
Wire Size	AWG 12...AWG 6 aluminium AWG 14...AWG 6 copper
Tightening torque	45 lbf.in (5.08 N.m) 0.02 in ² (13.3 mm ²) (AWG 6) 40 lbf.in (4.5 N.m) 0.013 in ² (8.367 mm ²) (AWG 8) 35 lbf.in (4.0 N.m) 0.003...0.008 in ² (2.06...5.261 mm ²) (AWG 14...AWG 10)
Depth	4.86 in (123.44 mm)
Width	7.55 in (191.77 mm)
Height	14.88 in (377.95 mm)
Product Weight	8.8 lb(US) (4 kg)

Environment

Price is "List Price" and may be subject to a trade discount – check with your local distributor or retailer for actual price.

Certifications	UL listed file E2875
-----------------------	----------------------

Ordering and shipping details

Category	US10DE100009
-----------------	--------------

Discount Schedule	0DE1
--------------------------	------

GTIN	785901077886
-------------	--------------

Returnability	Yes
----------------------	-----

Country of origin	US
--------------------------	----

Packing Units

Unit Type of Package 1	PCE
-------------------------------	-----

Number of Units in Package 1	1
-------------------------------------	---

Package 1 Height	16.10 in (40.894 cm)
-------------------------	----------------------

Package 1 Width	5.40 in (13.716 cm)
------------------------	---------------------

Package 1 Length	7.80 in (19.812 cm)
-------------------------	---------------------

Package 1 Weight	8.411 lb(US) (3.815 kg)
-------------------------	-------------------------

Contractual warranty

Warranty	18 months
-----------------	-----------

Environmental Data

Schneider Electric aims to achieve Net Zero status by 2050 through supply chain partnerships, lower impact materials, and circularity via our ongoing “Use Better, Use Longer, Use Again” campaign to extend product lifetimes and recyclability.

[Environmental Data explained >](#)

[How we assess product sustainability >](#)

Environmental footprint

Carbon footprint (kg CO2 eq, Total Life cycle) 34

Environmental Disclosure [Product Environmental Profile](#)

Use Better

Materials and Substances

Packaging made with recycled cardboard Yes

Packaging without single use plastic Yes

[EU RoHS Directive](#) Compliant with Exemptions

California proposition 65 **WARNING: This product can expose you to chemicals including: Lead and lead compounds, which is known to the State of California to cause cancer and birth defects or other reproductive harm. For more information go to www.P65Warnings.ca.gov**

PVC free Yes

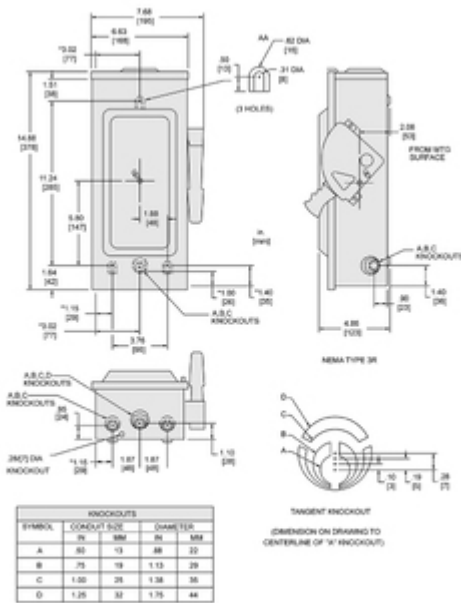
Use Again

Repack and remanufacture

Circularity Profile No need of specific recycling operations

Technical Illustration

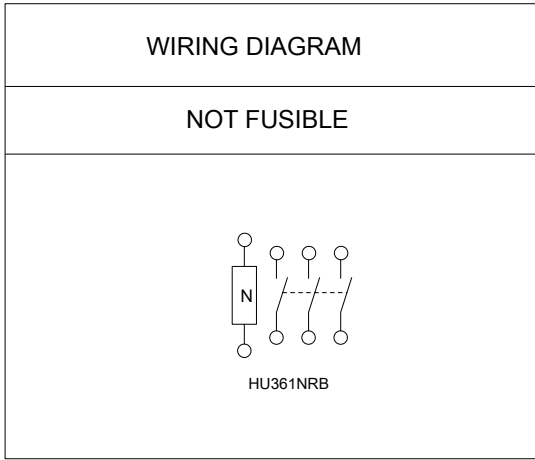
Dimensions



*DIMENSIONS TO BOX (NOT COVER)
 ALL DIMENSIONS ARE APPROXIMATE
 REFER TO TECHNICAL DRAWINGS AND DOCUMENTATION FOR COMPLETE INFORMATION

Technical Illustration

Wiring diagram



TERMINAL LUGS			
AMPERES	MAX WIRE	MIN WIRE	TYPE
30	#6 AWG	#14 AWG	AL OR CU

Technical Drawing 2229S, Wiring Diagram E