

Product data sheet

Specifications

SQUARE D



Safety switch, heavy duty, fusible, 200A, 4 wire, 3 pole, 1 neutral, 150hp, 600VAC/DC, NEMA 1

H364N

⚠ Discontinued on: Jan 31, 2024

⚠ Discontinued

Product availability: Stock - Normally stocked in distribution facility

Main

Product	Single Throw Safety Switch
Duty Rating	Heavy duty
Device Application	Heavy application
Disconnect Type	Fusible disconnect
Factory Installed Neutral	Neutral (factory installed)
Number of Poles	3
Current Rating	200 A
Voltage Rating	600 V AC/DC
Enclosure Rating	NEMA 1 steel
Motor power hp	50 hp at 480 V AC 50-60 Hz for 3 phase motors 125 hp at 480 V AC 50-60 Hz for 3 phase motors 60 hp at 600 V AC 50-60 Hz for 3 phase motors 150 hp at 600 V AC 50-60 Hz for 3 phase motors 40 hp at 250 V DC 50 hp at 600 V DC

Complementary

Short-circuit current	10 kA for H or K 200 kA for R or J
Fuse type	H or K R or J
Mounting Type	Surface
Electrical Connection	Lugs
Wiring configuration	4-wire (3PH + N)
Wire Size	AWG 6...250 kcmil copper or aluminium
Tightening torque	275 lbf.in (31.07 N.m) 0.02...0.2 in ² (13.3...127 mm ²) (AWG 6...250 kcmil)
Depth	8.25 in (209.55 mm)
Width	18.5 in (469.9 mm)
Height	29 in (736.6 mm)
Product Weight	55.49 lb(US) (25.17 kg)

Environment

Certifications	UL listed file E2875
----------------	----------------------

Price is "List Price" and may be subject to a trade discount – check with your local distributor or retailer for actual price.

Ordering and shipping details

Category	US10DE100008
Discount Schedule	0DE1
GTIN	785901482338
Returnability	Yes
Country of origin	US

Packing Units

Unit Type of Package 1	PCE
Number of Units in Package 1	1
Package 1 Height	8.40 in (21.336 cm)
Package 1 Width	19.30 in (49.022 cm)
Package 1 Length	31.00 in (78.74 cm)
Package 1 Weight	45.79 lb(US) (20.77 kg)

Contractual warranty

Warranty	18 months
----------	-----------




Environmental Data


Schneider Electric aims to achieve Net Zero status by 2050 through supply chain partnerships, lower impact materials, and circularity via our ongoing “Use Better, Use Longer, Use Again” campaign to extend product lifetimes and recyclability.

[Environmental Data explained >](#)


[How we assess product sustainability >](#)

 Environmental footprint	
Carbon footprint (kg CO2 eq, Total Life cycle)	209
Environmental Disclosure	Product Environmental Profile

Use Better

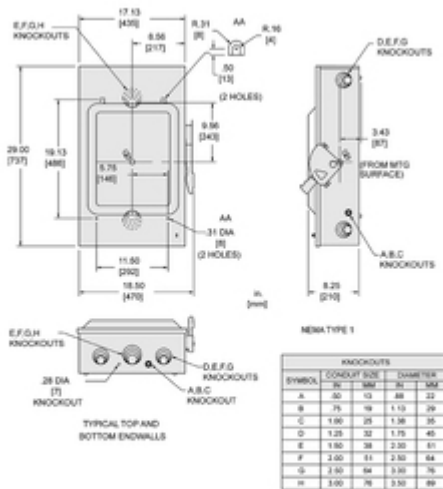
 Materials and Substances	
Packaging made with recycled cardboard	Yes
Packaging without single use plastic	Yes
EU RoHS Directive	Compliant
California proposition 65	WARNING: This product can expose you to chemicals including: Lead and lead compounds, which is known to the State of California to cause cancer and birth defects or other reproductive harm. For more information go to www.P65Warnings.ca.gov
PVC free	Yes

Use Again

 Repack and remanufacture	
Circularity Profile	No need of specific recycling operations

Technical Illustration

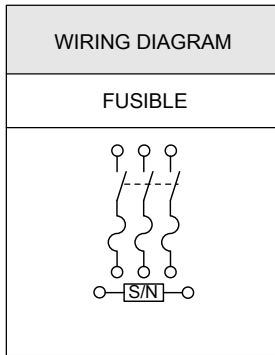
Dimensions



WHEN MOUNTING THESE SWITCHES, ALLOW 4 (102) MM CLEARANCE BETWEEN ENCLOSURES FOR OPENING OF SIDE HINGED DOOR.
 ALL DIMENSIONS ARE APPROXIMATE.
 REFER TO TECHNICAL DRAWINGS AND DOCUMENTATION FOR COMPLETE INFORMATION.

Technical Illustration

Wiring diagram



H324N
H364N