

# Product data sheet

Specifications

SQUARE D



Safety switch, heavy duty, fusible, 60A, 3 wire, 3 pole, 50hp, 600VAC/DC, NEMA 1

H362

⚠ Discontinued on: Jan 31, 2024

⚠ Discontinued

Product availability: Stock - Normally stocked in distribution facility

## Main

Product	Single Throw Safety Switch
Duty Rating	Heavy duty
Device Application	Heavy application
Disconnect Type	Fusible disconnect
Factory Installed Neutral	None
Number of Poles	3
Current Rating	60 A
Voltage Rating	600 V AC/DC
Enclosure Rating	NEMA 1 steel
Motor power hp	15 hp at 480 V AC 50-60 Hz for 3 phase motors 30 hp at 480 V AC 50-60 Hz for 3 phase motors 15 hp at 600 V AC 50-60 Hz for 3 phase motors 50 hp at 600 V AC 50-60 Hz for 3 phase motors 30 hp at 600 V DC

## Complementary

Short-circuit current	10 kA for H or K 200 kA for R or J
Fuse type	H or K R or J
Mounting Type	Surface
Electrical Connection	Lugs
Wiring configuration	3-wire
Wire Size	AWG 14...AWG 3 copper AWG 12...AWG 3 aluminium
Tightening torque	50 lbf.in (5.6 N.m) (AWG 3) 45 lbf.in (5.08 N.m) (AWG 6...AWG 4) 40 lbf.in (4.5 N.m) 0.013 in <sup>2</sup> (8.367 mm <sup>2</sup> ) (AWG 8) 50 lbf.in (5.6 N.m) 0.003...0.008 in <sup>2</sup> (2.06...5.261 mm <sup>2</sup> ) (AWG 14...AWG 10)
Depth	6.38 in (162.05 mm)
Width	10.5 in (266.7 mm)
Height	17.5 in (444.5 mm)
Product Weight	15.4 lb(US) (7 kg)

## Environment

Price is "List Price" and may be subject to a trade discount – check with your local distributor or retailer for actual price.

---

Certifications	UL listed file E2875
----------------	----------------------

## Ordering and shipping details

---

Category	US10DE100008
Discount Schedule	0DE1
GTIN	785901482147
Returnability	No
Country of origin	US

## Packing Units

---

Unit Type of Package 1	PCE
Number of Units in Package 1	1
Package 1 Height	7.30 in (18.542 cm)
Package 1 Width	10.90 in (27.686 cm)
Package 1 Length	20.00 in (50.8 cm)
Package 1 Weight	15.099 lb(US) (6.849 kg)
Unit Type of Package 2	PAL
Number of Units in Package 2	40
Package 2 Height	41.00 in (104.14 cm)
Package 2 Width	40.00 in (101.6 cm)
Package 2 Length	48.00 in (121.92 cm)
Package 2 Weight	636.001 lb(US) (288.485 kg)

## Contractual warranty

---

Warranty	18 months
----------	-----------




## Environmental Data


Schneider Electric aims to achieve Net Zero status by 2050 through supply chain partnerships, lower impact materials, and circularity via our ongoing “Use Better, Use Longer, Use Again” campaign to extend product lifetimes and recyclability.

[Environmental Data explained >](#)



[How we assess product sustainability >](#)

 <b>Environmental footprint</b>	
Carbon footprint (kg CO2 eq, Total Life cycle)	69
Environmental Disclosure	<a href="#">Product Environmental Profile</a>

### Use Better

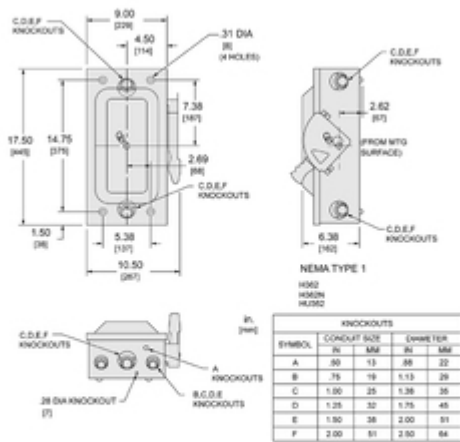
 <b>Materials and Substances</b>	
Packaging made with recycled cardboard	Yes
Packaging without single use plastic	No
<a href="#">EU RoHS Directive</a>	Compliant with Exemptions
California proposition 65	<b>WARNING:</b> This product can expose you to chemicals including: Lead and lead compounds, which is known to the State of California to cause cancer and birth defects or other reproductive harm. For more information go to <a href="http://www.P65Warnings.ca.gov">www.P65Warnings.ca.gov</a>
PVC free	Yes

### Use Again

 <b>Repack and remanufacture</b>	
Circularity Profile	No need of specific recycling operations
WEEE	 The product must be disposed on European Union markets following specific waste collection and never end up in rubbish bins.

Technical Illustration

Dimensions



WHEN MOUNTING THESE SWITCHES, ALLOW 4.05(162) MIN. CLEARANCE BETWEEN ENCLOSURES FOR OPENING OF SIDE HINGED DOOR.

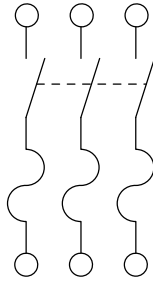
ALL DIMENSIONS ARE APPROXIMATE. REFER TO TECHNICAL DRAWINGS AND DOCUMENTATION.

Technical Illustration

Wiring diagram

---

FUSIBLE



H362  
H362RB