

Product data sheet

Specifications

SQUARE D



Safety switch, heavy duty, fusible, 30A, 3 wire, 3 pole, 20hp, 600VAC/DC, NEMA 3R, bolt on hub provision

H361RB

! Discontinued

! Discontinued on: Jan 31, 2024

Product availability: Stock - Normally stocked in distribution facility

Main

| | |
|---------------------------|---|
| Product | Single Throw Safety Switch |
| Duty Rating | Heavy duty |
| Device Application | Heavy application |
| Disconnect Type | Fusible disconnect |
| Factory Installed Neutral | None |
| Number of Poles | 3 |
| Current Rating | 30 A |
| Voltage Rating | 600 V AC/DC |
| Enclosure Rating | NEMA 3R galvanized steel |
| Motor power hp | 5 hp at 480 V AC 50-60 Hz for 3 phase motors 15 hp at 480 V AC 50-60 Hz for 3 phase motors 7.5 hp at 600 V AC 50-60 Hz for 3 phase motors 20 hp at 600 V AC 50-60 Hz for 3 phase motors 5 hp at 250 V DC 15 hp at 600 V DC |

Complementary

| | |
|-----------------------|--|
| Short-circuit current | 10 kA for H or K 200 kA for R or J |
| Fuse type | H or K R or J |
| Mounting Type | Surface |
| Electrical Connection | Lugs |
| Wiring configuration | 3-wire |
| Wire Size | AWG 12...AWG 6 aluminium AWG 14...AWG 6 copper |
| Tightening torque | 45 lbf.in (5.08 N.m) 0.02 in ² (13.3 mm ²) (AWG 6) 40 lbf.in (4.5 N.m) 0.013 in ² (8.367 mm ²) (AWG 8) 35 lbf.in (4.0 N.m) 0.003...0.008 in ² (2.06...5.261 mm ²) (AWG 14...AWG 10) |
| Depth | 4.86 in (123.44 mm) |
| Width | 7.55 in (191.77 mm) |
| Height | 14.88 in (377.95 mm) |
| Product Weight | 9.11 lb(US) (4.13 kg) |

Price is "List Price" and may be subject to a trade discount – check with your local distributor or retailer for actual price.

Environment

| | |
|----------------|----------------------|
| Certifications | UL listed file E2875 |
|----------------|----------------------|

Ordering and shipping details

| | |
|----------|--------------|
| Category | US10DE100009 |
|----------|--------------|

| | |
|-------------------|------|
| Discount Schedule | 0DE1 |
|-------------------|------|

| | |
|------|--------------|
| GTIN | 785901481966 |
|------|--------------|

| | |
|---------------|-----|
| Returnability | Yes |
|---------------|-----|

| | |
|-------------------|----|
| Country of origin | US |
|-------------------|----|

Packing Units

| | |
|------------------------|-----|
| Unit Type of Package 1 | PCE |
|------------------------|-----|

| | |
|------------------------------|---|
| Number of Units in Package 1 | 1 |
|------------------------------|---|

| | |
|------------------|---------------------|
| Package 1 Height | 5.30 in (13.462 cm) |
|------------------|---------------------|

| | |
|-----------------|---------------------|
| Package 1 Width | 7.70 in (19.558 cm) |
|-----------------|---------------------|

| | |
|------------------|----------------------|
| Package 1 Length | 16.20 in (41.148 cm) |
|------------------|----------------------|

| | |
|------------------|-------------------------|
| Package 1 Weight | 8.501 lb(US) (3.856 kg) |
|------------------|-------------------------|

| | |
|------------------------|-----|
| Unit Type of Package 2 | PAL |
|------------------------|-----|

| | |
|------------------------------|-----|
| Number of Units in Package 2 | 120 |
|------------------------------|-----|

| | |
|------------------|---------------------|
| Package 2 Height | 45.00 in (114.3 cm) |
|------------------|---------------------|

| | |
|-----------------|---------------------|
| Package 2 Width | 40.00 in (101.6 cm) |
|-----------------|---------------------|

| | |
|------------------|----------------------|
| Package 2 Length | 48.00 in (121.92 cm) |
|------------------|----------------------|

| | |
|------------------|-------------------------------|
| Package 2 Weight | 1050.0009 lb(US) (476.272 kg) |
|------------------|-------------------------------|

Contractual warranty

| | |
|----------|-----------|
| Warranty | 18 months |
|----------|-----------|

Environmental Data

Schneider Electric aims to achieve Net Zero status by 2050 through supply chain partnerships, lower impact materials, and circularity via our ongoing “Use Better, Use Longer, Use Again” campaign to extend product lifetimes and recyclability.

[Environmental Data explained >](#)

[How we assess product sustainability >](#)

Environmental footprint

Carbon footprint (kg CO2 eq, Total Life cycle) 35

Environmental Disclosure [Product Environmental Profile](#)

Use Better

Materials and Substances

Packaging made with recycled cardboard Yes

Packaging without single use plastic Yes

[EU RoHS Directive](#) Compliant with Exemptions

California proposition 65 **WARNING: This product can expose you to chemicals including: Lead and lead compounds, which is known to the State of California to cause cancer and birth defects or other reproductive harm. For more information go to www.P65Warnings.ca.gov**

PVC free Yes

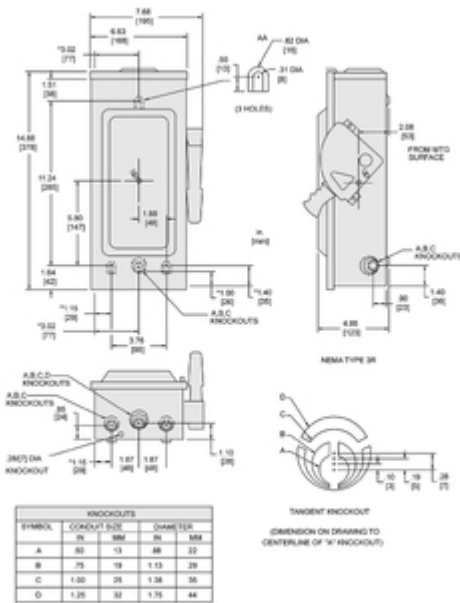
Use Again

Repack and remanufacture

Circularity Profile No need of specific recycling operations

Technical Illustration

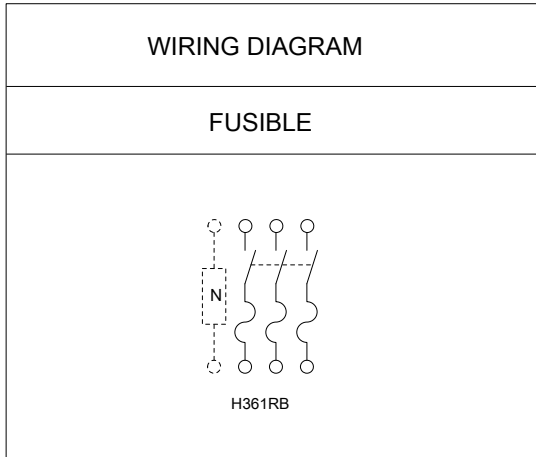
Dimensions



*DIMENSIONS TO BOX (NOT COVER)
ALL DIMENSIONS ARE APPROXIMATE
REFER TO TECHNICAL DRAWINGS AND DOCUMENTATION FOR COMPLETE INFORMATION

Technical Illustration

Wiring diagram



| TERMINAL LUGS | | | |
|---------------|----------|----------|----------|
| AMPERES | MAX WIRE | MIN WIRE | TYPE |
| 30 | #6 AWG | #14 AWG | AL OR CU |

Technical Drawing 2229S, Wiring Diagram C