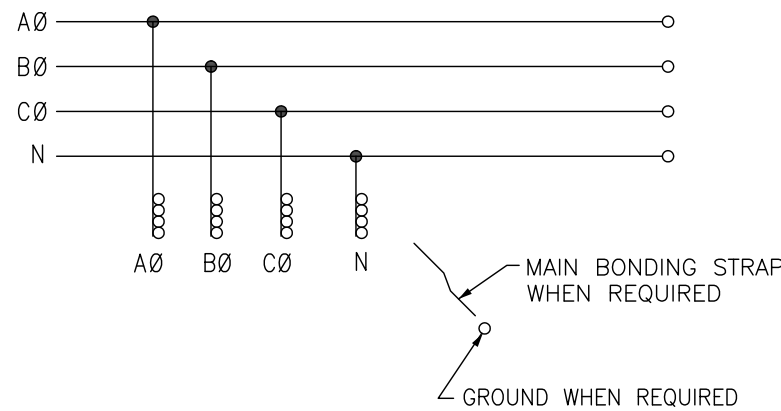
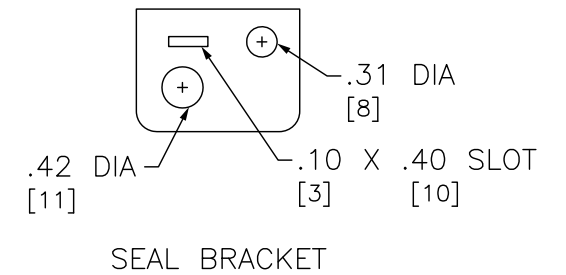
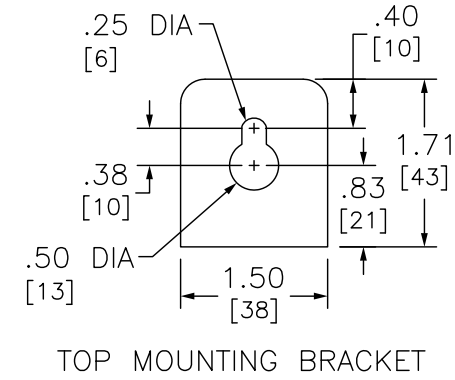
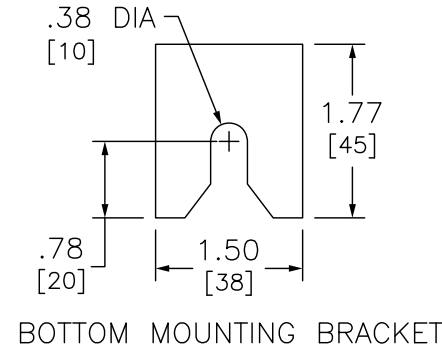


ADDITIONAL NOTES:
 WHEN USED ON THE LINE SIDE OF SERVICE EQUIPMENT, INSTALL BONDING STRAP AND REINSTALL GROUND LUG WHERE APPROPRIATE.
 ▼ ALTERNATE LUG KIT AVAILABLE, ORDER THREE (3) KITS, MMLK250 FOR (1) #1/0 AWG - 600 KCMIL OR (2) #1/0 AWG - 250 KCMIL AL/CU (KIT INCLUDES THREE, 2-BARREL LUGS), EACH BUS BAR WILL ACCOMMODATE TWO, 2-BARREL LUGS ONLY.

KNOCKOUTS		
SYMBOL	CONDUIT SIZE	
	IN	MM
A	.50	13
B	.75	19
E	1.50	38
F	2.00	51
G	2.50	64
H	3.00	76
I	3.50	89
J	4.00	102



DUAL DIMENSIONS: INCHES MILLIMETERS

TERMINAL BOX CAN BE FED FROM AN UPSTREAM SERVICE DISCONNECT AND ATTAIN A SHORT CIRCUIT CURRENT RATING BASED ON OVERCURRENT PROTECTION PROVIDED AS FOLLOWS:	
CLASS R FUSE (600A MAX)	100K
CLASS T FUSE 300VAC (800A MAX)	100K
SQUARE D BREAKER TYPE LH, MH, OR PA RATED 65K	65K
SQUARE D BREAKER TYPE LA OR MA RATED 42K	42K

NOTES:
 FINISH - GRAY BAKED ENAMEL POWDER COAT PAINT OVER CLEANED GALVANNEALED STEEL.
 UL LISTED - FILE-10582, VOL. M, E131840, VOL. M.
 SUITABLE FOR USE ON THE LINE SIDE OF SERVICE EQUIPMENT.
 MAIN HORIZONTAL CROSS BUS RATED AT 800 AMPERES.
 MAIN DEVICES ARE SEALABLE BY UTILITY.
 GANGABLE MULTI-METERING EQUIPMENT IS DESIGNED FOR WALL MOUNTING ONLY.
 (NOT SUITABLE FOR FLOOR STANDING EQUIPMENT).

SYSTEM TYPE	MAIN RATING (AMPERES)	CATALOG NUMBER	LINE PHASE AND NEUTRAL LUG WIRE RANGE FOR AL OR CU CONDUCTORS (FACTORY INSTALLED)	GROUND LUG WIRE RANGE (FACTORY INSTALLED)
3Ø 4W 208Y/120VAC OR 240/120VAC DELTA	800	EZM3800TB	(4) 3/0-500 ▼	(1) #6-300

EZ METER-PAK GANGABLE
 MULTI-METERING EQUIPMENT
 800A 3PH 4W MAIN LUGS TERMINAL BOXES
 OVERHEAD/UNDERGROUND FEED
 RAINPROOF NEMA TYPE 3R ENCLOSURES



DWG# 3148
 NO.