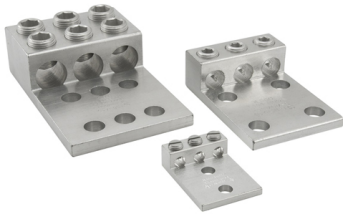


**SKU:** T3A2-350N

**UPC:** 0783669899450

**Features & Benefits:**

**Description:** Aluminum Mechanical Lug, Conductor Range 350-6, 3 Ports, 2 Hole, 1/2in Bolt Size, 1-3/4in Hole Spacing, Tin Plated, UL, CSA



## Specs

### Additional Class Attributes

|                            |            |
|----------------------------|------------|
| Connection                 | Mechanical |
| Contains DE-OX®            | No         |
| Mounting Hole Type         | Thru       |
| Number of Conductors       | 3          |
| Number of Mounting Holes   | 2          |
| Number of Poles            | 1          |
| Number of Ports / Wireways | 3          |

### Dimensions

|                              |              |
|------------------------------|--------------|
| Dimension G (IN)             | 0.625        |
| Drive Size Main              | 5/16         |
| Drive Type Main              | Internal Hex |
| Height (IN)                  | 1.375        |
| Height BX (IN)               | 2.25         |
| Height (mm)                  | 34.925       |
| Length (IN)                  | 4.312        |
| Length (mm)                  | 109.5248     |
| Mounting Bolt/Stud Size (mm) | 304.8        |
| Mounting Hole Diameter (IN)  | 0.563        |
| Mounting Hole Diameter (mm)  | 14.3002      |
| Mounting Hole Spacing (IN)   | 1.75         |
| Mounting Hole Spacing (mm)   | 44.45        |
| Tang Length (IN)             | 3            |
| Tang Length (mm)             | 76.2         |
| Tang Thickness (IN)          | 0.312        |
| Tang Thickness (mm)          | 7.9248       |
| Tang Width (IN)              | 3            |
| Tang Width (mm)              | 76.2         |
| Weight (LB)                  | 0.625        |
| Weight BX (LB)               | 1.525        |
| Width (IN)                   | 3            |
| Width BX (IN)                | 5            |
| Width (mm)                   | 76.2         |

### Material and Finish

|                    |        |
|--------------------|--------|
| Conductor Material | Copper |
| Connector Finish   | Tin    |

|                                |          |
|--------------------------------|----------|
| Insulation                     | NA       |
| Material                       | Aluminum |
| Wire Binding Hardware Finish   | Tin      |
| Wire Binding Hardware Material | Aluminum |

### Additional Technical Specifications

|                |          |
|----------------|----------|
| Conductor Type | Stranded |
|----------------|----------|

### Bolt and Screw Sizes

|  |       |
|--|-------|
| Mounting Bolt/Stud Size                | 1/2   |
| Number of Wire Binding Screws per Port | 1     |
| Wire Binding Screw Size                | 11/16 |
| Wire Binding Torque                    | 275   |

### General

|                             |                |
|-----------------------------|----------------|
| Bag Quantity                | 1              |
| Carton Quantity Description | STD PACK QTY 1 |
| Direct Burial               | No             |
| Dual Rated                  | Yes            |
| NEMA Code                   | S-588-3        |
| UPC Code                    | 78366989945    |

### Testing Standards

|                          |   |
|--------------------------|---|
| CSA File Number          | LR-29601  |
| CSA Standard             | C22.2 No. 65-03   |
| Prop65 Compliance        | This product is in compliance with Prop65. It is not known to contain any chemicals associated with this regulation |
| ROHS Indicator           | IND   |
| UL Control Number        | 453G  |
| UL / CULUS Specification | UL 486A/B Listed  |
| UL File Number           | E6207   |

### Environment and Temperature

|                    |      |
|--------------------|------|
| Temperature Rating | 90°C |
|--------------------|------|

### Color

|       |        |
|-------|--------|
| Color | Silver |
|-------|--------|

### Conductor Ranges

|  |                   |
|--|-------------------|
| Conductor Range AL Solid (Secondary, tap, load)        | NA                |
| Conductor Range AL Stranded (Primary, run, main, line) | 350 kcmil - 6 Str |
| Conductor Range AL Stranded (Secondary, tap, load)     | NA                |
| Conductor Range CU Solid (Primary, run, main, line)    | NA                |
| Conductor Range CU Solid (Secondary, tap, load)        | NA                |
| Conductor Range CU Stranded (Primary, run, main, line) | 350 kcmil - 6 Str |
| Conductor Range CU Stranded (Secondary, tap, load)     | NA                |
| Conductor Range AL Solid (Primary, run, main, line)    | NA                |



**Wire Combinations**

NA

## **Voltage**

**Voltage Rating**

35 kV