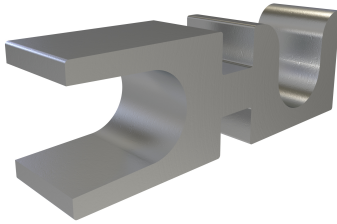


SKU: ASL-250

UPC: 0783669010183

Features & Benefits:

Description: Aluminum Stacking Adapter, Conductor Range 1/0-250, Tin Plated, UL



Specs

Additional Class Attributes

Barrel Marking	Hard
Flared End	No
Mounting Method	Bolted
Number of Mounting Holes	2
Sight Window	No
Slotted	No

Dimensions

Height (IN)	0.75
Height BX (IN)	2.25
Length (IN)	3
Max Insulation OD (IN)	0.868
Weight (LB)	0.1535
Weight BX (LB)	2.435
Width (IN)	1
Width BX (IN)	5

Material and Finish

Conductor Material	Aluminum
Connector Finish Material	Tin
Material	Aluminum

Additional Technical Specifications

Conductor Type	Stranded
----------------	----------

General

Bag Quantity	1
Carton Quantity Description	STD PACK QTY 10
Direct Burial	No
Dual Rated	Yes
NEMA Code	0-000-1
UPC Code	78366901018

Bolt and Screw Sizes

Mounting Bolt/Stud Size	1/2 to 5/8
-------------------------	------------

Testing Standards

CSA File Number	NA
Prop65 Compliance	This product is in compliance with Prop65. It is not known to contain any chemicals associated with this regulation
ROHS Indicator	IND
UL Control Number	453G
UL / CULUS Specification	UL 486A/B Listed
UL File Number	E6207

Environment and Temperature

Temperature Rating	90°C
--------------------	------

Color

Color	Silver
-------	--------

Conductor Ranges

Conductor Range AL Solid (Secondary, tap, load)	NA
Conductor Range AL Stranded (Primary, run, main, line)	250 kcmil - 1/0 Str
Conductor Range AL Stranded (Secondary, tap, load)	NA
Conductor Range CU Solid (Primary, run, main, line)	NA
Conductor Range CU Solid (Secondary, tap, load)	NA
Conductor Range CU Stranded (Primary, run, main, line)	250 kcmil - 1/0 Str
Conductor Range CU Stranded (Secondary, tap, load)	NA
Conductor Range AL Solid (Primary, run, main, line)	NA

Voltage

Voltage Rating	35 kV
----------------	-------