

Rittal – The System.

Faster – better – everywhere.



DK 7507.100 FlatBox

State: 9/22/2025 (Source: rittal.com/us-en)

ENCLOSURES

POWER DISTRIBUTION

CLIMATE CONTROL

IT INFRASTRUCTURE

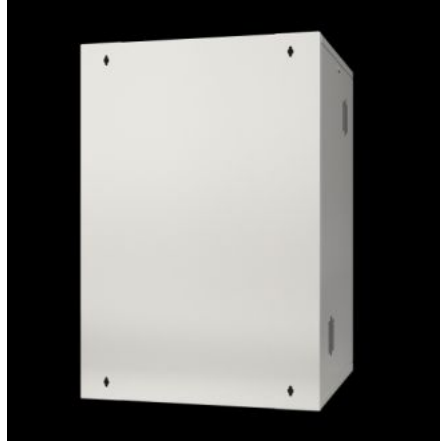
SOFTWARE & SERVICES

FRIEDHELM LOH GROUP



DK 7507.100 - FlatBox

Flat-packed enclosure. For optimal access and flexible use as a wall-mounted or floor-standing enclosure.



Features

| | |
|---------------------|--|
| Model No. | DK 7507.100 |
| Version | with 19" mounting rails |
| Product description | For flexible use as a wall-mounted or floor-standing enclosure. |
| Benefits | Tool-free quick mounting System accessories on the open 19" frame |
| Material | Carbon steel Viewing window: Single-pane safety glass, 3 mm |
| Surface finish | Powder-coated |
| Color | RAL 7035 |

Features

| | |
|-------------------------------------|--|
| Supply includes | Flat-packed enclosure 1 wall section 2 basic supports 2 roof/base plates, with cut-outs for cable entry via brush strips 2 side panels, lockable 1 glazed door, lockable, security lock 3524 E, door catch freely selectable Connection components for tool-free, fast assembly Grounding kit for system-compatible grounding of all enclosure parts 19" profile rails |
| Height units | 6 U |
| Dimensions | Width: 600 mm Height: 358 mm Depth: 600 mm Width: 23.6 " Height: 14.1 " Depth: 23.6 " |
| Installation height for components | 6 U |
| Load capacity | max. 300 N |
| Note | Max. installation depth: Depth - 58 mm to rear panel Max. distance between two 19" levels: Depth - 104 mm The door opening angle is max. 210° |
| Base material | Carbon steel |
| Packaging unit | 1 pc(s). |
| Net weight | 22.5 |
| Gross weight | 23 |
| PCF/VE (cradle-to-gate) | 91.4 kg CO2 eq (Cat B) |
| Information regarding the PCF class | Category B: PCF value (cradle-to-gate) calculated approximately on the basis of the product weight and self-declared |
| Customs tariff number | 94032080 |
| EAN | 4028177551435 |
| E-Number Sweden | E7239531 |

Features

| | |
|------------|----------|
| ETIM 9 | EC002500 |
| ETIM 8 | EC002500 |
| ECLASS 8.0 | 27180208 |

Approvals

| | |
|--------------|----------------------------|
| Explanations | Manufacturer's declaration |
|--------------|----------------------------|