



T8

12.5T8/COR/48-840/FF18/G/DIM 25/1

Our TLEDs are available in InstantFit (Type A / Type C) or MainsFit (Ballast bypass / Type B) versions. The InstantFit lamps work on a broad variety of ballasts and LED drivers. Only InstantFit has over 15,000 lamp & ballast combinations delivering even light output, energy savings and a long lifetime. Our MainsFit products feature a double-ended design, simplifying installation while a proprietary safety circuit minimizes a shock risk. Lamp sizes range from 2-foot to 8-foot and U-bend with a variety of lumen outputs.

Product data

General information		Power (Nom)	
Cap-Base	G13 [Medium Bi-Pin Fluorescent]		12.5 13 W
EU RoHS compliant	Yes	Lamp Current (Max)	110 mA
Nominal Lifetime (Nom)	50000 h	Lamp Current (Min)	45 mA
Switching Cycle	50000X	Starting Time (Nom)	0.5 s
Technical Type	12.5;13-32W	Warm Up Time to 60% Light (Nom)	0.5 s
Light technical		UL Type	Type A+B - works with or without a ballast
Color Code	840 [CCT of 4000K]	Power Factor (Nom)	0.9
Beam Angle (Nom)	240 °	Voltage (Nom)	120-277 V
Luminous Flux (Nom)	1800 lm	Temperature	
Color Designation	Cool White (CW)	T-Ambient (Max)	45 °C
Correlated Color Temperature (Nom)	4000 K	T-Ambient (Min)	-20 °C
Luminous Efficacy (rated) (Nom)	144.00 lm/W	T-Storage (Max)	65 °C
Color Consistency	<6	T-Storage (Min)	-40 °C
Color Rendering Index (Nom)	82	T-Case Maximum (Nom)	60 °C
LLMF At End Of Nominal Lifetime (Nom)	70 %	Controls and dimming	
Operating and electrical		Dimmable	No
Input Frequency	50 to 60 Hz		

T8

Mechanical and housing

Bulb Finish	Frosted
Bulb Material	Glass
Product Length	1200 mm
Bulb Shape	Tube, double-ended

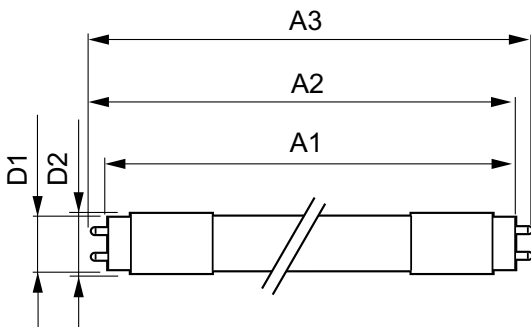
Approval and application

Energy Saving Product	Yes
Approval Marks	RoHS compliance UL certificate DLC compliance

Product data

Order product name	12.5T8/COR/48-840/FF18/G/DIM 25/1
EAN/UPC - Product	046677600181
Order code	929002317304
Numerator - Quantity Per Pack	1
Numerator - Packs per outer box	25
Material Nr. (12NC)	929002317304
Net Weight (Piece)	0.180 kg

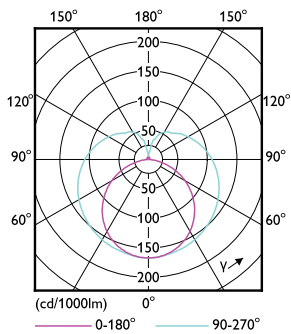
Dimensional drawing



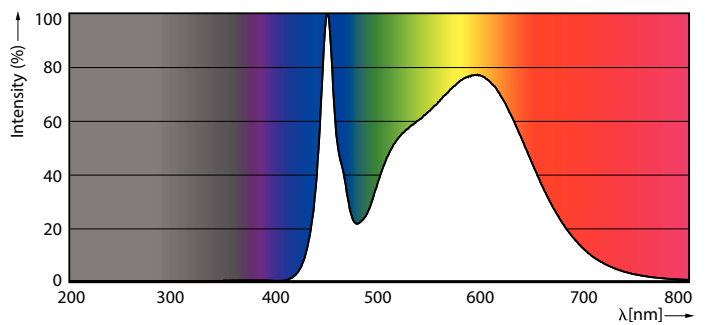
12.5T8/COR/48-840/FF18/G/DIM 25/1

Product	D1	D2	A1	A2	A3
12.5T8/COR/48-840/FF18/G/DIM 25/1	25.7 mm	28 mm	1198.2 mm	1205.3 mm	1212.4 mm

Photometric data

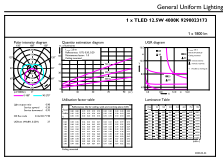


LEDtube COR 12,5W G13



LEDtube COR 12,5W G13 1800lm 840

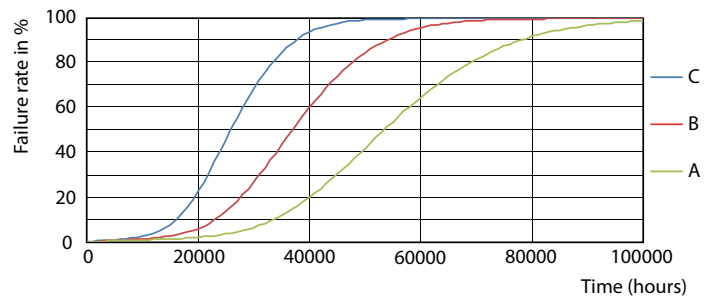
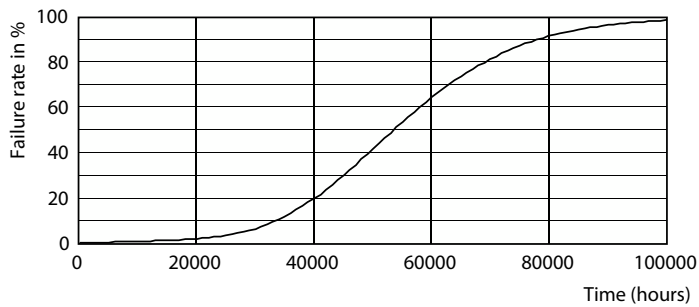
Photometric data



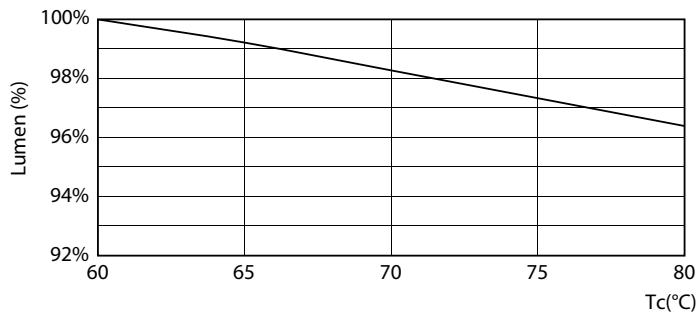
© 2021 Philips Lighting B.V. Page 11

LEDtube COR 12,5W G13 1800lm 840

Lifetime

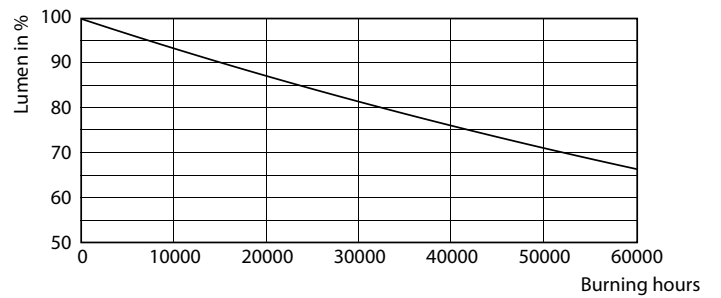


Life Expectancy Diagram



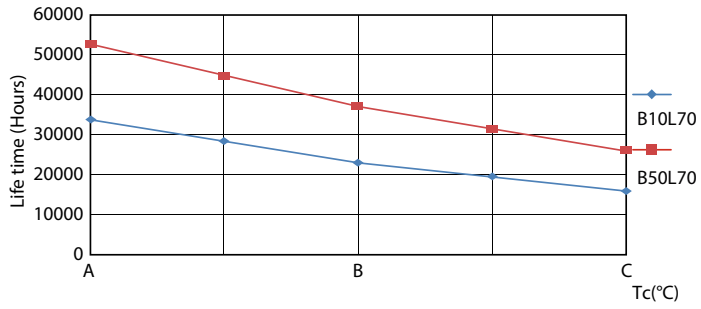
LEDtube 12,5W 50K 1 LumenVsTc

LEDtube 50K FailureRate-LED



Lumen Maintenance Diagram

Lifetime



LEDtube 50K LifetimeVsTc-LED

