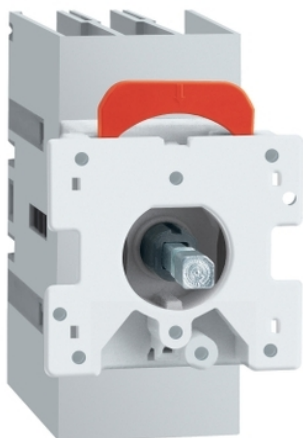


VLS3P032D1

Disconnect switch, TeSys VLS, body switch, 32A, 20HP at 480VAC, UL508, three phase, 5kA SCCR, size 1, door mount



Main

Range	TeSys
Product Name	TeSys VARIO LS
Device Short Name	VLS3P
Product Type	Switch body

Complementary

Mounting Support	Door
Performance Level	High performance
Number of Poles	3P
Contact Type and Composition	3 NO
Color	Gray
[Ue] UL Rated Operational Voltage	600 V AC 50/60 Hz UL 508
Network type	AC
Network frequency	50/60 Hz
UL Maxium Horsepower Ratings	10 Hp 200/208 V AC 10 Hp 240 V AC 20 Hp 480 V AC 20 Hp 600 V AC 2 Hp 120 V AC 5 hp 240 V AC
[Ue] IEC Rated Operational Voltage	690 V AC 50/60 Hz
IEC Rated Operational Power in W	15 KW 400 V AC-23A) 18.5 KW 500 V AC-23A) 22 kW 690 V AC-23A)
[Ie] Rated Operational Current	32 A Ue: 600 V UL 508 32 A AC-21A Ue: 400 V 32 A AC-21A Ue: 500 V 32 A AC-21A Ue: 690 V 32 A AC-22A Ue: 400 V 32 A AC-22A Ue: 500 V 32 A AC-22A Ue: 690 V 32 A AC-23A Ue: 400 V 25 A AC-23A Ue: 500 V 25 A AC-23A Ue: 690 V
[Ith] Conventional Free Air Thermal Current	32 A 131 °F (55 °C)
[Ithe] Conventional Enclosed Thermal Current	32 A
Making capacity (I Rms)	320 A 690 V AC-23A 48 A 690 V AC-21A 96 A 690 V AC-22A
Breaking Capacity	48 A 690 V AC-21A) 96 A 690 V AC-22A) 256 A 690 V AC-23A)
SCCR	Fuse RK5 45 A maximum: 5 kA at 600 V AC
Rated Conditional Short Circuit Current	50 kA 400 V 32 A gG
[Icm] Rated Short Circuit Making Capacity	1128 A 690 V

The information provided in this documentation contains general descriptions and/or technical characteristics of the performance of the products contained herein. This documentation is not intended as a substitute for and is not to be used for determining suitability or reliability of these products for specific user applications. It is the duty of any such user or integrator to perform the appropriate and complete risk analysis, evaluation and testing of the products with respect to the relevant specific application or use thereof. Neither Schneider Electric Industries SAS nor any of its affiliates or subsidiaries shall be responsible or liable for misuse of the information contained herein.

Intermittent duty class	Class 120 - 60 %
[Uimp] rated impulse withstand voltage	8 kV
[Icw] rated short-time withstand Rms current	800 A 690 V 1 s
Mechanical Durability	100000 cycles
Electrical Durability	100000 cycles AC-21A
UL Wire Size	AWG 18...AWG 6 copper
IEC Terminal Connection	Power circuit screw clamp terminals 0.02 in ² (10 mm ²) solid Power circuit screw clamp terminals 0.02 in ² (16 mm ²) flexible - without cable end
Tightening Torque	Power circuit 15.93...17.70 lbf.in (1.8...2 N.m) screw clamp terminals
Height	2.87 in (73 mm)
Width	1.77 in (45 mm)
Depth	3.07 in (78 mm)
Product Weight	0.30 lb(US) (0.135 kg)

Environment

Standards	UL 508 CSA C22.2 No 14 IEC 60947-3
Product Certifications	CULus GL
Degree of Protection	IP20 conforming to IEC 60529
Mechanical Robustness	Vibrations 2...100 Hz Fc 0.7 g) IEC 60068-2-6 Shocks 11 ms Ea 15 gn) IEC 60068-2-27
Ambient Air Temperature for Operation	-13...131 °F (-25...55 °C)
Fire Resistance	1760 °F (960 °C) IEC 60695-2-11





Ordering and shipping details

Category	21734-TESYS VLS DISCONNECT SWITCHES
Discount Schedule	CP1
GTIN	3606481156532
Nbr. of units in pkg.	1
Package weight(Lbs)	6.81 oz (193.0 g)
Returnability	Yes
Country of origin	IT

Packing Units

Unit Type of Package 1	PCE
Package 1 Height	3.15 in (8 cm)
Package 1 width	3.35 in (8.5 cm)
Package 1 Length	4.72 in (12 cm)
Unit Type of Package 2	S03
Number of Units in Package 2	27
Package 2 Weight	13.06 lb(US) (5.924 kg)
Package 2 Height	11.81 in (30 cm)
Package 2 width	11.81 in (30 cm)
Package 2 Length	15.75 in (40 cm)

Offer Sustainability

REACH Regulation	 REACH Declaration
REACH free of SVHC	Yes
EU RoHS Directive	Compliant  EU RoHS Declaration
Toxic heavy metal free	Yes
Mercury free	Yes
RoHS exemption information	 Yes
China RoHS Regulation	 China RoHS Declaration