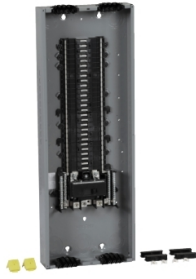


Product data sheet

Specifications

SQUARE D



Load center, QO, 1 phase, 54 spaces, 64 circuits, 200A convertible main breaker, PoN, NEMA1, Qwik-grip

QQ154M200PQ

! Discontinued

! Discontinued on: Jun 30, 2023

Product availability: Stock - Normally stocked in distribution facility

Main

Marketing Trade Name	QO
Product Type	Load Center
Provided Equipment	Qwik grip assembly kit 1)

Complementary

Tightening Torque	Cover 20 lb.in
PoN Convertible Mains (lugs)	PoN Convertible Mains (breaker)
Rated Current	200 A
Number of Spaces	54
Maximum Number of Single Pole Circuits	64
Maximum Number of Tandem Breakers	10
Number of Phases	1 phase
Ground Bar	Grounding bar (ordered separately)
Height	39.4 in (1000 mm)
Width	14.3 in (362 mm)
Depth	3.7 in (95 mm)

Environment

Enclosure Rating	NEMA 1 indoor enclosure
Ambient Air Temperature for Operation	23 °F (-5 °C) 104 °F (40 °C)
Product Certifications	UL Listed

Ordering and shipping details

Category	US1DE3A10001
Discount Schedule	DE3A
GTIN	785901912743
Returnability	Yes
Country of origin	US

Price is "List Price" and may be subject to a trade discount – check with your local distributor or retailer for actual price.

Packing Units

Unit Type of Package 1	PCE
Number of Units in Package 1	1
Package 1 Height	3.74 in (9.5 cm)
Package 1 Width	14.25 in (36.2 cm)
Package 1 Length	39.37 in (100 cm)
Package 1 Weight	24.000 lb(US) (10.886 kg)
Unit Type of Package 2	PAL
Number of Units in Package 2	27
Package 2 Height	45.50 in (115.57 cm)
Package 2 Width	40.00 in (101.6 cm)
Package 2 Length	48.00 in (121.92 cm)
Package 2 Weight	686.617 lb(US) (311.444 kg)

Environmental Data

Schneider Electric aims to achieve Net Zero status by 2050 through supply chain partnerships, lower impact materials, and circularity via our ongoing "Use Better, Use Longer, Use Again" campaign to extend product lifetimes and recyclability.

[Environmental Data explained >](#)

[How we assess product sustainability >](#)

Environmental footprint

[Environmental Disclosure](#)

[Product Environmental Profile](#)

Use Better

Materials and Substances

Packaging made with recycled cardboard

No

Packaging without single use plastic

No

[EU RoHS Directive](#)

Compliant with Exemptions

REACH Regulation

[REACH Declaration](#)

California proposition 65

WARNING: This product can expose you to chemicals including: Lead and lead compounds, which is known to the State of California to cause cancer and birth defects or other reproductive harm. For more information go to www.P65Warnings.ca.gov

Use Again

Repack and remanufacture

Circularity Profile

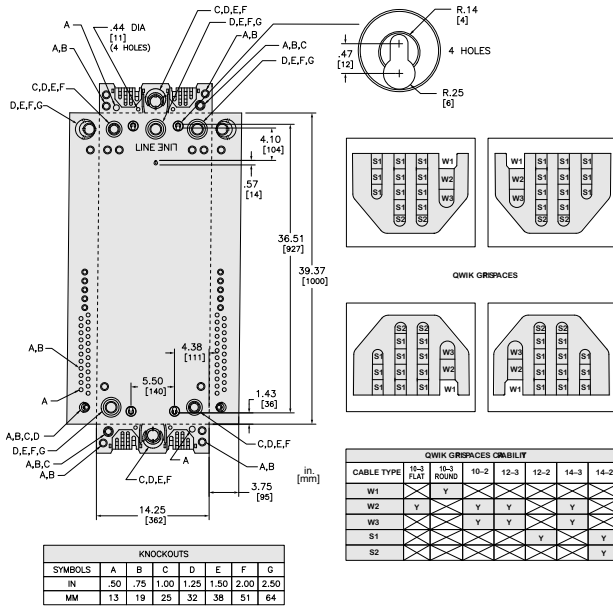
No need of specific recycling operations

Take-back

No

Technical Illustration

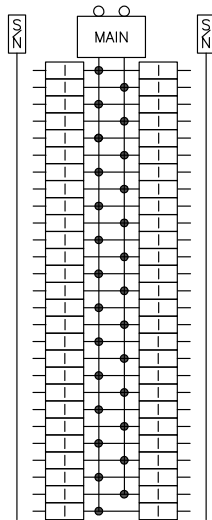
Dimensions



All dimensions are approximate. See technical drawings and documentation for complete information.

Technical Illustration

Wiring diagram



QO154M200PQ



TANDEM BREAKERS –
ANY 10 POSITIONS (MAX)