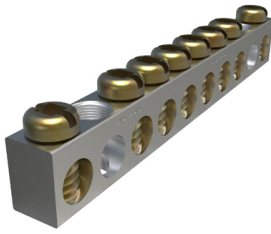


SKU: NBAS-008-2-A

UPC: 0783669005578

Features & Benefits:

Description: Aluminum Neutral Bar, Dual Rated, Conductor Range 4-14, 8 Ports, 2 Holes, #10 Bolt, Headed Slot Drive, UL, CSA



Specs

Additional Class Attributes

Connection	Mechanical
Mounting Hole Type	Thru
Number of Conductors	8
Number of Mounting Holes	2
Number of Poles	1
Number of Ports / Wireways	10
Number of Usable Ports	8
Type of Accessory	NBST-2/0

Dimensions

Dimension G (IN)	0.492
Dimension G (mm)	12.4968
Drive Size Main	NA
Drive Type Main	Slotted
Height (IN)	0.622
Height BX (IN)	1.9
Height (mm)	15.7988
Length (IN)	3.168
Mounting Bolt/Stud Size (mm)	254
Mounting Hole Diameter (IN)	0.203
Mounting Hole Position (IN)	2 & 9
Mounting Hole Spacing (IN)	2.184
Mounting Hole Spacing (mm)	55.4736
Weight (LB)	0.067
Weight BX (LB)	1.455
Width (IN)	0.312
Width BX (IN)	4

Material and Finish

Conductor Material	Aluminum
Connector Finish	Tin
Insulation	NA
Material	Aluminum
Wire Binding Hardware Finish	Yellow Zinc Chromate
Wire Binding Hardware Material	Steel

Additional Technical Specifications

Conductor Type	Solid
----------------	-------

Bolt and Screw Sizes

Mounting Bolt/Stud Size	#10
Number of Wire Binding Screws per Port	1
Wire Binding Screw Size	1/4

General

Bag Quantity	1
Carton Quantity Description	STD PACK QTY 15
Dual Rated	Yes
NEMA Code	S-588-3
UPC Code	78366900557

Testing Standards

CSA File Number	LR-29601
CSA Standard	C22.2 No. 65-03
Prop65 Compliance	This product is in compliance with Prop65. It is not known to contain any chemicals associated with this regulation
ROHS Indicator	IND
UL Control Number	NA
UL / CULUS Specification	UL 467 Listed
UL File Number	E6207

Color

Color	Silver
-------	--------

Conductor Ranges

Conductor Range AL Solid (Secondary, tap, load)	NA
Conductor Range AL Stranded (Primary, run, main, line)	4 Str - 14 Str
Conductor Range AL Stranded (Secondary, tap, load)	NA
Conductor Range CU Solid (Primary, run, main, line)	10 Sol - 14 Sol
Conductor Range CU Solid (Secondary, tap, load)	NA
Conductor Range CU Stranded (Primary, run, main, line)	4 Str - 14 Str
Conductor Range CU Stranded (Secondary, tap, load)	NA
Conductor Range AL Solid (Primary, run, main, line)	10 Sol - 14 Sol

Voltage

Voltage Rating	35 kV
----------------	-------