

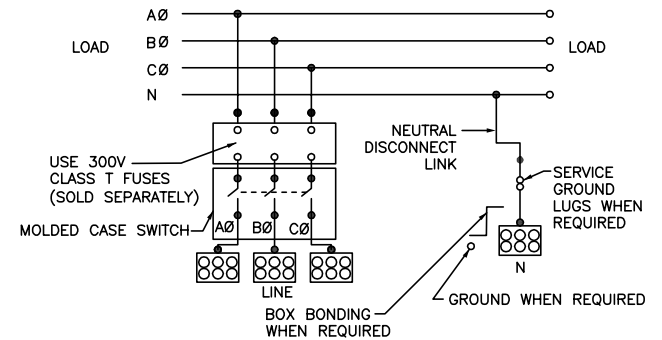
ADDITIONAL NOTES:
WHEN USED AS SERVICE EQUIPMENT, INSTALL BONDING STRAP AND REINSTALL GROUND LUG WHERE APPROPRIATE.

● HANDLE EXTENSION AVAILABLE M-FRAME BREAKER ORDER KIT 33195.

▲ THIS LUG IS AVAILABLE FROM SQUARE D. ORDER CATALOG NUMBER CMEK4, KIT INCLUDES 4 LUGS.

± INDICATED VERSA-CRIMP CRIMPING TOOL.

KNOCKOUTS		
SYMBOL	CONDUIT SIZE	
	IN	MM
A	.50	13
B	.75	19
E	1.50	38
F	2.00	51
G	2.50	64
H	3.00	76
I	3.50	89
J	4.00	102



DUAL DIMENSIONS: INCHES MILLIMETERS

CATALOG NUMBER	ALTERNATE LUG QUANTITY PER LINE SIDE PHASE AND NEUTRAL TERMINALS (ORDER SEPARATELY)							
	ANDERSON				ILSCO		CMC	
	VHCL-600-12BN	VHCL-750-12BN	LID2-600	2ACL-600	TA-600-2N▲	AJ-600-2N (2-BARREL)	A1B2-600-2	2AB2-600 (2-BARREL)
	250-600 CU	500-750 CU	#2-600 AL/CU	250-600 AL/CU	#2-600 AL/CU	(2)#2-600 AL/CU	#2-600 AL/CU	(2)#2-600 AL/CU
	VC-6±	VC-7±	MECH	IDT-12	MECH	MECH	MECH	MECH
EZM3600FSU	2	2	2	2	2	1	2	1
EZM3800FSU	2	2	2	2	2	1	2	1

SYSTEM TYPE	MAIN RATING (AMPERES)	CATALOG NUMBER *	MOLDED CASE SWITCH (FACTORY INSTALLED)	PROVISIONS TO MOUNT 300V CLASS T FUSES (ORDER SEPARATELY) FUSE RANGE AVAILABLE	LINE PHASE AND NEUTRAL LUG LANDING PADS PROVIDED FOR USE WITH CRIMP-TYPE LUGS(2-HOLE MOUNTING) QUANTITY OF LUGS PER PAD	GROUND LUG WIRE RANGE (FACTORY INSTALLED)
3Ø 4W 208Y/240VAC OR 240/120VAC DELTA	600	EZM3600FSU	MJF32000Z60 (100kA) ●	450-600A	2 (ORDER LUGS SEPARATELY)	(1) #6-300
	800	EZM3800FSU	MJF32000Z80 (100kA) ●	601-800A	2 (ORDER LUGS SEPARATELY)	(1) #6-300

FUSES NOT INCLUDED, ORDER 300V CLASS T FUSES 100KA SCCR (INTERRUPTING RATING RMS SYMMETRICAL)

NOTES:
FINISH - GRAY BAKED ENAMEL POWDER COAT PAINT OVER CLEANED GALVANNEALED STEEL.
UL LISTED - FILE E-10582, VOL. M, E-131840, VOL. M
SUITABLE FOR USE AS SERVICE EQUIPMENT.
MAIN HORIZONTAL CROSS BUS RATED AT 800 AMPERES (ALUMINUM 1/4 X 1 3/4 INCHES TWO LAMINATIONS).
MAIN DEVICES ARE SEALABLE BY UTILITY.
GANGABLE MULTI-METERING EQUIPMENT IS DESIGNED FOR WALL MOUNTING ONLY.
(NOT SUITABLE FOR FLOOR STANDING EQUIPMENT.)
*MEETS EUSERC STANDARDS FOR WEST COAST BASED UTILITIES. DRAWING 315

EZ METER-PAK GANGABLE
MULTI-METERING EQUIPMENT
2000A 1PH 3W MAIN CIRCUIT BREAKER DEVICE W/ERMS
OVERHEAD/UNDERGROUND FEED
RAINFOOF TYPE 3R ENCLOSURES



DWG# PWFDS-SYRS-0172
No.

EZM3600FSU_EZM3800FSU