

JUNO®

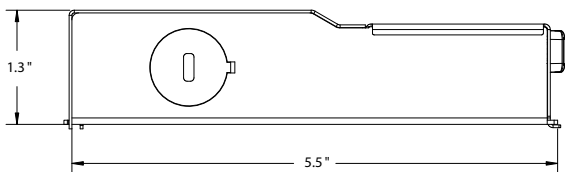
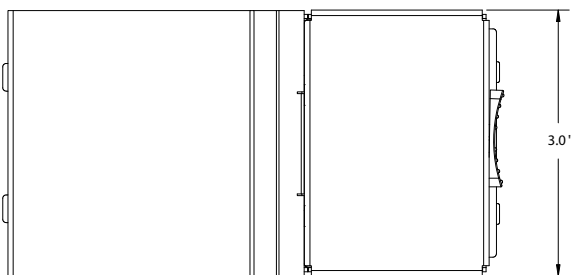
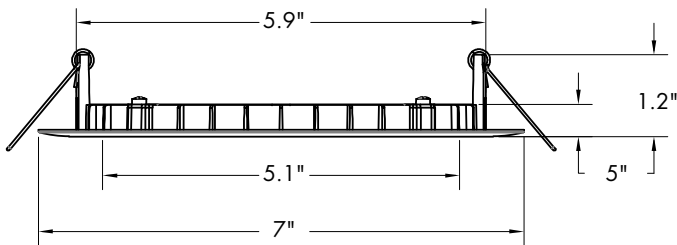
Juno Wafer™ LED Downlight Series

6" LED Ultra-Thin Wafer Switchable Downlight
970 Lumen

WF6 SWW5 Series



Dimensions



Project:

Fixture Type:

Location:

Contact/Phone:

Product Features

The 6" round smooth with 5CCT Switchable White technology provides high-quality light output and efficiency featuring a switch for easy color temperature adjustment to choose between 2700K, 3000K, 3500K, 4000K, or 5000K - while eliminating the need for recessed housings.

- Round smooth lens trim designed to distribute precise even illumination for general purpose areas
- Canless - no can required; equals easy to install and less labor
- 5 selectable color temperatures to choose with a switch ranging from warm (2700K) to daylight (5000K) allowing customization for endless applications

Applications

- Residential and light commercial applications including multi-family, hotels, assisted living, dormitories and other multi-level construction
- Shallow slim profile allows for easy remodel or new construction insulated and drop ceiling installations
- Wet rated and airtight: perfect for showers, bathrooms, and outdoor soffits

Performance

Delivered Lumens	970L Nominal at 3000K
LED Color Temperature	Switchable White (27K, 30K, 35K, 40K, 50K) Default set at 3000K
CRI	90+
Voltage	Dedicated 120V
Dimming	Dimmable to 10% only with triac dimmers.

For a list of compatible dimmers see JUNO-WAFERS-DIM

Specifications

Aperture:	5.1"
Ceiling opening:	6.25"
Overlap trim:	7"
Height:	1.2"



Juno Wafer™ LED Downlight Series

6" LED Ultra-Thin Wafer Switchable Downlight
970 Lumen



ORDERING INFORMATION

Downlight

Example: WF6 SWW5 90CRI MW M6

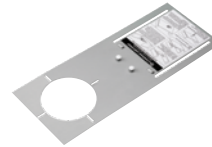
Series	Trim Style	Color Temperature	Rendering Index	Finish
WF6 6" Wafer-Thin LED Downlight	(BLANK) Round	SWW5 Switchable White (2700K, 3000K, 3500K, 4000K, 5000K)	90CRI 90+ CRI	MB Matte White MB Matte Black

Accessories: Order as separate catalog number.

Series	Description
WF8643 PAN U	Universal New Construction Pan
WF6 PAN R12	6" new construction pan, retail pack of 12
WF6GR MW JZ	6" Goof Ring
WFJB U	Remodel Joist Bar
WFEXC6 SW3PIN FT4	3-Pin 6ft Cable
WFEXC10 SW3PIN FT4	3-Pin 10ft Cable
WFEXC20 SW3PIN FT4	3-Pin 20ft Cable



WF8643 UNIVERSAL
New Construction Pan



WF6 PAN
6" New Construction Pan



Remodel Joist Bar



WFEXC6
Cable

PERFORMANCE DATA

	WF6 SWW5
Input Voltage	120V
Input Power Typical	13W (+/-5%)
Frequency	60 Hz
EMI/RFI	FCC Title 47, Part 15 Class B (consumer)
Minimum Starting Temp	-40°F (-40°C)

Note: Actual performance may differ as a result of end-user environment and application. All values are design or typical values, measured under laboratory conditions at 25°C.

LIGHTING PERFORMANCE DATA DONNÉES SUR LE RENDEMENT DE L'ÉCLAIRAGE	
Light Appearance (CCT) Aspect de la lumière (CCT)	
2700K soft white blanc doux	955 lumens 73 lumens per watt
3000K warm white blanc chaud	970 lumens 74 lumens per watt
3500K neutral white blanc neutre	990 lumens 76 lumens per watt
4000K cool white blanc froid	1000 lumens 76 lumens per watt
5000K daylight blanc neutre	1005 lumens 77 lumens per watt
Watts	13
Color Accuracy (CRI) Précision des couleurs (CRI)	90



Juno Wafer™ LED Downlight Series

6" LED Ultra-Thin Wafer Switchable Downlight 970 Lumen



Specifications

Housing

Polycarbonate injection molded outer frame, with steel back plate. Non-conductive dead-front trim design suitable for a wide range of applications and codes requiring a non-conductive lens • FT4 3-pin plenum rated cable connector to connect from module to remote driver box. • Steel spring clip for easy installation. 6" cut out template is provided to ensure a correct sized hole is cut into ceiling for proper installation of the trim. Size of hole should not exceed 6 ¼ inches for this product. Can be installed from 3/8" to 1 ½" ceiling thickness • Can be removed from below the ceiling for service or replacement

LED Light Engine

Switchable white color temperature from 2700K, 3000K, 3500K, 4000K, 5000K • 90 CRI minimum • Color accuracy within 4 step McAdams Ellipse at the end CCT (2700K and 5000K), within 6 step McAdams Ellipse in the middle CCT (3000K, 3500K, and 4000K) • Dimming 100% to 10% with most standard incandescent dimers (see list of approved dimmers).

Driver

Connect directly to 120V Class-2 (CAN ICES-005 (B) / NMB-005 (B)) LED driver. 120V 60 Hz constant current driver provides noise free operation • IC rated driver with convenience of a switch to choose between 5 selectable color temperature options ranging from 2700K (warm white), 3000K, 3500K, 4000K, or 5000K (daylight) • The isolated driver integrated inside steel remote box with four 7/8" knockouts with slots for pryout. Suitable for pulling wires with the 12 cubic-inch wiring compartment to accommodate up to (6) 14 gauge insulated conductors; making the Wafer LED Downlights much easier to wire in 2in/2out (plus ground) daisy-chain applications and contractor friendly • 2" plenum space required for installation of the remote driver box.

Optical System

Edge-lit LED technology uses light guided plate to distribute light • Polycarbonate lens provides even illumination throughout the space • Efficient system that can produce over 970 lumens while using 13W • Replaces 75W incandescent.

Life

Rated for 50,000 hours at 70% lumen maintenance.

Labels

CSA certified to US and Canadian safety standards • ENERGY STAR® certified product • Suitable for wet location • Air-Loc certified in accordance with ASTM E283-2004 • NOM Certified • Can be used to comply with California Title 24 Part 6 High Efficacy LED light Source Requirements. †IP5X Rated, product is protected against dust. U.S. Patent No. 10,681,784.

Testing

All reports are based on published industry procedures; field performance may differ from laboratory performance.

Warranty 3-year limited warranty. Complete warranty terms located at: www.acuitybrands.com/CustomerResources/Terms_and_conditions.aspx

Specifications subject to change without notice.



Juno Wafer™ LED Downlight Series

6" LED Ultra-Thin Wafer Switchable Downlight

970 Lumen



PHOTOMETRICS

Distribution Curve

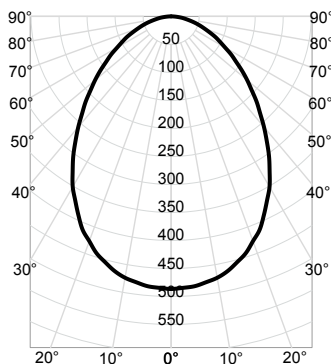
Distribution Data

Output Data

Coefficient of Utilization

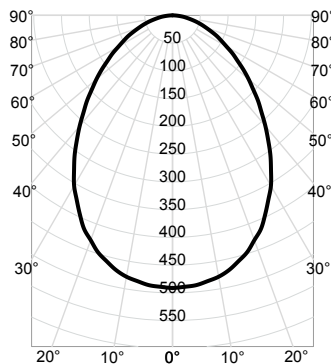
Illuminance Data at 30" Above Floor for a Single Luminaire

WF6 SWW5 90CRI _ 2700K Input Watts: 13.1, Delivered Lumens: 955, LPW: 72.9, S/MH: 1.09, Test No: ISF 202630P6



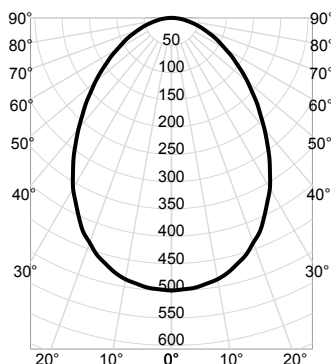
CP Summary	Zonal Lumen Summary				Coefficients of Utilization												Cone of Light			Luminance (cd/sq.m)	
	0°	Zone	Lumens	% Fixture	pw	80%				70%				50%				Mounting Height	Initial FC Center Beam	Beam Diameter	Average Luminance
						50%	30%	10%	50%	30%	10%	50%	30%	10%							
0°	487	0° - 30°	346	36%	0	119	119	119	116	116	116	111	111	111	6.0	13.5	10.7	0°	61,247		
5°	483	0° - 40°	527	55%	1	106	102	98	104	100	97	99	96	94	8.0	7.6	14.2	45°	38,433		
15°	454	0° - 60°	810	85%	2	94	88	82	92	86	81	88	84	80	10.0	4.9	17.8	55°	31,115		
25°	392	0° - 90°	955	100%	3	84	76	70	82	75	70	79	73	68	12.0	3.4	21.3	65°	25,913		
35°	305	90° - 180°	0	0%	4	75	67	61	74	66	60	71	65	60	14.0	2.5	24.9	75°	21,157		
45°	216	0° - 180°	955	100%	5	68	60	53	67	59	53	65	58	53				85°	16,288		
55°	142				6	62	53	47	61	53	47	59	52	47	Beam Angle: 83.2°						
65°	87				7	57	48	43	56	48	42	54	47	42	Field Angle: 147.3°						
75°	44				8	52	44	39	51	44	38	50	43	38							
85°	11				9	48	40	35	48	40	35	46	40	35							
90°	0				10	45	37	32	44	37	32	43	37	32							

WF6 SWW5 90CRI _ 3000K Input Watts: 13.1, Delivered Lumens: 964, LPW: 73.6, S/MH: 1.09, Test No: ISF 202630P7



CP Summary	Zonal Lumen Summary				Coefficients of Utilization												Cone of Light			Luminance (cd/sq.m)	
	0°	Zone	Lumens	% Fixture	pw	80%				70%				50%				Mounting Height	Initial FC Center Beam	Beam Diameter	Average Luminance
						50%	30%	10%	50%	30%	10%	50%	30%	10%							
0°	491	0° - 30°	350	36%	0	119	119	119	116	116	116	111	111	111	6.0	13.6	10.7	0°	61,825		
5°	488	0° - 40°	531	55%	1	106	102	98	104	100	97	99	96	94	8.0	7.7	14.2	45°	38,795		
15°	459	0° - 60°	817	85%	2	94	88	82	92	86	81	88	84	80	10.0	4.9	17.8	55°	31,409		
25°	395	0° - 90°	964	100%	3	84	76	70	82	75	70	79	73	68	12.0	3.4	21.3	65°	26,158		
35°	307	90° - 180°	0	0%	4	75	67	61	74	66	60	71	65	60	14.0	2.5	24.9	75°	21,356		
45°	218	0° - 180°	964	100%	5	68	60	53	67	59	53	65	58	53				85°	16,442		
55°	143				6	62	53	47	61	53	47	59	52	47	Beam Angle: 83.2°						
65°	88				7	57	48	43	56	48	42	54	47	42	Field Angle: 147.3°						
75°	44				8	52	44	39	51	44	38	50	43	38							
85°	11				9	48	40	35	48	40	35	46	40	35							
90°	0				10	45	37	32	44	37	32	43	37	32							

WF6 SWW5 90CRI _ 3500K Input Watts: 13.1, Delivered Lumens: 980, LPW: 74.8, S/MH: 1.09, Test No: ISF 202630P8



CP Summary	Zonal Lumen Summary				Coefficients of Utilization												Cone of Light			Luminance (cd/sq.m)	
	0°	Zone	Lumens	% Fixture	pw	80%				70%				50%				Mounting Height	Initial FC Center Beam	Beam Diameter	Average Luminance
						50%	30%	10%	50%	30%	10%	50%	30%	10%							
0°	499	0° - 30°	355	36%	0	119	119	119	116	116	116	111	111	111	6.0	13.9	10.7	0°	62,852		
5°	496	0° - 40°	540	55%	1	106	102	98	104	100	97	99	96	94	8.0	7.8	14.2	45°	39,440		
15°	466	0° - 60°	831	85%	2	94	88	82	92	86	81	88	84	80	10.0	5.0	17.8	55°	31,930		
25°	402	0° - 90°	980	100%	3	84	76	70	82	75	70	79	73	68	12.0	3.5	21.3	65°	26,592		
35°	313	90° - 180°	0	0%	4	75	67	61	74	66	60	71	65	60	14.0	2.5	24.9	75°	21,711		
45°	222	0° - 180°	980	100%	5	68	60	53	67	59	53	65	58	53				85°	16,715		
55°	146				6	62	53	47	61	53	47	59	52	47	Beam Angle: 83.2°						
65°	89				7	57	48	43	56	48	42	54	47	42	Field Angle: 147.3°						
75°	45				8	52	44	39	51	44	38	50	43	38							
85°	12				9	48	40	35	48	40	35	46	40	35							
90°	0				10	45	37	32	44	37	32	43	37	32							



Juno Wafer™ LED Downlight Series

6" LED Ultra-Thin Wafer Switchable Downlight

970 Lumen



PHOTOMETRICS

Distribution Curve

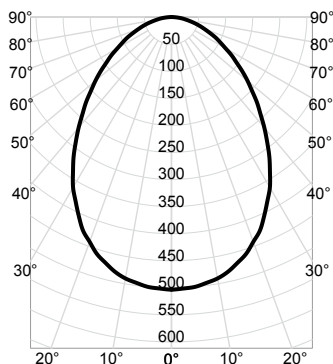
Distribution Data

Output Data

Coefficient of Utilization

Illuminance Data at 30" Above Floor for a Single Luminaire

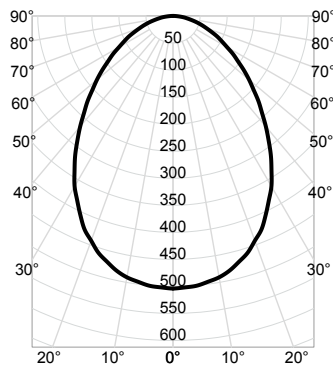
WF6 SWW5 90CRI _ 4000K Input Watts: 13.1, Delivered Lumens: 988, LPW: 75.4, S/MH: 1.09, Test No: ISF 202630P9



CP Summary		Zonal Lumen Summary				Coefficients of Utilization										Cone of Light			Luminance (cd/sq.m)	
0°	Zone	Lumens	% Fixture	pf	80%		20%		70%		50%		Mounting Height	Initial FC Center Beam	Beam Diameter	0°	Average Luminance			
				pc	50%	30%	10%	50%	30%	10%	50%	30%						10%		
0°	504	0° - 30°	358	36%	0	119	119	119	116	116	116	111	111	111	6.0	14.0	10.7	0°	63,366	
5°	500	0° - 40°	545	55%	1	106	102	98	104	100	97	99	96	94	8.0	7.9	14.2	45°	39,762	
15°	470	0° - 60°	838	85%	2	94	88	82	92	86	81	88	84	80	10.0	5.0	17.8	55°	32,191	
25°	405	0° - 90°	988	100%	3	84	76	70	82	75	70	79	73	68	12.0	3.5	21.3	65°	26,810	
35°	315	90° - 180°	0	0%	4	75	67	61	74	66	60	71	65	60	14.0	2.6	24.9	75°	21,888	
45°	223	0° - 180°	988	100%	5	68	60	53	67	59	53	65	58	53				85°	16,852	
55°	147				6	62	53	47	61	53	47	59	52	47						
65°	90				7	57	48	43	56	48	42	54	47	42						
75°	45				8	52	44	39	51	44	38	50	43	38						
85°	12				9	48	40	35	48	40	35	46	40	35						
90°	0				10	45	37	32	44	37	32	43	37	32						

Beam Angle: 83.2°
Field Angle: 147.3°

WF6 SWW5 90CRI _ 5000K Input Watts: 13.1, Delivered Lumens: 989, LPW: 75.5, S/MH: 1.09, Test No: ISF 202630P10



CP Summary		Zonal Lumen Summary				Coefficients of Utilization										Cone of Light			Luminance (cd/sq.m)	
0°	Zone	Lumens	% Fixture	pf	80%		20%		70%		50%		Mounting Height	Initial FC Center Beam	Beam Diameter	0°	Average Luminance			
				pc	50%	30%	10%	50%	30%	10%	50%	30%						10%		
0°	504	0° - 30°	359	36%	0	119	119	119	116	116	116	111	111	111	6.0	14.0	10.7	0°	63,430	
5°	501	0° - 40°	545	55%	1	106	102	98	104	100	97	99	96	94	8.0	7.9	14.2	45°	39,802	
15°	471	0° - 60°	838	85%	2	94	88	82	92	86	81	88	84	80	10.0	5.0	17.8	55°	32,224	
25°	406	0° - 90°	989	100%	3	84	76	70	82	75	70	79	73	68	12.0	3.5	21.3	65°	26,837	
35°	315	90° - 180°	0	0%	4	75	67	61	74	66	60	71	65	60	14.0	2.6	24.9	75°	21,911	
45°	224	0° - 180°	989	100%	5	68	60	53	67	59	53	65	58	53				85°	16,869	
55°	147				6	62	53	47	61	53	47	59	52	47						
65°	90				7	57	48	43	56	48	42	54	47	42						
75°	45				8	52	44	39	51	44	38	50	43	38						
85°	12				9	48	40	35	48	40	35	46	40	35						
90°	0				10	45	37	32	44	37	32	43	37	32						

Beam Angle: 83.2°
Field Angle: 147.3°