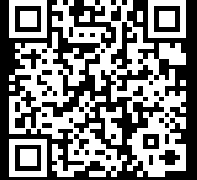


# Rittal – The System.

Faster – better – everywhere.



## SK 3238.300 Blue e+ outlet filter

State: 9/22/2025 (Source: [rittal.com/us-en](http://rittal.com/us-en))

ENCLOSURES

POWER DISTRIBUTION

CLIMATE CONTROL

IT INFRASTRUCTURE

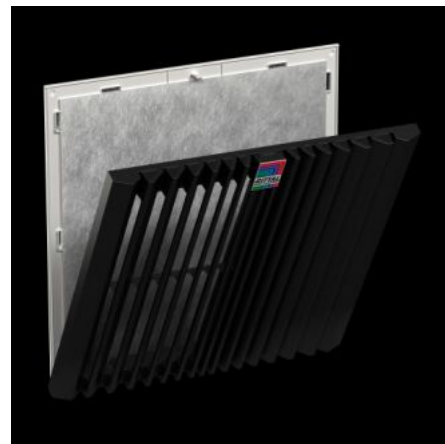
SOFTWARE & SERVICES

FRIEDHELM LOH GROUP



# SK 3238.300 - Blue e+ outlet filter

The outlet filter is used in conjunction with the associated filter fan to dissipate lost heat out of the enclosures, to ventilate the enclosure and to protect temperature-sensitive components. This is done via the direct supply of ambient air that must be below the permissible temperature inside the enclosure.



## Features

Model No.	SK 3238.300
Version	wall-mounted
Benefits	Easy filter change thanks to a new opening mechanism on the louvre grille Faster assembly on the enclosure due to optimized snap hooks Tool-free mounting
Material	Plastic
Color	RAL 7035
Supply includes	Outlet Filters Pleated filter
Mounting cut-out	Width of opening: 124 mm Cut-out height: 124 mm Width of opening: 4.88 " Cut-out height: 4.88 "
Suitable for Model No.	SK 3238.7xx

# Features

---

Dimensions	Width: 148.5 mm Height: 148.5 mm Depth: 34.2 mm Width: 5.85 " Height: 5.85 " Depth: 1.35 "
Protection category NEMA	Type 12 with chopped fiber filter/pleated filter Type 3, 3R, 4, 4X with chopped fiber filter/pleated filter and hose-proof hood
Protection category IP to IEC 60529	IP 54 with chopped fiber filter/pleated filter IP 55 with pleated filter and absorber mat IP 56 with chopped fiber filter/pleated filter and hose-proof hood
Packaging unit	1 pc(s).
Net weight	0.161
Gross weight	0.206
Customs tariff number	39269097
EAN	4028177997653
ETIM 9	EC002513
ETIM 8	EC002513
ECLASS 8.0	27180706

---

# Approvals

---

Approvals	UL + C-UL - FTTA UR + C-UR (recognized)
-----------	--------------------------------------------