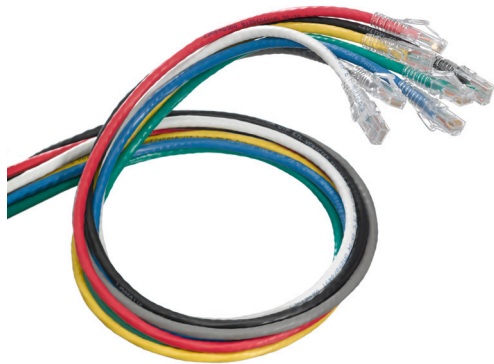


eXtreme® Cat 6 UTP SlimLine Boot Patch Cords

APPLICATION

eXtreme Cat 6 UTP SlimLine Boot Patch Cords feature a narrow profile to support traditional and high-density panels and switches. The snagless plug design makes the patch cords an excellent choice in environments where moves, adds, and changes are frequent.



SPECIFICATION

Patch cords shall meet or exceed electrical transmission performance requirements of links and channels as described in ANSI/TIA-568.2-D (Cat 6) and ISO/IEC 11801-1 (Class E) and EN 50173-1 (Class E). Patch cords shall be 24 AWG stranded conductor with an 8-position modular plug on each end. The cords shall include a narrow-profile boot that allows for easy cord removal without snagging. The cords shall be available in standard lengths of 1, 3, 5, 7, 10, 15, and 20 feet. Patch cord plug shall be clear and contacts shall have industry-standard, ANSI/TIA-1096-A compliant 50 micro inches of gold plating.

COUNTRY OF ORIGIN

China

WARRANTY INFORMATION

Limited Product and Limited Extended Warranties are rendered VOID if the installed structured cabling system is used for PoE applications that exceed the product's specified power rating. For a copy of Leviton product warranties, visit www.leviton.com/warranty.

FEATURES

- Tested and verified to meet Cat 6 component requirements for TIA, ISO/IEC, and EN standards
- Improved plug access in tight spaces
- Snagless plug design with integrated strain-relief boot
- Stranded conductor for longer flex-life
- T568B wiring to function in either T568A or T568B applications
- All patch cords are backwards compatible with earlier ANSI/TIA category ratings
- Channel performance verified by third-party testing in 4-connector, 100-meter channel

DESIGN CONSIDERATIONS

- ANSI/TIA channel performance limits total length of patching and equipment cords to 32 feet (10 meters) per ANSI/TIA-568.2-D or 88.6 feet (27 meters) in a MUTOA application
- A variety of colors for color coding or organization
- Available in six standard lengths (custom lengths available)

STANDARDS COMPLIANCE

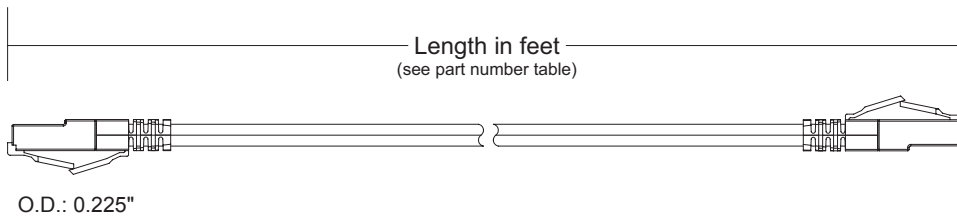
- ANSI/TIA-568.2-D (Cat 6)
- ISO/IEC 11801-1 (Cat 6)
- EN 50173-1 (Cat 6)
- ANSI/TIA-1096-A (formerly FCC Part 68)
- UL 444 CM Rated
- IEEE 802.3bt PoE Type 1 (15.4 Watts) formerly 802.3af, Type 2 (30 Watts) formerly 802.3at, Type 3 (60 Watts), Type 4 (90 Watts)
- Cisco UPoE (60 Watts), UPoE+ (90 Watts)
- Power over HDBaseT™ PoH (95 Watts)
- For 100 watt applications - Up to 100 cables in a bundle
- cULus Listed (UL 1863)
- RoHS 3

PHYSICAL SPECIFICATIONS

Dimensions: See page two
Outer Diameter: 0.225"
Materials: 24 AWG UTP stranded conductor, modular non-keyed, 8-position, 8-conductor plug, 94V-0 rated
Colors: White, yellow, red, blue, green, gray, black
Environmental Conditions: Operating Temperature: -20 °C to +60 °C
Installation Temperature: 0 °C to +50 °C

ELECTRONIC FILES

For CAD files, typical specs, or technical drawings (.DXF, .DWG), visit www.leviton.com.



6D460-xxx

EXTREME® CAT 6 UTP SLIMLINE BOOT PATCH CORDS – STOCKED ITEMS

Description	White	Yellow	Red	Blue	Green	Gray	Black
Cat 6 UTP SlimLine Boot Patch Cord, 1 feet (0.3 m)	6D460-01W	6D460-01Y	6D460-01R	6D460-01L	6D460-01G	6D460-01S	6D460-01E
Cat 6 UTP SlimLine Boot Patch Cord, 3 feet (0.9 m)	6D460-03W	6D460-03Y	6D460-03R	6D460-03L	6D460-03G	6D460-03S	6D460-03E
Cat 6 UTP SlimLine Boot Patch Cord, 5 feet (1.5 m)	6D460-05W	6D460-05Y	6D460-05R	6D460-05L	6D460-05G	6D460-05S	6D460-05E
Cat 6 UTP SlimLine Boot Patch Cord, 7 feet (2.1 m)	6D460-07W	6D460-07Y	6D460-07R	6D460-07L	6D460-07G	6D460-07S	6D460-07E
Cat 6 UTP SlimLine Boot Patch Cord, 10 feet (3.0 m)	6D460-10W	6D460-10Y	6D460-10R	6D460-10L	6D460-10G	6D460-10S	6D460-10E
Cat 6 UTP SlimLine Boot Patch Cord, 15 feet (4.6 m)	6D460-15W	6D460-15Y	6D460-15R	6D460-15L	6D460-15G	6D460-15S	6D460-15E
Cat 6 UTP SlimLine Boot Patch Cord, 20 feet (6.1 m)	6D460-20W	6D460-20Y	6D460-20R	6D460-20L	6D460-20G	6D460-20S	6D460-20E

NOTE: Other lengths are available by special order. Please contact customer service for more information.



For assistance customizing your patch cords, please visit www.leviton.com/configurator or call Tech Support at 800.824.3005.

Leviton Network Solutions 2222 - 222nd St. SE Bothell, WA 98021-4416	Asia / Pacific T +1.631.812.6228 E infoasean@leviton.com	Canada T +1.514.954.1840 E pcservice@leviton.com	Caribbean T +1.954.593.1896 E infocaribbean@leviton.com	China T +852.2774.9876 E infochina@leviton.com	Colombia T +57.1.743.6045 E infocolombia@leviton.com
tel 1-800-824-3005 tel +1-425-486-2222 appeng@leviton.com www.leviton.com	Europe T +44.0.1592.772124 E customerserviceeu@leviton.com	Mexico T +52.55.5082.1040 E lsamarketing@leviton.com	Middle East & Africa T +971.4.247.9800 E lmeinfo@leviton.com	South Korea T +82.2.3273.9963 E infokorea@leviton.com	