



T5

25T5HO/COR/46-840/MF35/G 25/1

Philips T5 LED tubes offer an affordable, energy saving retrofit solution. The T5 lamps have been engineered to withstand the test of time with a 50,000-hour lifetime and a limited 5-year warranty to back it up. The lighting performance effectively replaces conventional fluorescent T5 HO or T5 HE lamps. Available in either InstantFit (Type A or Type C) or MainsFit (Type B / Ballast bypass), Philips T5 TLEDs provide a variety of options for any application.

Product data

General information	
Cap-Base	G5 [G5]
EU RoHS compliant	Yes
Nominal Lifetime (Nom)	50000 h
Switching Cycle	50000X
Light technical	
Color Code	840 [CCT of 4000K]
Beam Angle (Nom)	200 °
Luminous Flux (Nom)	3500 lm
Color Designation	Cool White (CW)
Correlated Color Temperature (Nom)	4000 K
Luminous Efficacy (rated) (Nom)	140.00 lm/W
Color Consistency	<6
Color Rendering Index (Nom)	80
LLMF At End Of Nominal Lifetime (Nom)	70 %
Operating and electrical	
Input Frequency	50 to 60 Hz
Power (Nom)	25 W
Lamp Current (Max)	250 mA

Lamp Current (Min)	95 mA
Starting Time (Nom)	0.5 s
Warm Up Time to 60% Light (Nom)	0.5 s
UL Type	TLED_Type B; UL classified double end
Power Factor (Nom)	0.9
Voltage (Nom)	120-277 V
Temperature	
T-Ambient (Max)	45 °C
T-Ambient (Min)	-20 °C
T-Storage (Max)	65 °C
T-Storage (Min)	-40 °C
T-Case Maximum (Nom)	75 °C
Controls and dimming	
Dimmable	Limited
Mechanical and housing	
Bulb Finish	Frosted
Bulb Material	Glass
Product Length	1200 mm

T5

Bulb Shape	Tube, double-ended
------------	--------------------

Approval and application

Energy Saving Product	Yes
Approval Marks	RoHS compliance UL certificate DLC compliance

Product data

Order product name	25T5HO/COR/46-840/MF35/G 25/1
--------------------	-------------------------------

EAN/UPC - Product	046677576240
-------------------	--------------

Order code	929003122504
------------	--------------

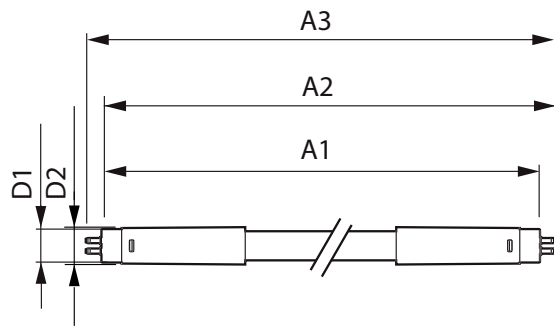
Numerator - Quantity Per Pack	1
-------------------------------	---

Numerator - Packs per outer box	25
---------------------------------	----

Material Nr. (12NC)	929003122504
---------------------	--------------

Net Weight (Piece)	0.151 kg
--------------------	----------

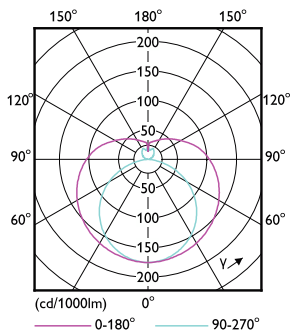
Dimensional drawing



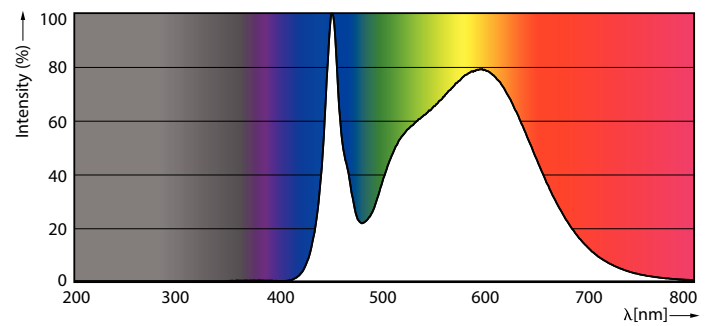
25T5HO/COR/46-840/MF35/G 25/1

Product	D1	D2	A1	A2	A3
25T5HO/COR/46-840/MF35/G 25/1	15.3 mm	18.2 mm	1149 mm	1154.9 mm	1163.2 mm

Photometric data

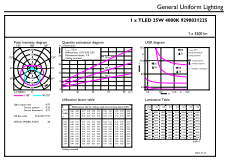


LEDtube COR NAM4 25W G5 3300lm-LDD



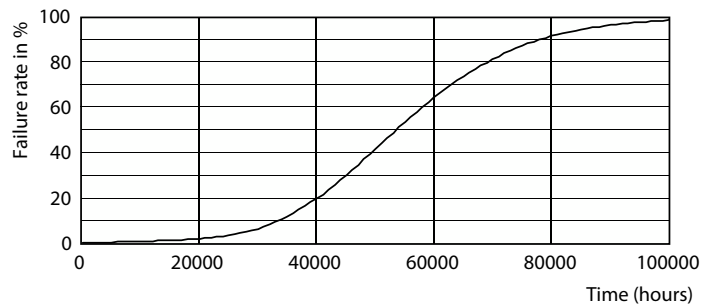
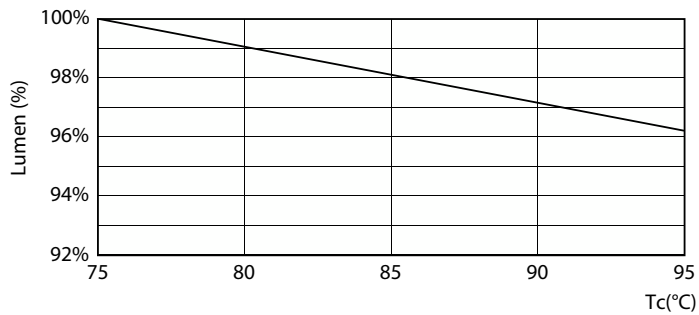
LEDtube COR NAM1 8W G5 1050lm 840-POC

Photometric data

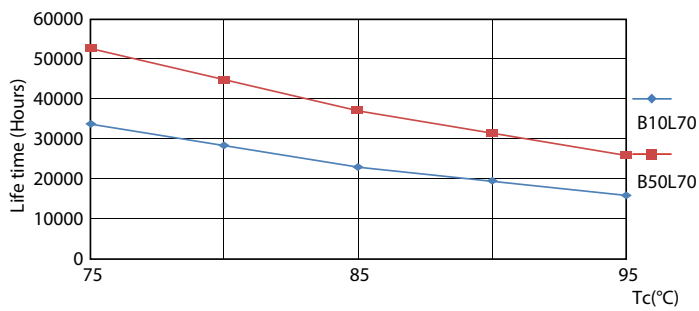


LEDtube COR NAM4 25W G5 3500lm 840-GUL

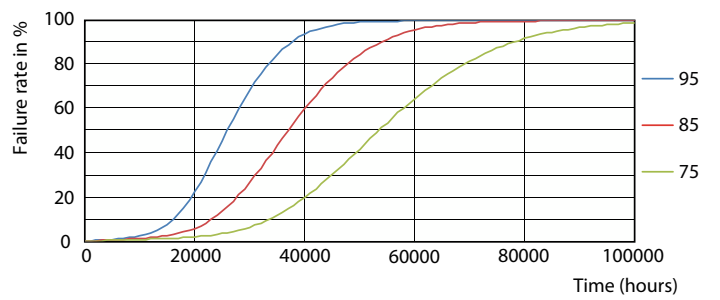
Lifetime



LEDtube COR NAM4 25W 50K LumenVsTc-LMP



Life Expectancy Diagram



LEDtube 50K 7595 LifetimeVsTc-LED

LEDtube 50K 7595 FailureRate-LED

