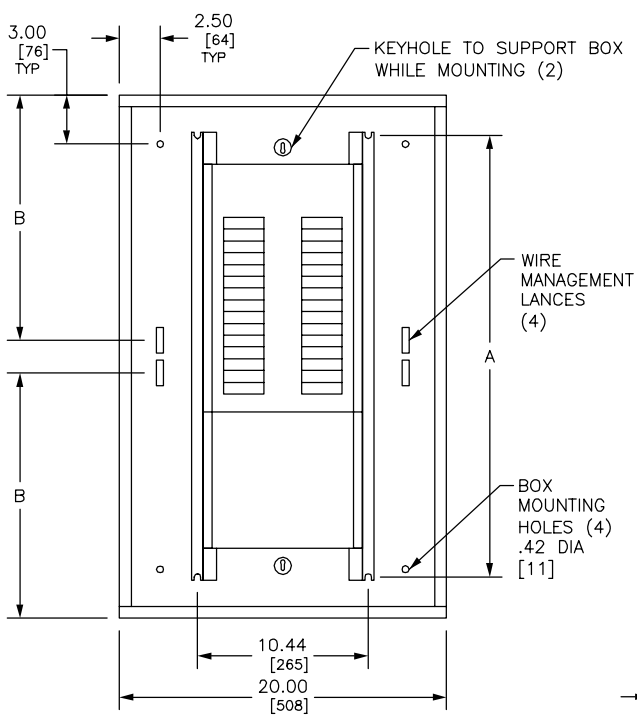
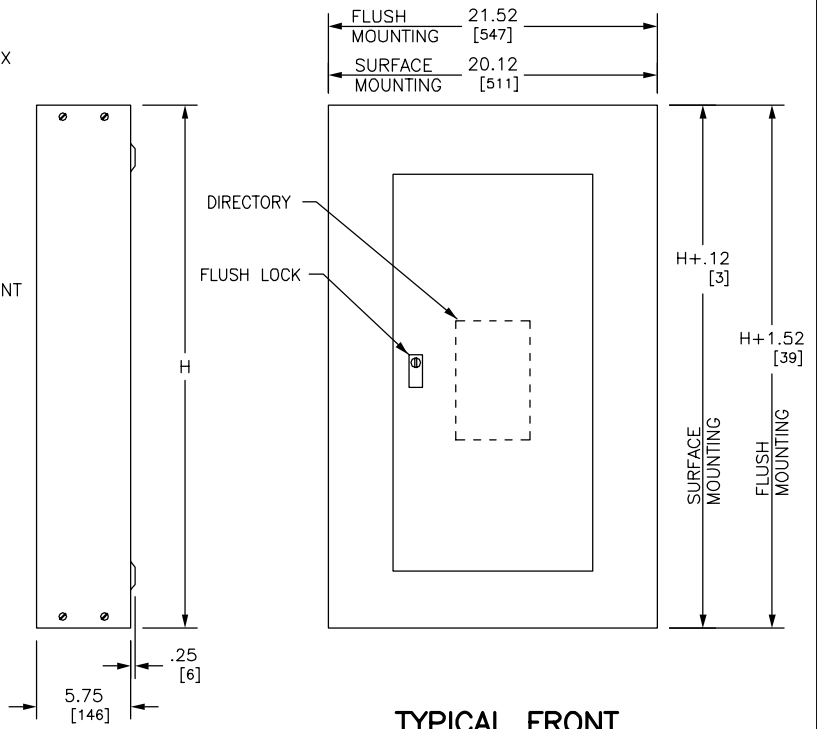


REV	DESCRIPTION	BY	DATE				
---	---	---	---	---	---	---	---

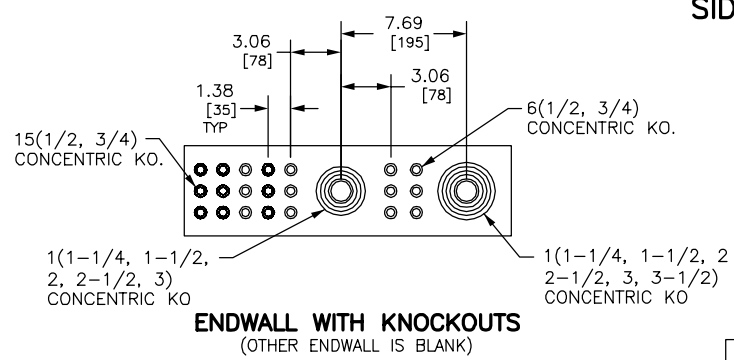


TYPICAL BOX WITH INTERIOR

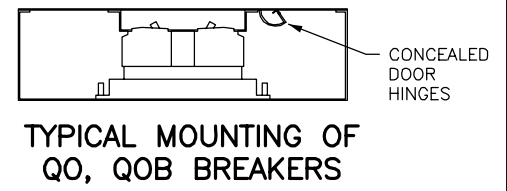


TYPICAL BOX SIDE VIEW

TYPICAL FRONT



ENDWALL WITH KNOCKOUTS
(OTHER ENDWALL IS BLANK)



TYPICAL MOUNTING OF QO, QOB BREAKERS

DUAL DIMENSIONS: INCHES
MILLIMETERS

MAXIMUM MAIN LUGS AMPERE RATING	MAXIMUM NUMBER OF CIRCUITS	H		A		B	
		IN	MM	IN	MM	IN	MM
100A	18	26.00	660	21.00	533	11.00	279
	30	32.00	813	27.00	686	15.00	381
225A	30	32.00	813	27.00	686	15.00	381
	42 & 54	38.00	965	33.00	838	15.00	381
	72	44.00	1118	39.00	991	15.00	381
	84	50.00	1270	45.00	1143	15.00	381
100A WITH SUB FEED LUGS OR FEED THRU LUGS	18	26.00	660	21.00	533	15.00	381
	30	32.00	813	27.00	686	15.00	381
225A WITH SUB FEED LUGS	30	38.00	965	33.00	838	15.00	381
	42 & 54	44.00	1118	39.00	991	15.00	381
	72	50.00	1270	45.00	1143	15.00	381
	84	56.00	1422	51.00	1295	15.00	381
225A WITH FEED THRU LUGS	30 & 42	38.00	965	33.00	838	15.00	381
	54	44.00	1118	39.00	991	15.00	381
	72	50.00	1270	45.00	1143	15.00	381
	84	56.00	1422	51.00	1295	15.00	381
225A WITH SUB FEED BREAKER	30	50.00	1270	45.00	1143	15.00	381
	42 & 54	56.00	1422	51.00	1295	15.00	381
	72	62.00	1575	57.00	1448	15.00	381
84	68.00	1727	63.00	1600	15.00	381	

REFER TO DP CATALOG CLASS 1640 FOR ADDITIONAL INFORMATION

FOR TYPE 3R APPLICATIONS USE IN CONJUNCTION WITH PBA711

NQ PANELBOARDS MEET THE APPLICABLE REQUIREMENTS OF UL AND CSA.

BOX: CODE GAUGE GALVANIZED STEEL. ONE ENDWALL IS BLANK, THE OTHER HAS KNOCKOUTS.

FRONT: MONO-FLAT CONSTRUCTION WITH CONCEALED TRIM SCREWS AND DOOR HINGES. ANSI 49 GRAY BAKED ENAMEL FINISH ELECTRODEPOSITED OVER CLEANED PHOSPHATIZED STEEL.

LOCK: FLUSH LOCK WITH BRUSHED STAINLESS STEEL ESCUTCHEON. NSR-251 KEY.

JOB NAME: ---	EQUIPMENT DESIGNATION: ---
JOB LOCATION: ---	EQUIPMENT TYPE: NQ MLO 100A/225A TYPE 1
DRAWN BY: ---	DRAWING TYPE: ---
ENGR: ---	
DATE: AUGUST 2007	
DRAWING STATUS: ---	DWG# PBA701A PG 01 OF 01 REV ---