



## NVENT CADDY ALL-IN-ONE FLOOR-MOUNTED BRACKET

### CATALOG NUMBER

**A1F1218**



### CERTIFICATIONS



### FEATURES

Versatile bracket for mounting nVent CADDY All-in-One box assemblies

Positions box a fixed distance from the floor eliminating the need to measure and promoting consistent placement

Provides excellent rigidity and reduces issues at trim out

Dual mounting tabs allow bracket to be installed on either side of the stud

Integrated first means of support accepts conduit or MC/AC cable

Accommodates additional nVent CADDY All-in-One box assemblies, support brackets and low-voltage mounting plates

### PRODUCT ATTRIBUTES

Material: Steel

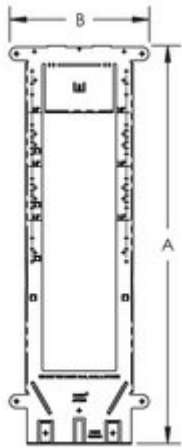
Finish: Pregalvanized

EMT Conduit Size: 1/2";3/4"

MC/AC Cable Size: 14-2 to 12-3

A: 22 3/16"

## DIAGRAMS



## WARNING

nVent products shall be installed and used only as indicated in nVent's product instruction sheets and training materials. Instruction sheets are available at [www.nvent.com](http://www.nvent.com) and from your nVent customer service representative. Improper installation, misuse, misapplication or other failure to completely follow nVent's instructions and warnings may cause product malfunction, property damage, serious bodily injury and death and/or void your warranty.

### North America

+1.800.753.9221

Option 1 – Customer Care

Option 2 – Technical Support

### Europe

Netherlands:

+31 800-0200135

France:

+33 800 901 793

### Europe

Germany:

800 1890272

Other Countries:

+31 13 5835404

### APAC

Shanghai:

+ 86 21 2412 1618/19

Sydney:

+61 2 9751 8500



Our powerful portfolio of brands:

**nVent.com** CADDY ERICO HOFFMAN RAYCHEM SCHROFF TRACER