

Product data sheet

Specifications

SQUARE D



Load center, QO, 1 phase, 24 spaces, 36 circuits, 200A convertible main breaker, PoN, NEMA1

QO124M200P

Product availability: Stock - Normally stocked in distribution facility

Main

Marketing Trade Name	QO
Product Type	Load Center

Complementary

Tightening Torque	Cover 20 lb.in
PoN Convertible Mains (lugs)	PoN Convertible Mains (breaker)
Rated Current	200 A
Number of Spaces	24
Max Short Circuit Current Rating	22 kA
Maximum Number of Single Pole Circuits	36
Maximum Number of Tandem Breakers	12
Number of Phases	1 phase
Ground Bar	Grounding bar (ordered separately)
Box Number	9
Height	29.8 in (758 mm)
Width	14.3 in (362 mm)
Depth	3.7 in (95 mm)
Product Weight	25.993 lb(US) (11.790 kg)

Environment

Enclosure Rating	NEMA 1 indoor enclosure
Ambient Air Temperature for Operation	23 °F (-5 °C) 104 °F (40 °C)
Product Certifications	UL Listed

Ordering and shipping details

Category	US1DE3A10001
Discount Schedule	DE3A
GTIN	785901611189
Returnability	Yes
Country of origin	US

Price is "List Price" and may be subject to a trade discount – check with your local distributor or retailer for actual price.

Packing Units

Unit Type of Package 1	PCE
Number of Units in Package 1	1
Package 1 Height	3.74 in (9.5 cm)
Package 1 Width	14.25 in (36.2 cm)
Package 1 Length	29.84 in (75.8 cm)
Package 1 Weight	15.0003 lb(US) (6.804 kg)



Environmental Data

Schneider Electric aims to achieve Net Zero status by 2050 through supply chain partnerships, lower impact materials, and circularity via our ongoing “Use Better, Use Longer, Use Again” campaign to extend product lifetimes and recyclability.

[Environmental Data explained >](#)

[How we assess product sustainability >](#)

Environmental footprint

[Environmental Disclosure](#)

[Product Environmental Profile](#)

Use Better

Materials and Substances

Packaging made with recycled cardboard

No

Packaging without single use plastic

No

[EU RoHS Directive](#)

Compliant with Exemptions

REACH Regulation

[REACH Declaration](#)

California proposition 65

WARNING: This product can expose you to chemicals including: Lead and lead compounds, which is known to the State of California to cause cancer and birth defects or other reproductive harm. For more information go to www.P65Warnings.ca.gov

Use Again

Repack and remanufacture

Circularity Profile

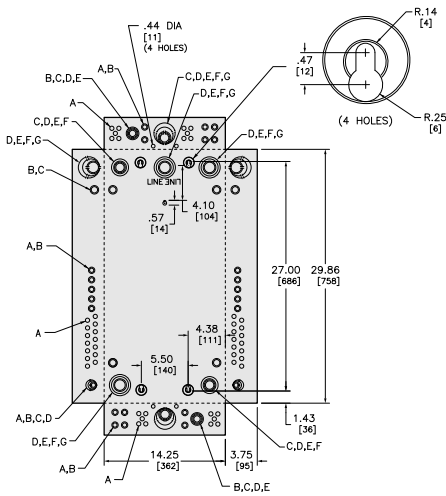
No need of specific recycling operations

Take-back

No

Technical Illustration

Dimensions



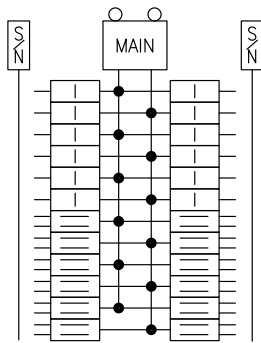
KNOCKOUTS							
SYMBOL	A	B	C	D	E	F	G
IN	.50	.75	1.00	1.25	1.50	2.00	2.50
MM	13	19	25	32	38	51	64

in.
(mm)

ALL DIMENSIONS ARE APPROXIMATE.
ALSO REFER TO TECHNICAL DRAWINGS AND DOCUMENTATION.

Technical Illustration

Wiring diagram



QO124M150P
QO124M200P