

T8

15.5T8/MAS/48-835/IF24/P/DIM 25/1

Our TLEDs are available in InstantFit (Type A / Type C) or MainsFit (Ballast bypass / Type B) versions. The InstantFit lamps work on a broad variety of ballasts and LED drivers. Only InstantFit has over 15,000 lamp & ballast combinations delivering even light output, energy savings and a long lifetime. Our MainsFit products feature a double-ended design, simplifying installation while a proprietary safety circuit minimizes a shock risk. Lamp sizes range from 2-foot to 8-foot and U-bend with a variety of lumen outputs.

Product data

General information	
Base	G13 [Medium Bi-Pin Fluorescent]
EU RoHS compliant	Yes
Nominal Lifetime (Nom)	70000 h
Switching Cycle	50000X

Light technical	
Color Code	835 [CCT of 3500K]
Beam Angle (Nom)	180 °
Initial lumen (Nom)	2400 lm
Color Designation	White (WH)
Correlated Color Temperature (Nom)	3500 K
Luminous Efficacy (rated) (Nom)	154.00 lm/W
Color Consistency	<6
Color Rendering Index (Nom)	80
LLMF At End Of Nominal Lifetime (Nom)	70 %

Operating and electrical	
Input Frequency	50 to 60 Hz
Power (Rated) (Nom)	15.5 W

Starting Time (Nom)	0.5 s
Warm Up Time to 60% Light (Nom)	0.5 s
UL Type	Type A - works on ballast
Power Factor (Nom)	0.9
Voltage (Nom)	120-277, 347 V

Temperature	
T-Ambient (Max)	55 °C
T-Ambient (Min)	-20 °C
T-Storage (Max)	65 °C
T-Storage (Min)	-40 °C
T-Case Maximum (Nom)	50 °C

Controls and dimming	
Dimmable	Yes

Mechanical and housing	
Bulb Material	Plastic
Product Length	48 in

T8

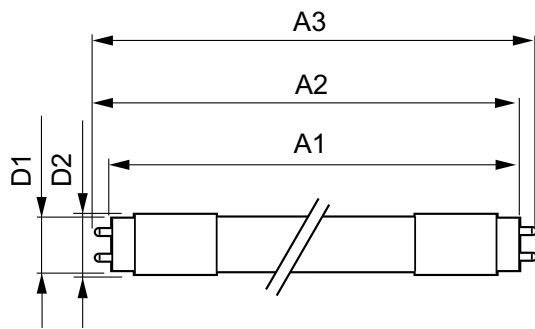
Bulb Shape	Tube, double-ended
Approval and application	
Energy Saving Product	Yes
Approbation Marks	RoHS compliance UL certificate DLC compliance
Energy Consumption kWh/1000 h	- kWh

Product data

Order product name	15.5T8/MAS/48-835/IF24/P/DIM 25/1
--------------------	-----------------------------------

EAN/UPC - Product	046677545185
Order code	533372
Numerator - Quantity Per Pack	1
Numerator - Packs per outer box	25
Material Nr. (12NC)	929002016304
Net Weight (Piece)	0.230 kg
Model Number	9290020163

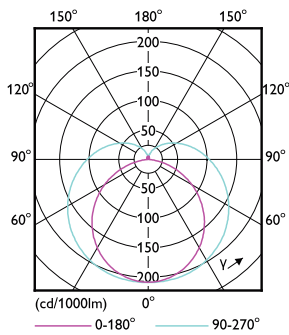
Dimensional drawing



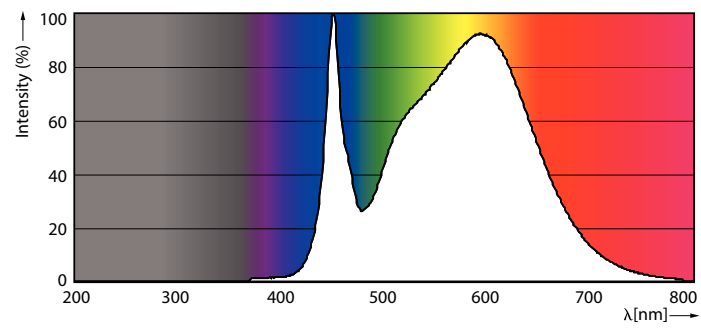
15.5T8/MAS/48-835/IF24/P/DIM 25/1

Product	D1	D2	A1	A2	A3
15.5T8/MAS/48-835/IF24/P/DIM 25/1	25.7 mm	28 mm	1198.1 mm	1205.2 mm	1212.3 mm

Photometric data

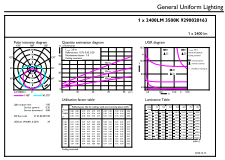


LEDtube 15,5W G13 T8



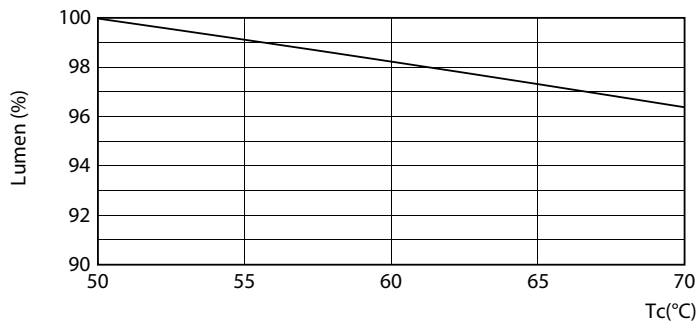
LEDtube 15,5W G13 T8 835

Photometric data

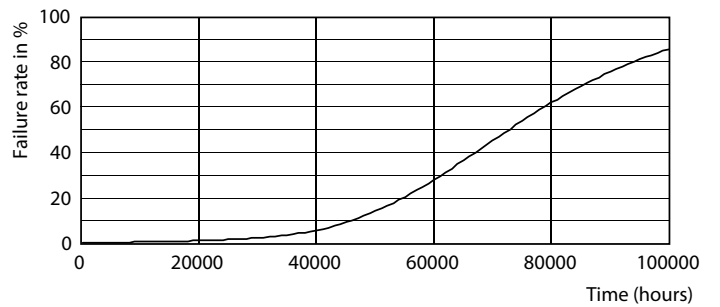


LEDtube 15,5W G13 T8 835

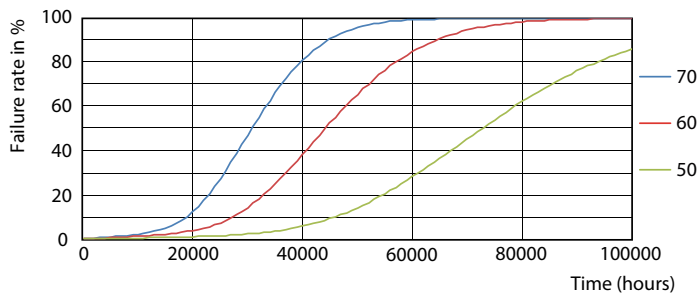
Lifetime



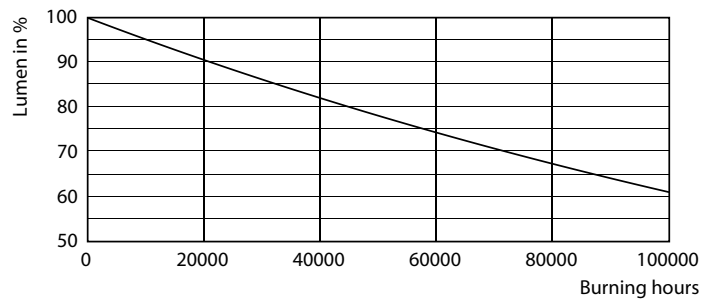
LEDtube 15,5W G13 T8 LumenVsTc



LEDtube 15,5W G13 T8



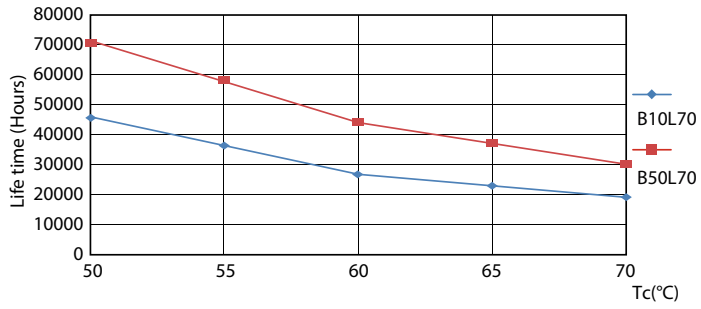
LEDtube 15,5W G13 T8 FailureRate



LEDtube 15,5W G13 T8

T8

Lifetime



LEDtube 15,5W G13 T8 LifetimeVsTc

