

T8

7T8/MAS/24-840/IF11/P/DIM 10/1

Our TLEDs are available in InstantFit (Type A / Type C) or MainsFit (Ballast bypass / Type B) versions. The InstantFit lamps work on a broad variety of ballasts and LED drivers. Only InstantFit has over 15,000 lamp & ballast combinations delivering even light output, energy savings and a long lifetime. Our MainsFit products feature a double-ended design, simplifying installation while a proprietary safety circuit minimizes a shock risk. Lamp sizes range from 2-foot to 8-foot and U-bend with a variety of lumen outputs.

Product data

General information	
Base	G13 [Medium Bi-Pin Fluorescent]
EU RoHS compliant	Yes
Nominal Lifetime (Nom)	70000 h
Switching Cycle	50000X
Light technical	
Color Code	841 [CCT of 4100K (841)]
Beam Angle (Nom)	180 °
Initial lumen (Nom)	1200 lm
Color Designation	Cool White (CW)
Correlated Color Temperature (Nom)	4000 K
Luminous Efficacy (rated) (Nom)	164.00 lm/W
Color Consistency	<6
Color Rendering Index (Nom)	80
LLMF At End Of Nominal Lifetime (Nom)	70 %
Operating and electrical	
Input Frequency	20K to 120K Hz
Power (Rated) (Nom)	7 W

Lamp Current (Max)	240 mA
Lamp Current (Min)	80 mA
Starting Time (Nom)	0.5 s
Warm Up Time to 60% Light (Nom)	0.5 s
UL Type	Type A - works on ballast
Power Factor (Nom)	0.9
Voltage (Nom)	120-277, 347 V
Temperature	
T-Ambient (Max)	45 °C
T-Ambient (Min)	-20 °C
T-Storage (Max)	65 °C
T-Storage (Min)	-40 °C
T-Case Maximum (Nom)	50 °C
Controls and dimming	
Dimmable	Yes
Mechanical and housing	
Bulb Material	Plastic

T8

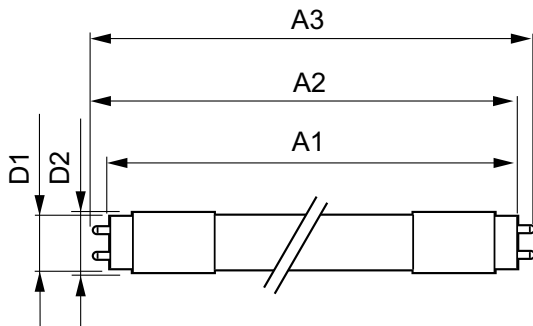
Product Length	24 in
Bulb Shape	Tube, double-ended
Approval and application	
Energy Saving Product	Yes
Approbation Marks	RoHS compliance UL certificate DLC compliance
Energy Consumption kWh/1000 h	- kWh
Energy Certifications	DLC Standard

EAN/UPC - Product	046677541835
Order code	541839
Numerator - Quantity Per Pack	1
Numerator - Packs per outer box	10
Material Nr. (12NC)	929001987104
Net Weight (Piece)	0.080 kg
Model Number	9290019871

Product data

Order product name	7T8/MAS/24-840/IF11/P/DIM 10/1
--------------------	--------------------------------

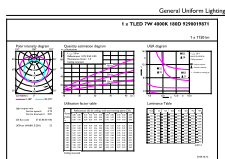
Dimensional drawing



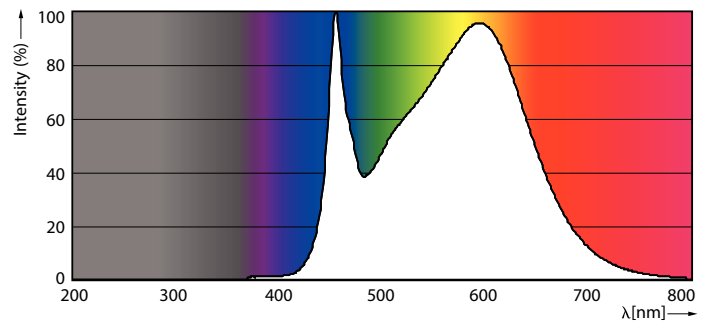
7T8/MAS/24-840/IF11/P/DIM 10/1

Product	D1	D2	A1	A2	A3
7T8/MAS/24-840/IF11/P/DIM 10/1	25.7 mm	26.3 mm	588.6 mm	595.7 mm	602.8 mm

Photometric data

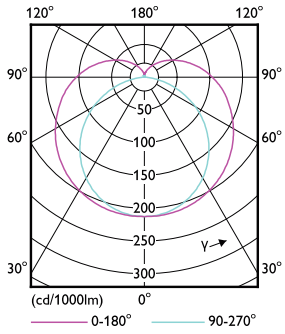


G13 4000K 1150lm



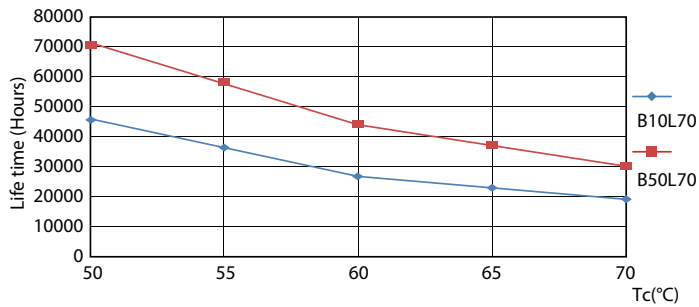
G13 4000K 1150lm

Photometric data

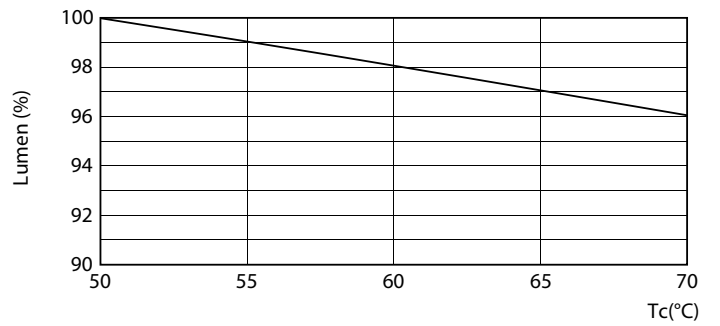


G13 4000K

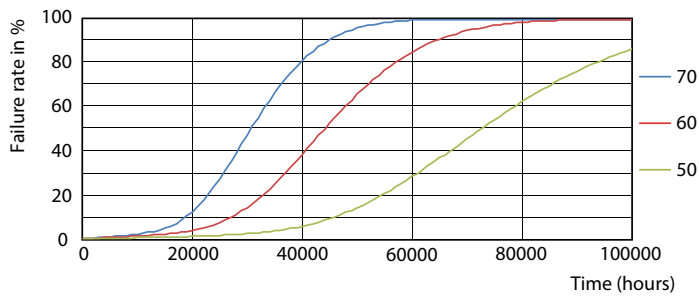
Lifetime



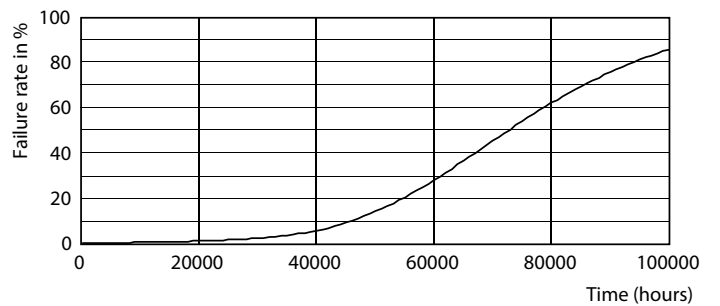
G13 4000K



G13 4000K



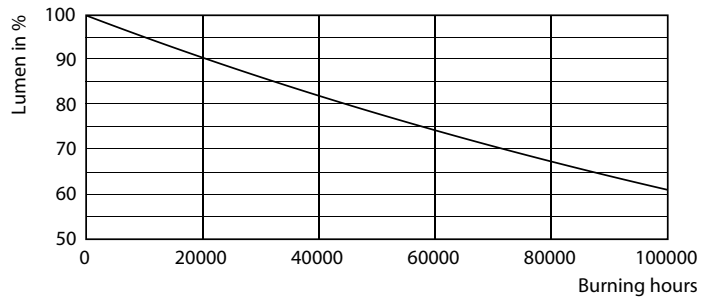
G13 4000K



G13 4000K

T8

Lifetime



G13 4000K

