



# T8

## 7T8/MAS/24-835/IF10/P/DIM 10/1

Our TLEDs are available in InstantFit (Type A / Type C) or MainsFit (Ballast bypass / Type B) versions. The InstantFit lamps work on a broad variety of ballasts and LED drivers. Only InstantFit has over 15,000 lamp & ballast combinations delivering even light output, energy savings and a long lifetime. Our MainsFit products feature a double-ended design, simplifying installation while a proprietary safety circuit minimizes a shock risk. Lamp sizes range from 2-foot to 8-foot and U-bend with a variety of lumen outputs.

### Product data

General information		Lamp Current (Max)	
Base	G13 [ Medium Bi-Pin Fluorescent]		240 mA
EU RoHS compliant	Yes	Lamp Current (Min)	80 mA
Nominal Lifetime (Nom)	70000 h	Starting Time (Nom)	0.5 s
Switching Cycle	50000X	Warm Up Time to 60% Light (Nom)	0.5 s
Light technical		UL Type	Type A - works on ballast
Color Code	835 [ CCT of 3500K]	Power Factor (Nom)	0.9
Beam Angle (Nom)	180 °	Voltage (Nom)	120-277, 347 V
Initial lumen (Nom)	1200 lm	Temperature	
Color Designation	White (WH)	T-Ambient (Max)	45 °C
Correlated Color Temperature (Nom)	3500 K	T-Ambient (Min)	-20 °C
Luminous Efficacy (rated) (Nom)	157.00 lm/W	T-Storage (Max)	65 °C
Color Consistency	<6	T-Storage (Min)	-40 °C
Color Rendering Index (Nom)	80	T-Case Maximum (Nom)	50 °C
LLMF At End Of Nominal Lifetime (Nom)	70 %	Controls and dimming	
Operating and electrical		Dimmable	Yes
Input Frequency	20K to 120K Hz	Mechanical and housing	
Power (Rated) (Nom)	7 W	Bulb Material	Plastic

# T8

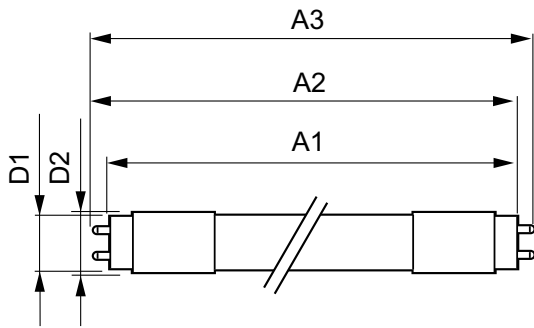
Product Length	24 in
Bulb Shape	Tube, double-ended
<b>Approval and application</b>	
Energy Saving Product	Yes
Approbation Marks	RoHS compliance UL certificate DLC compliance
Energy Consumption kWh/1000 h	- kWh
Energy Certifications	DLC Standard

EAN/UPC - Product	046677541828
Order code	541821
Numerator - Quantity Per Pack	1
Numerator - Packs per outer box	10
Material Nr. (12NC)	929001987004
Net Weight (Piece)	0.080 kg
Model Number	9290019870

## Product data

Order product name	7T8/MAS/24-835/IF10/P/DIM 10/1
--------------------	--------------------------------

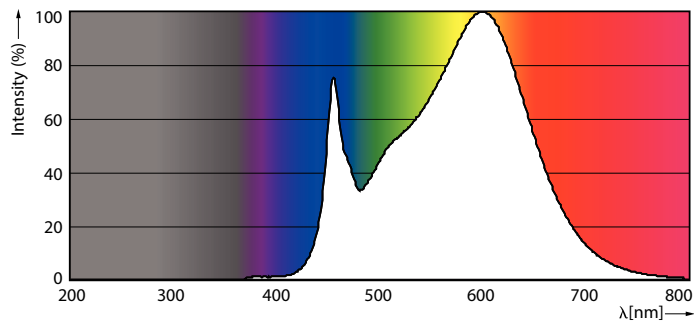
## Dimensional drawing



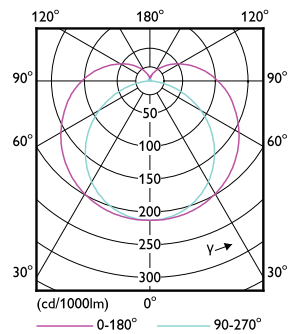
7T8/MAS/24-835/IF10/P/DIM 10/1

Product	D1	D2	A1	A2	A3
7T8/MAS/24-835/ IF10/P/DIM 10/1	25.7 mm	26.3 mm	588.6 mm	595.7 mm	602.8 mm

## Photometric data

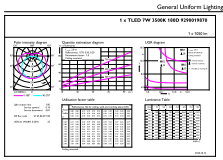


G13 3500K 1100lm



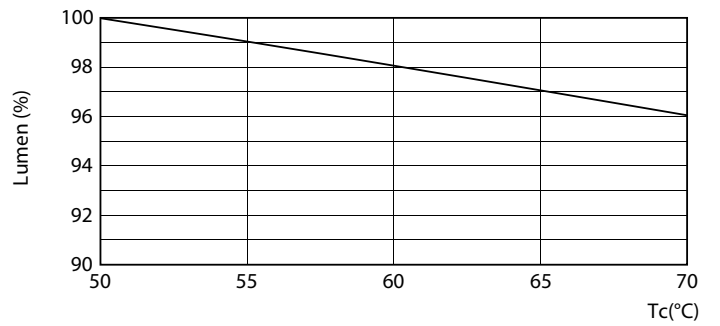
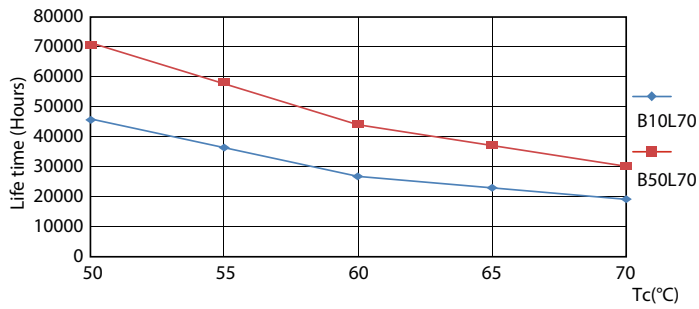
G13 4000K

Photometric data

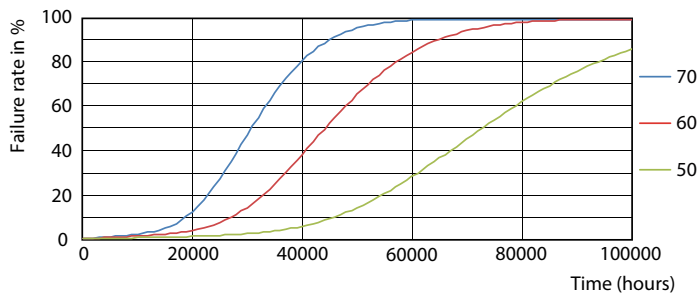


G13 3500K 1100lm

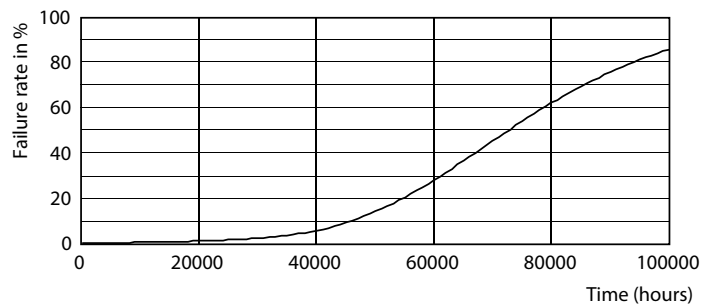
Lifetime



G13 4000K



G13 4000K

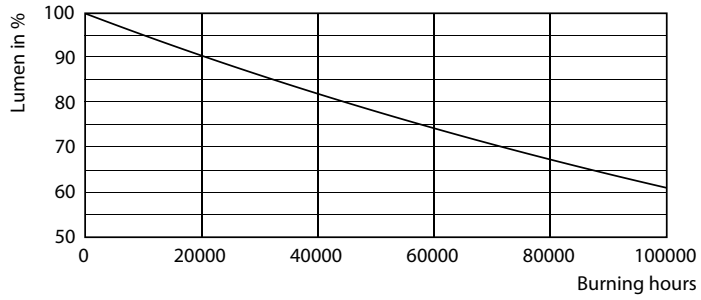


G13 4000K

G13 4000K

# T8

## Lifetime



G13 4000K

