



T8

15.5T8-6U/COR/24-830/MF20/G 10/1

Philips MainsFit (UL Type B) CorePro T8 LED tubes deliver high-quality, flicker free performance at an affordable price. The UL Type B LED tubes are designed with easy installation and long-term maintenance simplicity in mind. Upgrade your lighting to Philips and realize 50,000 hour LED lifetime backed by a 5-year, full replacement limited warranty.

Product data

| General information | | Starting Time (Nom) | |
|---------------------------------------|---------------------|---------------------------------|-----------------------------|
| Base | 2G13 [2G13] | | 0.9 s |
| EU RoHS compliant | Yes | Warm Up Time to 60% Light (Nom) | 0.9 s |
| Nominal Lifetime (Nom) | 50000 h | UL Type | Type B - bypass the ballast |
| Switching Cycle | 50000X | Power Factor (Nom) | 0.9 |
| | | Voltage (Nom) | 120-277 V |
| Light technical | | Temperature | |
| Color Code | 830 [CCT of 3000K] | T-Ambient (Max) | 45 °C |
| Beam Angle (Nom) | 180 ° | T-Ambient (Min) | -20 °C |
| Initial lumen (Nom) | 2000 lm | T-Storage (Max) | 65 °C |
| Color Designation | White (WH) | T-Storage (Min) | -40 °C |
| Correlated Color Temperature (Nom) | 3000 K | T-Case Maximum (Nom) | 51 °C |
| Luminous Efficacy (rated) (Nom) | 129.00 lm/W | | |
| Color Consistency | <6 | Controls and dimming | |
| Color Rendering Index (Nom) | 82 | Dimmable | No |
| LLMF At End Of Nominal Lifetime (Nom) | 70 % | | |
| Operating and electrical | | Mechanical and housing | |
| Input Frequency | 50 to 60 Hz | Bulb Material | Glass |
| Power (Rated) (Nom) | 15.5 W | Product Length | 24 in |
| Lamp Current (Max) | 140 mA | Bulb Shape | Tube, double-ended |
| Lamp Current (Min) | 63 mA | | |

T8

Approval and application

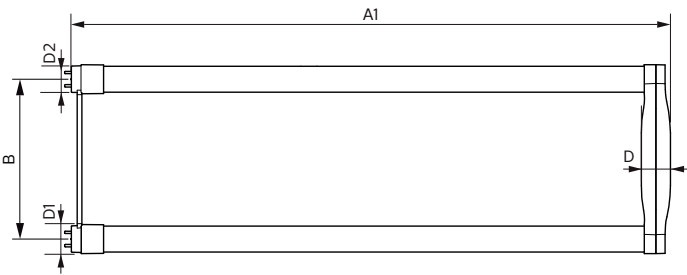
| | |
|-------------------------------|---|
| Energy Saving Product | Yes |
| Approbation Marks | UL certificate RoHS compliance DLC compliance |
| Energy Consumption kWh/1000 h | - kWh |
| Energy Certifications | DLC Standard |

Product data

| | |
|--------------------|----------------------------------|
| Order product name | 15.5T8-6U/COR/24-830/MF20/G 10/1 |
|--------------------|----------------------------------|

| | |
|---------------------------------|--------------|
| EAN/UPC - Product | 046677535537 |
| Order code | 535534 |
| Numerator - Quantity Per Pack | 1 |
| Numerator - Packs per outer box | 10 |
| Material Nr. (12NC) | 929001934604 |
| Net Weight (Piece) | 0.230 kg |
| Model Number | 9290019346 |

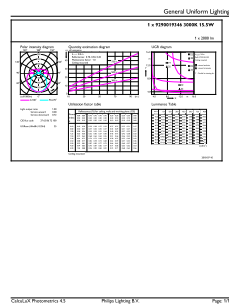
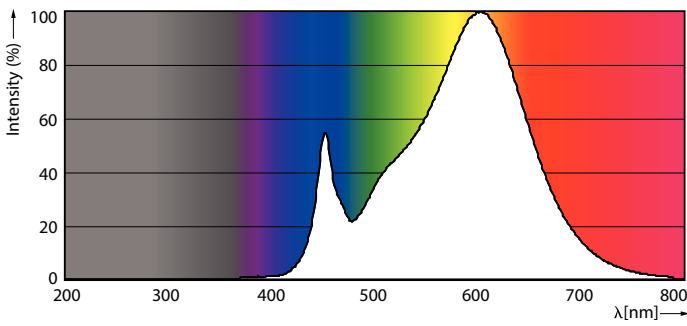
Dimensional drawing



| Product | D1 | D2 | B | A1 | D |
|----------------------------------|---------|---------|--------|--------|---------|
| 15.5T8-6U/COR/24-830/MF20/G 10/1 | 25.7 mm | 28.1 mm | 152 mm | 570 mm | 27.9 mm |

15.5T8-6U/COR/24-830/MF20/G 10/1

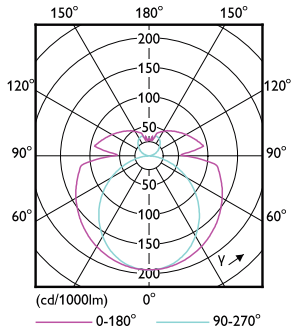
Photometric data



15-5W 2G13

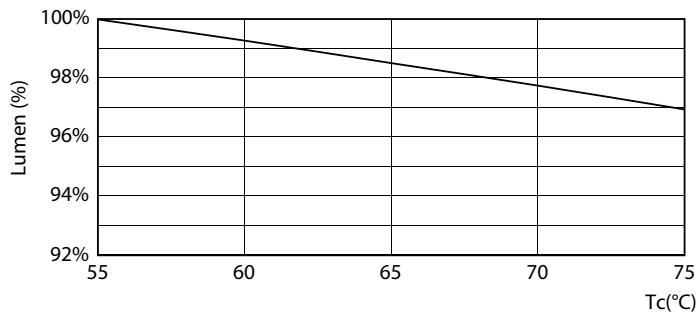
15-5W 2G13 830 3000K

Photometric data

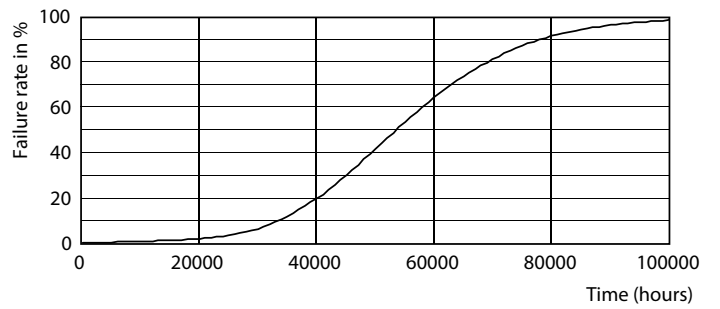


15-5W 2G13 830 3000K

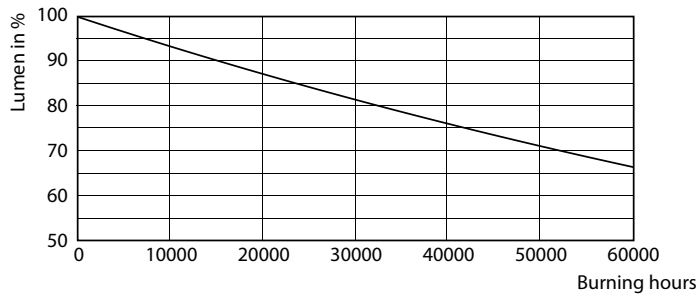
Lifetime



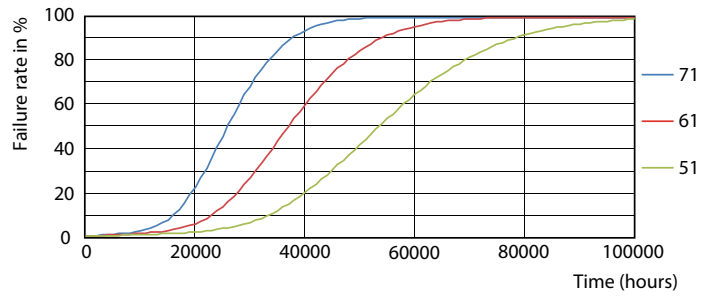
15-5W 2G13



8.5W G13



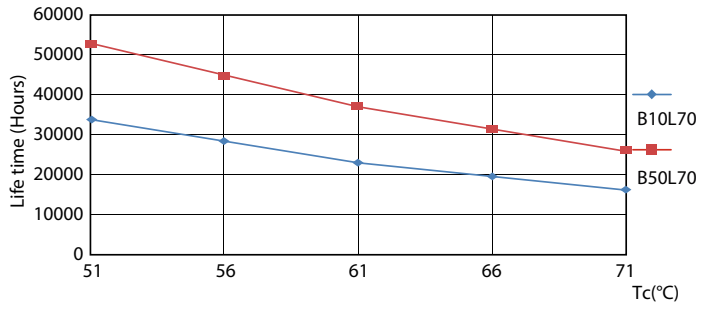
8.5W G13



15-5W 2G13

T8

Lifetime



15-5W 2G13

