



PL-L

16.5PL-L/COR/22-840/IF23/P/4P/DIM 10/1

Philips InstantFit LED lamps make the transition to LED from CFL lamps as simple as replacing a lamp. With a wide array of color temperatures, the InstantFit LED lamps can quickly and effectively replace compact fluorescent lamps.

Product data

| General information | |
|------------------------|--------------|
| Cap-Base | 2G11 [2G11] |
| EU RoHS compliant | Yes |
| Nominal Lifetime (Nom) | 50000 h |
| Switching Cycle | 50000X |

| Light technical | |
|---------------------------------------|---------------------|
| Color Code | 840 [CCT of 4000K] |
| Beam Angle (Nom) | 160 ° |
| Luminous Flux (Nom) | 2300 lm |
| Color Designation | Cool White (CW) |
| Correlated Color Temperature (Nom) | 4000 K |
| Luminous Efficacy (rated) (Nom) | 139.00 lm/W |
| Color Consistency | <6 |
| Color Rendering Index (Nom) | 82 |
| LLMF At End Of Nominal Lifetime (Nom) | 70 % |

| Operating and electrical | |
|---------------------------------|-----------------|
| Input Frequency | 40000-160000 Hz |
| Power (Nom) | 16.5 W |
| Lamp Current (Max) | 400 mA |
| Lamp Current (Min) | 200 mA |
| Starting Time (Nom) | 0.5 s |
| Warm Up Time to 60% Light (Nom) | 0.5 s |

| UL Type | |
|--------------------|---------------------------|
| UL Type | Type A - works on ballast |
| Power Factor (Nom) | 0.9 |
| Voltage (Nom) | 70-110 V |

| Temperature | |
|----------------------|--------|
| T-Ambient (Max) | 45 °C |
| T-Ambient (Min) | -20 °C |
| T-Storage (Max) | 65 °C |
| T-Storage (Min) | -40 °C |
| T-Case Maximum (Nom) | 75 °C |

| Controls and dimming | |
|----------------------|----|
| Dimmable | No |

| Mechanical and housing | |
|------------------------|--------------------|
| Product Length | 580 mm |
| Bulb Shape | Tube, single-ended |

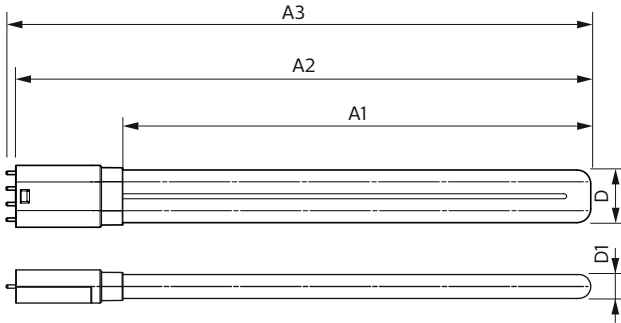
| Approval and application | |
|-------------------------------|---|
| Energy Saving Product | Yes |
| Approval Marks | UL certificate RoHS compliance DLC compliance |
| Energy Consumption kWh/1000 h | - kWh |

PL-L

| | |
|-----------------------|--|
| Energy Certifications | DLC Standard |
| Product data | |
| Order product name | 16.5PL-L/COR/22-840/IF23/P/4P/DIM 10/1 |
| EAN/UPC - Product | 046677532918 |
| Order code | 929001893704 |

| | |
|---------------------------------|--------------|
| Numerator - Quantity Per Pack | 1 |
| Numerator - Packs per outer box | 10 |
| Material Nr. (12NC) | 929001893704 |
| Net Weight (Piece) | 0.170 kg |

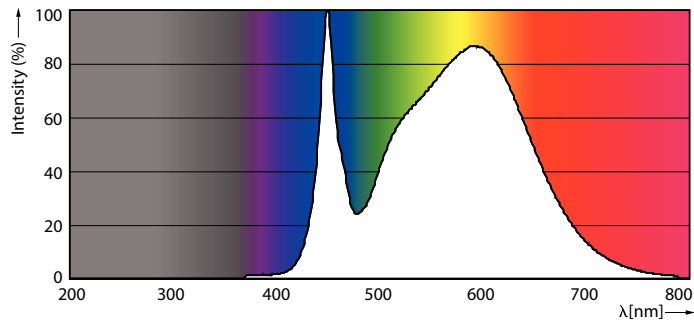
Dimensional drawing



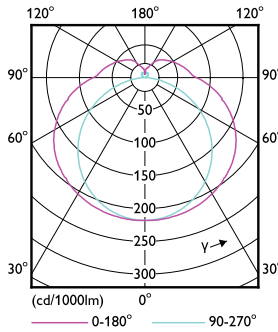
16.5PL-L/COR/22-840/IF23/P/4P/DIM 10/1

| Product | D | D1 | A1 | A2 | A3 |
|--|---------|-------|--------|--------|----------|
| 16.5PL-L/COR/22-840/IF23/P/4P/DIM 10/1 | 40.6 mm | 20 mm | 501 mm | 564 mm | 570.6 mm |

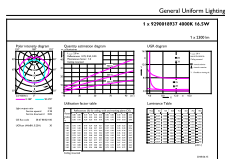
Photometric data



16-5W 2G11



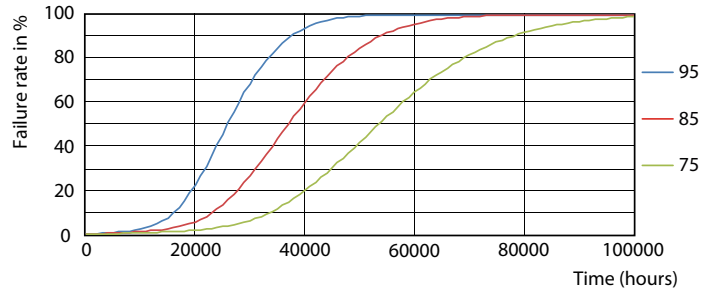
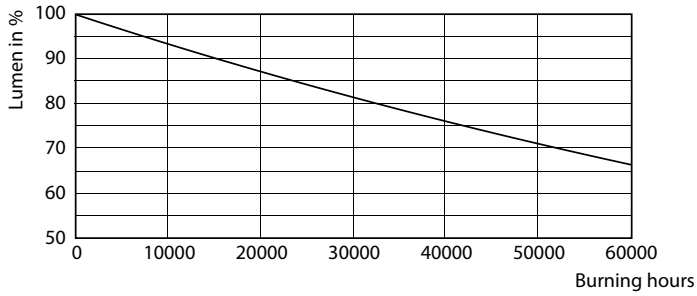
16-5W 2G11 830 3000K



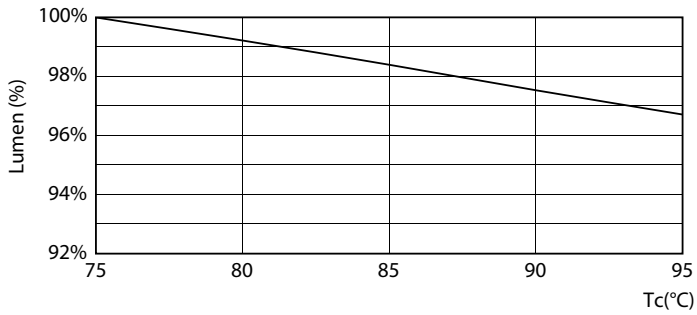
General Uniform Lighting

16-5W 2G11 840 4000K

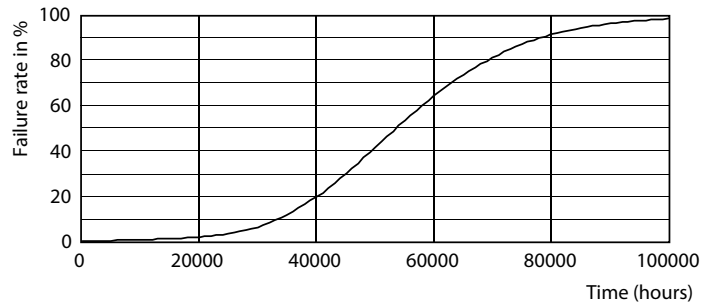
Lifetime



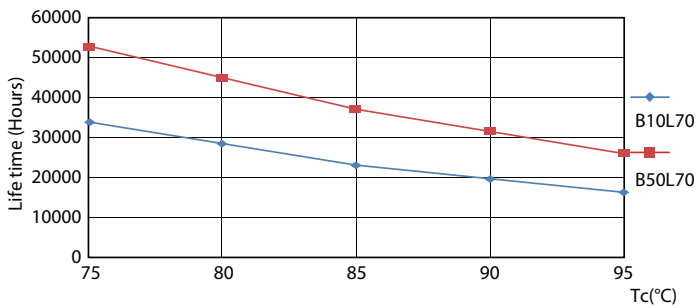
16-5W 2G11



16-5W 2G11



16-5W 2G11



16-5W 2G11

16-5W 2G11

