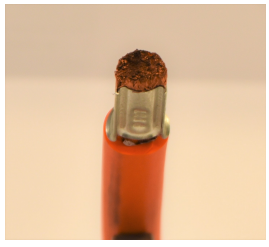


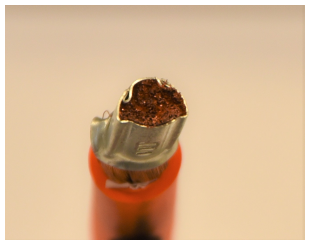
THIS COPY IS PROVIDED ON A RESTRICTED BASIS AND IS NOT TO BE USED IN ANY WAY DETRIMENTAL TO THE INTERESTS OF PANDUIT CORP.

NOTES, UNLESS OTHERWISE SPECIFIED:

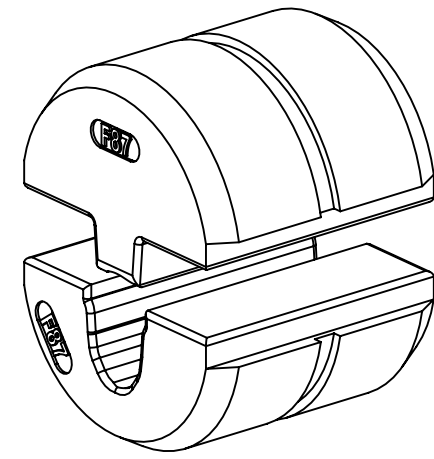
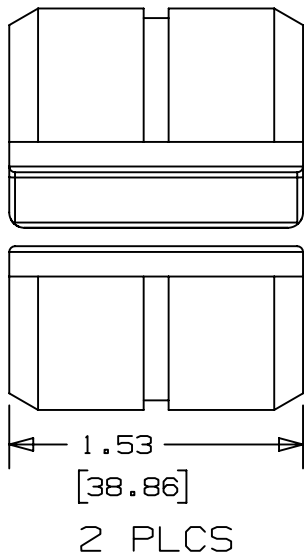
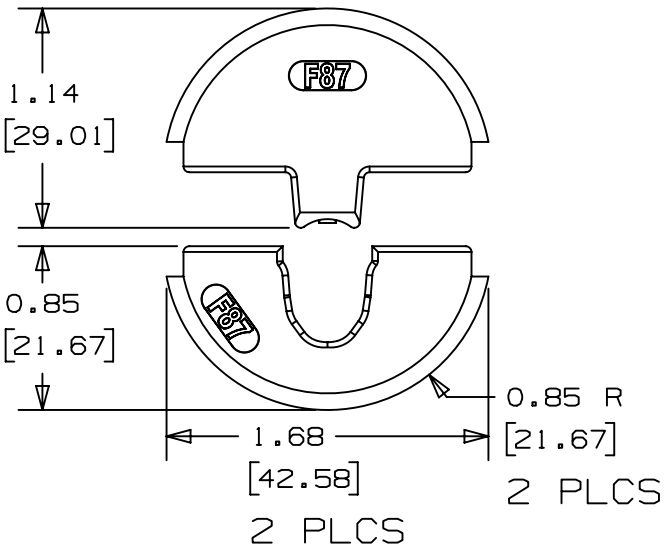
1. DIMENSIONS IN BRACKETS ARE IN METRIC.
2. RECOMMENDED TOOL: CT-3001/ST SERIES
3. COMPATIBLE TOOLS: CT-3001/CCP SERIES, CT-930LPCH (A)
4. WIRE SIZE: 1 AWG, 1/0
5. CRIMPS: F87 FERRULES - ALL SIZES
6. DIE HALVES ARE HEAT TREATED TO Rc 32-35
7. DIE HALVES ARE NICKLON PLATED FOR LUBRICITY/DURABILITY
8. DIE HALVES AND PLATING ARE ROHS COMPLIANT.
9. F87-18 FERRULES CRIMPED ON 1 AWG WIRE MUST BE DOUBLE CRIMPED TO ACHIEVE UL LISTED/CSA CERTIFIED TERMINATIONS.
 - 1ST CRIMP: STANDARD CRIMP, FERRULE FUNNEL AGAINST DIE SET, CABLE INSULATION AGAINST FUNNEL.
 - 2ND CRIMP: REMOVE CRIMPED FERRULE, ROTATE 180° AND RE-INSERT. RECRIMP FERRULE.



SINGLE CRIMP (FIRST CRIMP)



DOUBLE CRIMP (SECOND CRIMP)



REV	DATE	BY	CHK	APR	DESCRIPTION	ECN
02	11-2-17	BJPU	JEH	JADE	REMOVED CT-2931/ST AND CT-920CH TOOLS, ADDED CT-3001/CCP (A)	017591
01	08-28-17	BJPU	JEH	JADE	OFFICIAL RELEASE OF CD-920-F87 CUSTOMER DRAWING ADDED NOTE # 9	013588
00	03-30-17	BJPU	JEH	JADE	RELEASED	---

INSTALLATION INSTRUCTION NUMBER PA28870A01		N/A	
TITLE CD-920-F87 CUSTOMER DRAWING			
CUSTOMER DRAWING			
ITEM REVISION NAME R28874AA/02		PANDUIT	
DATASET FILE NAME R28874AA_DS.TD28874A01/02			
UNLESS OTHERWISE SPECIFIED, DIMENSIONAL TOLERANCES ARE: IN [mm]		MATERIAL: 4140 STEEL / RC 32-35	
.x ± .1 [2.54] .xxx ± .005 [.127]		DRAWING NUMBER: TD28874A01	
.xx ± .01 [.25] ANGLES ± 5 °			
THIRD ANGLE PROJECTION		SHT 1 OF 1	
DRAWN BY BJPU	DATE 03/30/17	CHK JADE	SCALE 1:1
		SIZE A	