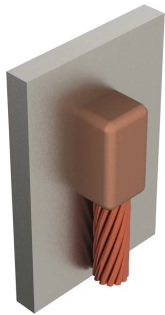


CABLE TO STEEL, VB, STEEL PIPE OR FLAT SURFACE, 1/0 CONCENTRIC, 24" MIN PIPE

CATALOG NUMBER

VBC2C



nVent ERICO Cadweld graphite molds are designed and engineered for thousands of connection styles and conductor combinations.

CERTIFICATIONS



FEATURES

Forms a permanent, low resistance connection

Provides a molecular bond

nVent ERICO Cadweld Exothermic Connections are rated with the same current capacity as the conductor

Portable installation equipment with no external source of power required

Installers can be easily trained to make nVent ERICO Cadweld Exothermic Connections

Connections can be visually inspected

PRODUCT ATTRIBUTES

Mold Family: VB

Connects To: Steel Pipe or Flat Surface

Conductor Size: 1/0 Concentric

Conductor Outer Diameter, Nominal: 0.37

Pipe Size: 24" Min

Outer Diameter (OD): 24" Min

Kit: No

Mold Split: Vertical

Split Crucible: No

Wear Plates: No

Mold Only: No

Welding Material: 115 or 115PLUSF20, Sold Separately

Handle Clamp: L160 or B396, Sold Separately

Price Key: C

Ease of Use: Easy

ADDITIONAL PRODUCT DETAILS

For applications such as computer room, tunnel or other low-ventilation areas, specify a smokeless nVent ERICO Cadweld Exolon mold. Add an XL prefix to the standard mold part number when ordering (for example, a TAC2Q2Q becomes XLTAC2Q2Q). Similarly, nVent ERICO Cadweld Exolon welding material is also designated by the XL prefix (for example, 150 becomes XL150).

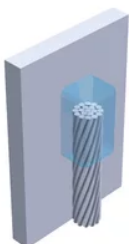
A gap between conductors may be required. See mold tag for more information.

A test weld should be made to check for the possibility of burn through on thin sections and to determine detrimental metallurgical effects.

W-XX-X-XX-LH-XX-L-M		
W*	Wear Plates	Reduce mechanical abrasion of molds at cable entry points
XX	Mold Family	
X	Price Key	
XX	Conductor Code	
LH	Weld End	LH = Weld on left end of conductor RH = Weld on right end of conductor (For Mold Families HG, VL, and VN only)
XX	Pipe Size	
L*	Split Crucible	Crucible section is split on molds designed with horizontal opening for easier cleaning
M*	Mold Only	

* Empty if none

DIAGRAMS



WARNING

nVent products shall be installed and used only as indicated in nVent's product instruction sheets and training materials. Instruction sheets are available at www.nvent.com and from your nVent customer service representative. Improper installation, misuse, misapplication or other failure to completely follow nVent's instructions and warnings may cause product malfunction, property damage, serious bodily injury and death and/or void your warranty.

North America

+1.800.753.9221

Option 1 – Customer Care

Option 2 – Technical Support

Europe

Netherlands:

+31 800-0200135

France:

+33 800 901 793

Europe

Germany:

800 1890272

Other Countries:

+31 13 5835404

APAC

Shanghai:

+ 86 21 2412 1618/19

Sydney:

+61 2 9751 8500



Our powerful portfolio of brands:
nVent.com CADDY ERICO HOFFMAN RAYCHEM SCHROFF
TRACER