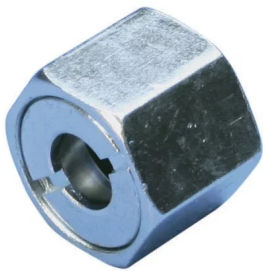




NVENT CADDY ROD LOCK NUT, 3/8" ROD

CATALOG NUMBER

CRLN37EG



FEATURES

Easy "push-to-install" design allows installers to simply push the threaded rod through the mounting hole, instantly holding it in position

Fast installation onto long threaded rods - push the nut in place instead of threading it up the rod

Excellent alignment and easy fine adjustment by spinning the nut

Extremely useful in tight spaces where wrenches are difficult to use

PRODUCT ATTRIBUTES

Material: Steel

Finish: Electrogalvanized

Rod Size (RS): 3/8"

Height (H): 0.8"

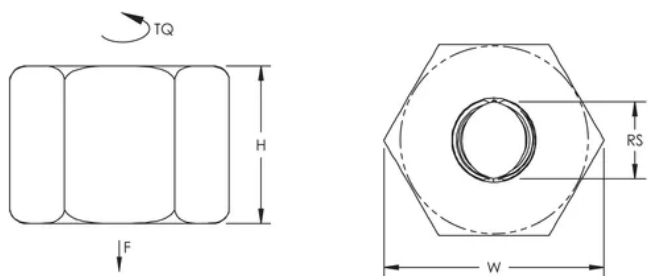
Width (W): 1.1"

Wrench Size: 15/16"

Torque (TQ): 5 ft·lbf

Static Load (F): 1350lb

DIAGRAMS



WARNING

nVent products shall be installed and used only as indicated in nVent's product instruction sheets and training materials. Instruction sheets are available at www.nvent.com and from your nVent customer service representative. Improper installation, misuse, misapplication or other failure to completely follow nVent's instructions and warnings may cause product malfunction, property damage, serious bodily injury and death and/or void your warranty.

North America

+1.800.753.9221

Option 1 – Customer Care

Option 2 – Technical Support

Europe

Netherlands:

+31 800-0200135

France:

+33 800 901 793

Europe

Germany:

800 1890272

Other Countries:

+31 13 5835404

APAC

Shanghai:

+ 86 21 2412 1618/19

Sydney:

+61 2 9751 8500



Our powerful portfolio of brands:
nVent.com **CADDY ERICO HOFFMAN RAYCHEM SCHROFF**
TRACER

© 2024 nVent. All nVent marks and logos are owned or licensed by nVent Services GmbH or its affiliates. All other trademarks are the property of their respective owners.

nVent reserves the right to change specifications without notice.