



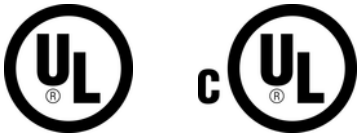
UNIVERSAL RESTRAINT CLIP, STEEL, EG, #12, #18, #36 BRACE, 7/16" HOLE

CATALOG NUMBER

CSBURC38



CERTIFICATIONS



FEATURES

Attaches cable brace to structure

Meets CEN/TS 17551:2021 requirements for Seismic Sway Bracing

PRODUCT ATTRIBUTES

Material: Steel

Finish: Electrogalvanized

Brace Size: #12;#18;#36

Hole Size: 7/16"

Thickness: 0.168"

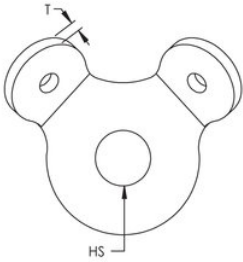
UL Listed Load: 771 lb

ADDITIONAL PRODUCT DETAILS

Brace member is not included.

Mount to the structure using the center hole. Loop cable through the holes in the bent tabs and swage in place.

DIAGRAMS



UL Loads		
Part Number	Brace Member	Load Rating
CSBURC38	CSB12CBL	418 lb
	CSB18CBL	772 lb
	CSB36CBL	1909 lb
CSBURC12	CSB12CBL	418 lb
	CSB18CBL	772 lb
	CSB36CBL	1909 lb
CSBURC58	CSB12CBL	418 lb
	CSB18CBL	772 lb
	CSB36CBL	1909 lb
CSBURC34	CSB12CBL	418 lb
	CSB18CBL	772 lb
	CSB36CBL	1909 lb
CSBURC78	CSB12CBL	418 lb
	CSB18CBL	772 lb
	CSB36CBL	1909 lb

WARNING

nVent products shall be installed and used only as indicated in nVent's product instruction sheets and training materials. Instruction sheets are available at www.nvent.com and from your nVent customer service representative. Improper installation, misuse, misapplication or other failure to completely follow nVent's instructions and warnings may cause product malfunction, property damage, serious bodily injury and death and/or void your warranty.

North America

+1.800.753.9221

Option 1 – Customer Care

Option 2 – Technical Support

Europe

Netherlands:

+31 800-0200135

France:

+33 800 901 793

Europe

Germany:

800 1890272

Other Countries:

+31 13 5835404

APAC

Shanghai:

+ 86 21 2412 1618/19

Sydney:

+61 2 9751 8500



Our powerful portfolio of brands:
nVent.com CADDY ERICO HOFFMAN RAYCHEM SCHROFF TRACER

© 2022 nVent. All nVent marks and logos are owned or licensed by nVent Services GmbH or its affiliates. All other trademarks are the property of their respective owners.

nVent reserves the right to change specifications without notice.