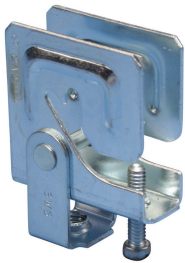




# PHSW MULTI-PURPOSE PURLIN CLAMP WITH SWIVEL, 1/4" ROD, 1/4" MAX FLANGE

## CATALOG NUMBER

**PHSW4**



## CERTIFICATIONS



## FEATURES

Attachment to bottom of purlins and beams to support threaded rod

Swivel feature option for attachment to purlins under sloped roofs

## PRODUCT ATTRIBUTES

Material: Steel

Finish: Electrogalvanized

Rod Size: 1/4"

B: 3/4" Min

Torque: 30 in lb

Static Load 1: 200 lb

Static Load 2: 160 lb

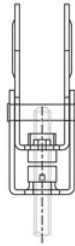
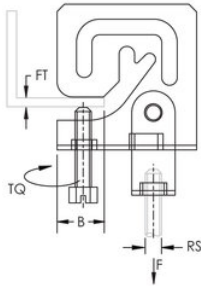
Nut Included: No

## ADDITIONAL PRODUCT DETAILS

A jam nut is required for fire protection applications.

Refer to Static Load 1 when attaching to C and Z purlins. Refer to Static Load 2 when attaching to a flat flange.

## DIAGRAMS



## WARNING

nVent products shall be installed and used only as indicated in nVent's product instruction sheets and training materials. Instruction sheets are available at [www.nvent.com](http://www.nvent.com) and from your nVent customer service representative. Improper installation, misuse, misapplication or other failure to completely follow nVent's instructions and warnings may cause product malfunction, property damage, serious bodily injury and death and/or void your warranty.

### North America

+1.800.753.9221

Option 1 – Customer Care

Option 2 – Technical Support

### Europe

Netherlands:

+31 800-0200135

France:

+33 800 901 793

### Europe

Germany:

800 1890272

Other Countries:

+31 13 5835404

### APAC

Shanghai:

+ 86 21 2412 1618/19

Sydney:

+61 2 9751 8500



Our powerful portfolio of brands:

**nVent.com** CADDY ERICO HOFFMAN RAYCHEM SCHROFF TRACER

© 2022 nVent. All nVent marks and logos are owned or licensed by nVent Services GmbH or its affiliates. All other trademarks are the property of their respective owners.

nVent reserves the right to change specifications without notice.