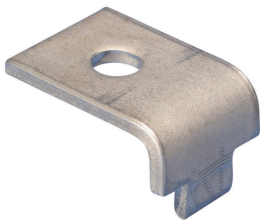




STRUT BEAM CLIP, STEEL, EG, 0.5" FLANGE, 0.563" HOLE

CATALOG NUMBER

BC200000EG



FEATURES

Beam Clip for clamping the open side of strut to a beam

Suitable for all strut channels

Requires installation in pairs

Structural attachment to beams to support nVent CADDY Eristrut

FM® Specification Tested

PRODUCT ATTRIBUTES

Material: Steel

Finish: Electrogalvanized

Flange Thickness: 1/2"

Hole Size: 9/16"

Length: 2.730"

Thickness: 1/4"

Width: 1.600"

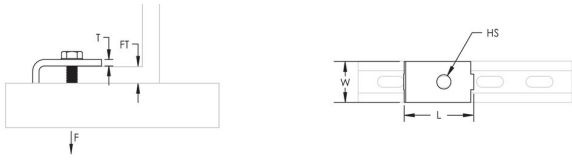
Static Load: 460 lb

Screw Included: No

ADDITIONAL PRODUCT DETAILS

Indicated loads are based on installation with 1/2" (M12) hardware and strut channel type A.

DIAGRAMS



WARNING

nVent products shall be installed and used only as indicated in nVent's product instruction sheets and training materials. Instruction sheets are available at www.nvent.com and from your nVent customer service representative. Improper installation, misuse, misapplication or other failure to completely follow nVent's instructions and warnings may cause product malfunction, property damage, serious bodily injury and death and/or void your warranty.

North America

+1.800.753.9221

Option 1 – Customer Care

Option 2 – Technical Support

Europe

Netherlands:

+31 800-0200135

France:

+33 800 901 793

Europe

Germany:

800 1890272

Other Countries:

+31 13 5835404

APAC

Shanghai:

+ 86 21 2412 1618/19

Sydney:

+61 2 9751 8500



Our powerful portfolio of brands:

nVent.com CADDY ERICO HOFFMAN RAYCHEM SCHROFF TRACER

© 2022 nVent. All nVent marks and logos are owned or licensed by nVent Services GmbH or its affiliates. All other trademarks are the property of their respective owners.

nVent reserves the right to change specifications without notice.