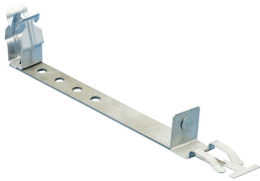




T-GRID RIVET TO HANGER ASSEMBLY, 1/2' EMT

CATALOG NUMBER

5288P



FEATURES

Supports boxes and conduit above acoustical T-Grid

Allows attachment of conduit clips with thread impressions at required height

No tools required for installation

PRODUCT ATTRIBUTES

Material: Spring Steel

Finish: nVent CADDY Armour

EMT Conduit Size: 1/2'

Length: 4 1/4" – 7 1/4"

ADDITIONAL PRODUCT DETAILS

Additional support wire required per NEC® 300.11.

No load rating, for positioning only.

Comes with P-series with THD impression screw assembled to top hole location (adjustable).

WARNING

nVent products shall be installed and used only as indicated in nVent's product instruction sheets and training materials. Instruction sheets are available at www.nvent.com and from your nVent customer service representative. Improper installation, misuse, misapplication or other failure to completely follow nVent's instructions and warnings may cause product malfunction, property damage, serious bodily injury and death and/or void your warranty.

North America

+1.800.753.9221

Option 1 – Customer Care

Option 2 – Technical Support

Europe

Netherlands:

+31 800-0200135

France:

+33 800 901 793

Europe

Germany:

800 1890272

Other Countries:

+31 13 5835404

APAC

Shanghai:

+ 86 21 2412 1618/19

Sydney:

+61 2 9751 8500



Our powerful portfolio of brands:

nVent.com **CADDY ERICO HOFFMAN RAYCHEM SCHROFF TRACER**

© 2022 nVent. All nVent marks and logos are owned or licensed by nVent Services GmbH or its affiliates. All other trademarks are the property of their respective owners.

nVent reserves the right to change specifications without notice.