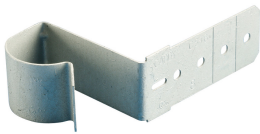




CABLE/CONDUIT TO STUD ATTACHMENT, 1" EMT, 2 1/8" BOX DEPTH

CATALOG NUMBER

CS16



CERTIFICATIONS



FEATURES

Accommodates EMT conduit and MC/AC cable

Easily locate the fastener on the stud, keeping your conduit in line with box knock out and H-series brackets

For wood or metal stud

Eliminates offset bending of conduit

Compliant with NEC® Article 358.30(A), which requires conduit support within 36" of an electrical box

Compliant with CEC Rule 12-1404, which requires conduit support within 1 m of an electrical box

Compliant with CEC Rule 12-618, which requires support of armoured cable within 300 mm (12") of an electrical box

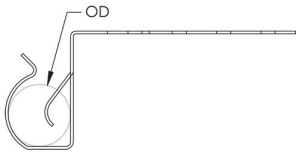
PRODUCT ATTRIBUTES

Material: Spring Steel

Finish: nVent CADDY Armour

EMT Conduit Size: 1"

DIAGRAMS



WARNING

nVent products shall be installed and used only as indicated in nVent's product instruction sheets and training materials. Instruction sheets are available at www.nvent.com and from your nVent customer service representative. Improper installation, misuse, misapplication or other failure to completely follow nVent's instructions and warnings may cause product malfunction, property damage, serious bodily injury and death and/or void your warranty.

North America

+1.800.753.9221

Option 1 – Customer Care

Option 2 – Technical Support

Europe

Netherlands:

+31 800-0200135

France:

+33 800 901 793

Europe

Germany:

800 1890272

Other Countries:

+31 13 5835404

APAC

Shanghai:

+ 86 21 2412 1618/19

Sydney:

+61 2 9751 8500



Our powerful portfolio of brands:

nVent.com **CADDY ERICO HOFFMAN RAYCHEM SCHROFF TRACER**