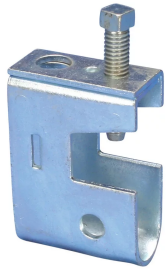




## BC10 MULTI-FUNCTION BEAM CLAMP, 3/8", 1/2" ROD, 3/4" MAX FLANGE

### CATALOG NUMBER

**BC100000EG**



### FEATURES

Structural attachment to beams to support threaded rod

### PRODUCT ATTRIBUTES

Material: Steel

Finish: Electrogalvanized

Rod Size (RS): 3/8";1/2"

Flange Thickness (FT): 3/4" Max

B: 1"

Screw Diameter (Sc): 3/8"

Torque (TQ): 5 ft·lbf

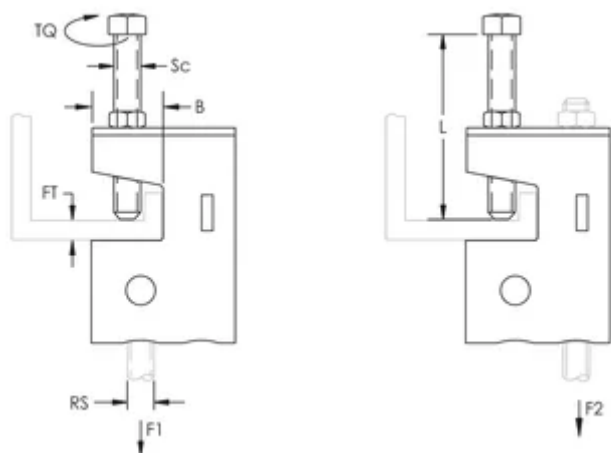
Static Load 1 (F1): 500lb

Static Load 2 (F2): 300lb

### ADDITIONAL PRODUCT DETAILS

Setscrew must be tightened and torqued onto the sloped side of the I-beam.

## DIAGRAMS



## WARNING

nVent products shall be installed and used only as indicated in nVent's product instruction sheets and training materials. Instruction sheets are available at [www.nvent.com](http://www.nvent.com) and from your nVent customer service representative. Improper installation, misuse, misapplication or other failure to completely follow nVent's instructions and warnings may cause product malfunction, property damage, serious bodily injury and death and/or void your warranty.

### North America

+1.800.753.9221

Option 1 – Customer Care

Option 2 – Technical Support

### Europe

Netherlands:

+31 800-0200135

France:

+33 800 901 793

### Europe

Germany:

800 1890272

Other Countries:

+31 13 5835404

### APAC

Shanghai:

+ 86 21 2412 1618/19

Sydney:

+61 2 9751 8500



Our powerful portfolio of brands:  
nVent.com **CADDY ERICO HOFFMAN RAYCHEM SCHROFF**  
**TRACER**