

FEATURES & SPECIFICATIONS

INTENDED USE

Provides an LED lighting platform to deliver general or task lighting for residential and light commercial applications. Light engine delivers long life and excellent color to ensure a quality, low-maintenance light installation. Ideal for use in bathrooms, lavatories, hallways, corridors, stairways, utility areas and more.

CONSTRUCTION

The Contemporary Cylinder is constructed of an acrylic diffuser with brushed nickel housing. The included canopy/junction box cover is removable for a more low-profile look (2' only). The white acrylic diffuser provides even illumination and softens the appearance of the LEDs for improved aesthetics.

OPTICS

2' produces 1300 lumens and 3' produces 1900 lumens at 3000K with 50,000 hours of life.

Extruded acrylic diffuser is of highly transmissive material to minimize LED image and provides high-angle brightness control.

ELECTRICAL

Long-life LEDs, coupled with a multivolt driver, provide extended service life. Standard input = 18 watts, (2'); 26 watts, (3'). Fixture is rated to deliver L70 performance at 50,000 hours and operates at 120-277 volts.

Use with non-dimmable switches only.

LISTINGS

UL Listed to US and Canadian safety standards. Listed for damp locations. † ENERGY STAR® certified.

WARRANTY — 5-year limited warranty. Complete warranty terms located at:

www.acuitybrands.com/support/warranty/terms-and-conditions

NOTE: Actual performance may differ as a result of end-user environment and application.

All values are design or typical values, measured under laboratory conditions at 25 °C.

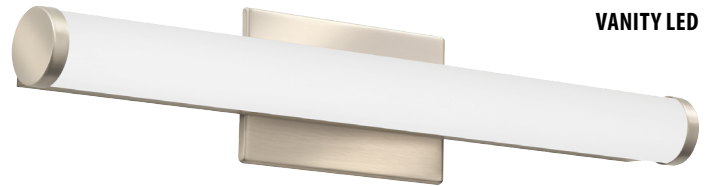
Specifications subject to change without notice.

Catalog Number
Notes
Type

Decorative Indoor

Contemporary Cylinder Vanity

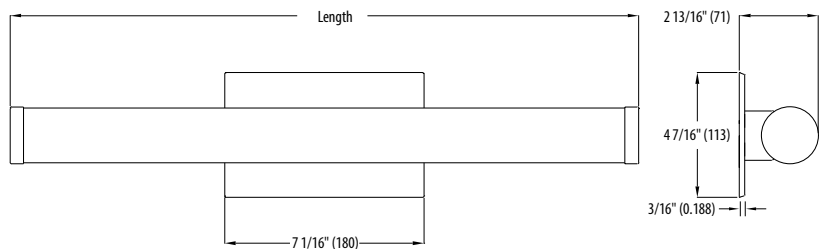
VANITY LED



ADA
U.S. PATENT PENDING

SPECIFICATIONS	2FT	3FT
Length:	22-3/8 (568)	34-3/16 (868)
Weight:	2.1 (.95)	2.5 (1.13)
3000K Lumens (LPW)	1391 (77)	2050 (78)
4000K Lumens (LPW)	1467 (81)	2062 (79)

All dimensions are inches (millimeters) unless otherwise indicated.
Weights are pounds (kilograms).



ORDERING INFORMATION For shortest lead times, configure product using **bolded options**.

Example: FMVCL 36IN MVOLT 30K 90CRI BN

Series	Length	Voltage	Color temperature	CRI	Finish
FMVCL Contemporary Cylinder Vanity	24IN 2' Nominal 36IN 3' Nominal	MVOLT MVOLT (120V-277V)	30K † 3000 K	90CRI >90	BN Brushed Nickel

† These configurations are energy star rated.

LED Vanity Contemporary Cylinder

LIGHTING FACTS

Lithonia Lighting

LED lighting facts®
A Program of the U.S. DOE

Light Output (Lumens)	1391
Watts	17.68
Lumens per Watt (Efficacy)	78.68

Color Accuracy Color Rendering Index (CRI)	94
---	----

Light Color
Correlated Color Temperature (CCT) **3000 (Bright White)**

2700K 3000K 4500K 6500K

Warm White | Bright White | Daylight

All results are according to IESNA LM-79-2008: Approved Method for the Electrical and Photometric Testing of Solid-State Lighting. The U.S. Department of Energy (DOE) verifies product test data and results.

Visit www.lightingfacts.com for the Label Reference Guide.

Registration Number: NJSM-DN5C21 (2/10/2016)
Model Number: FMVCCCL 24IN 30K 90CRI
Type: Luminaire - Industrial

Lithonia Lighting

LED lighting facts®
A Program of the U.S. DOE

Light Output (Lumens)	2050
Watts	25.27
Lumens per Watt (Efficacy)	81.12

Color Accuracy Color Rendering Index (CRI)	94
---	----

Light Color
Correlated Color Temperature (CCT) **3000 (Bright White)**

2700K 3000K 4500K 6500K

Warm White | Bright White | Daylight

All results are according to IESNA LM-79-2008: Approved Method for the Electrical and Photometric Testing of Solid-State Lighting. The U.S. Department of Energy (DOE) verifies product test data and results.

Visit www.lightingfacts.com for the Label Reference Guide.

Registration Number: NJSM-PUZON8 (2/10/2016)
Model Number: FMVCCCL 36IN 30K 90CRI
Type: Luminaire - Industrial