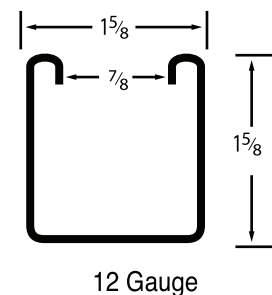
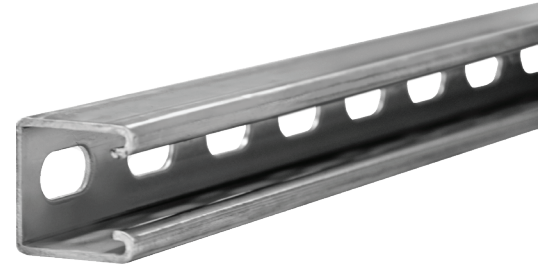


STAINLESS STEEL 1⁵/₈" X 1⁵/₈" SLOTTED STRUT

Features:

- Manufactured in both type 304 and 316 stainless to meet any stringent sanitary condition
- Polished to a "brite" easily maintainable finish that is modern, attractive, easy to clean, and that also enhances the surface's resistance to pitting and bacterial corrosion
- Calbrite stainless steel strut functions in exactly the same way as any other metallic strut
- Channels provided by Calbrite are available in 12 different basic sizes which are subjected to further variation in gauge and depth



Certifications and Compliances:

- UL 5B Listed
- For installation in accordance with Article 384 of ANSI/NFPA 70, National Electrical Code (NEC)
- ASTM A240, ASTM A1011 SS

Applications:

The Calbrite system of metal framing is based on the use of a continuous slotted channel, and a series of brackets and fittings, which can be fastened to it at any point. With Calbrite channel and components, racks, supports for conduit, wiring, electrical equipment, machine frames, and a limitless variety of structures can be built rapidly, simply and economically.

Industries Commonly Served:

- Food & Beverage Production
- Marine & Coastal Facilities
- Chemical Plants
- Water & Wastewater Treatment
- Pharmaceuticals & Cosmetics
- Refining & Extraction Sites
- Petrochemical Operations
- Pulp & Paper Mills
- Along with other corrosive environments

Type 304 Part Number	Type 316 Part Number	Size (in)	Width of Hole (in)	Length of Hole (in)	Distance Between Holes (in)	Width of Lip (in)	Sectional Area (in ²)	Weight per L.F. (lb)
S45810ST58	S65810ST58	1 5/8 x 1 5/8	9/16	1 1/8	7/8	3/8	.559	1.65

All dimensions are for informational purposes only *Tolerances +/- 5%



For more info visit atkore.com/calbrite

